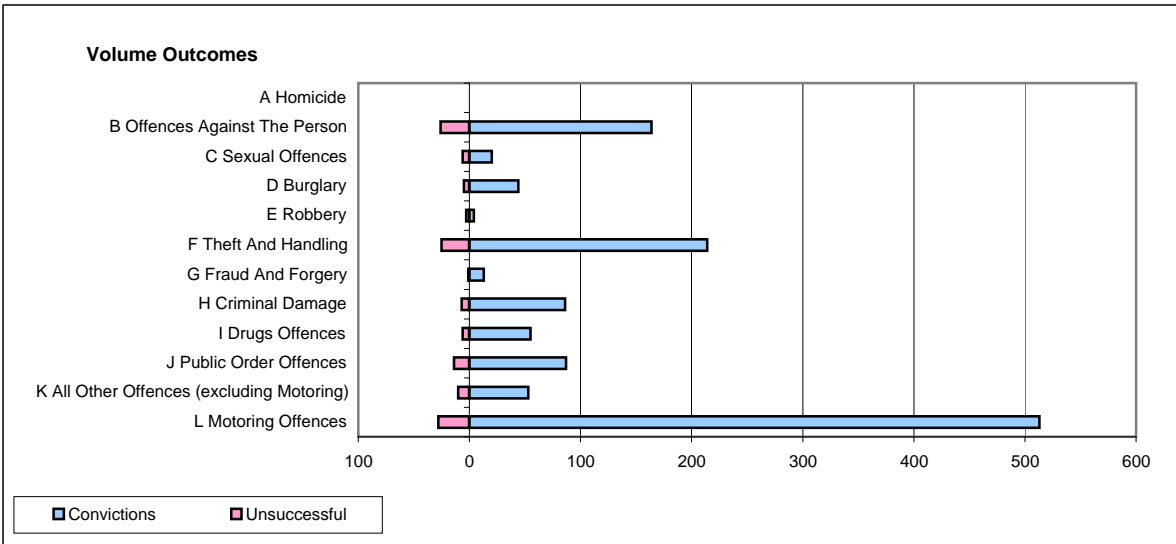
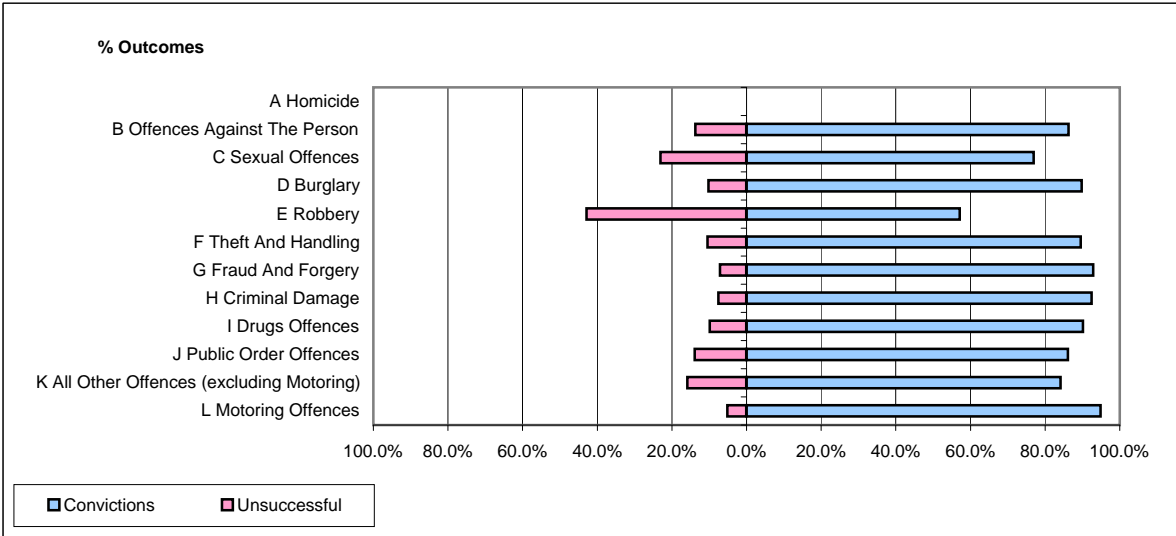


CPS OUTCOMES BY PRINCIPAL OFFENCE CATEGORY

December 2008

P34-Staffordshire



	Convictions		Unsuccessful	
	Number of Defendants	%	Number of Defendants	%
A Homicide	0	0	0	0
B Offences Against The Person	164	86.3%	26	13.7%
C Sexual Offences	20	76.9%	6	23.1%
D Burglary	44	89.8%	5	10.2%
E Robbery	4	57.1%	3	42.9%
F Theft And Handling	214	89.5%	25	10.5%
G Fraud And Forgery	13	92.9%	1	7.1%
H Criminal Damage	86	92.5%	7	7.5%
I Drugs Offences	55	90.2%	6	9.8%
J Public Order Offences	87	86.1%	14	13.9%
K All Other Offences (excluding Motoring)	53	84.1%	10	15.9%
L Motoring Offences	513	94.8%	28	5.2%
Admin Finalisations	0	0.0%	12	100.0%
TOTAL	1,253	89.8%	143	10.2%