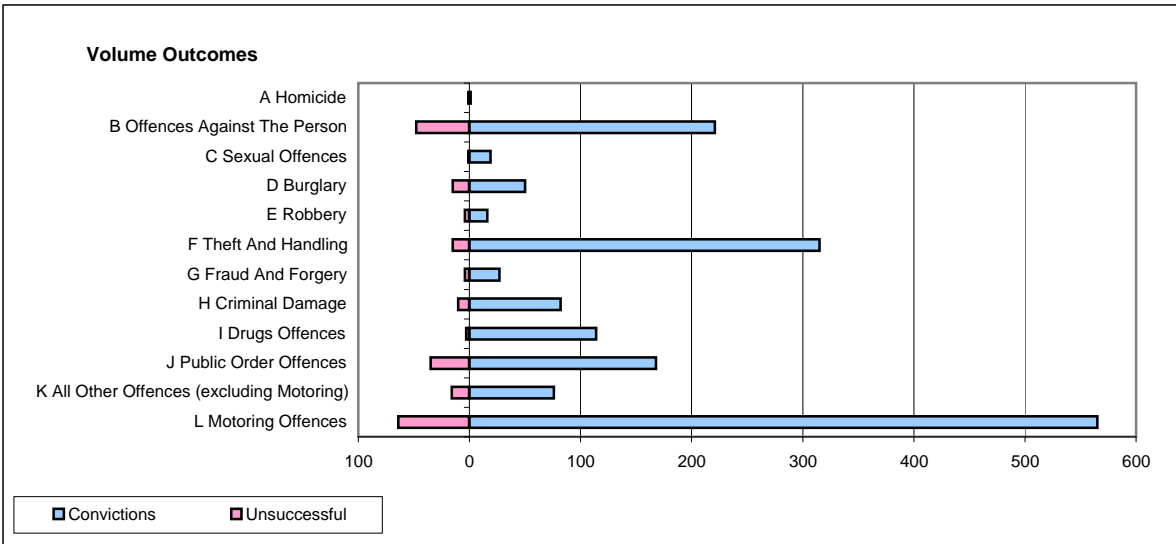
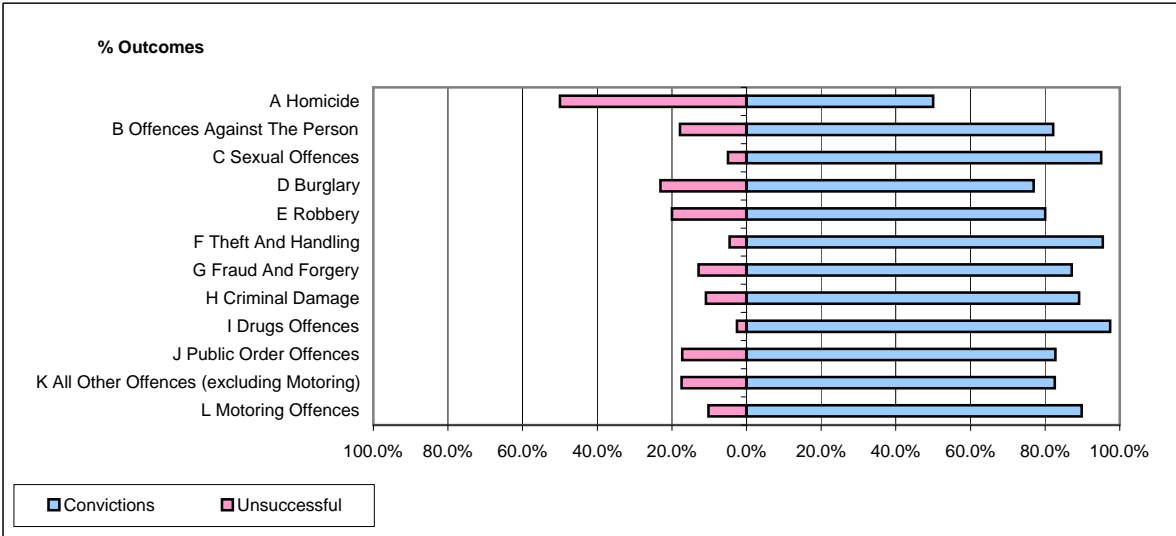


**CPS OUTCOMES BY PRINCIPAL OFFENCE CATEGORY**

**December 2008**

**P33-SouthYorkshire**



	Convictions		Unsuccessful	
	Number of Defendants	%	Number of Defendants	%
<b>A Homicide</b>	<b>1</b>	<b>50.0%</b>	<b>1</b>	<b>50.0%</b>
<b>B Offences Against The Person</b>	<b>221</b>	<b>82.2%</b>	<b>48</b>	<b>17.8%</b>
<b>C Sexual Offences</b>	<b>19</b>	<b>95.0%</b>	<b>1</b>	<b>5.0%</b>
<b>D Burglary</b>	<b>50</b>	<b>76.9%</b>	<b>15</b>	<b>23.1%</b>
<b>E Robbery</b>	<b>16</b>	<b>80.0%</b>	<b>4</b>	<b>20.0%</b>
<b>F Theft And Handling</b>	<b>315</b>	<b>95.5%</b>	<b>15</b>	<b>4.5%</b>
<b>G Fraud And Forgery</b>	<b>27</b>	<b>87.1%</b>	<b>4</b>	<b>12.9%</b>
<b>H Criminal Damage</b>	<b>82</b>	<b>89.1%</b>	<b>10</b>	<b>10.9%</b>
<b>I Drugs Offences</b>	<b>114</b>	<b>97.4%</b>	<b>3</b>	<b>2.6%</b>
<b>J Public Order Offences</b>	<b>168</b>	<b>82.8%</b>	<b>35</b>	<b>17.2%</b>
<b>K All Other Offences (excluding Motoring)</b>	<b>76</b>	<b>82.6%</b>	<b>16</b>	<b>17.4%</b>
<b>L Motoring Offences</b>	<b>565</b>	<b>89.8%</b>	<b>64</b>	<b>10.2%</b>
<b>Admin Finalisations</b>	<b>0</b>	<b>0.0%</b>	<b>13</b>	<b>100.0%</b>
<b>TOTAL</b>	<b>1,654</b>	<b>87.8%</b>	<b>229</b>	<b>12.2%</b>