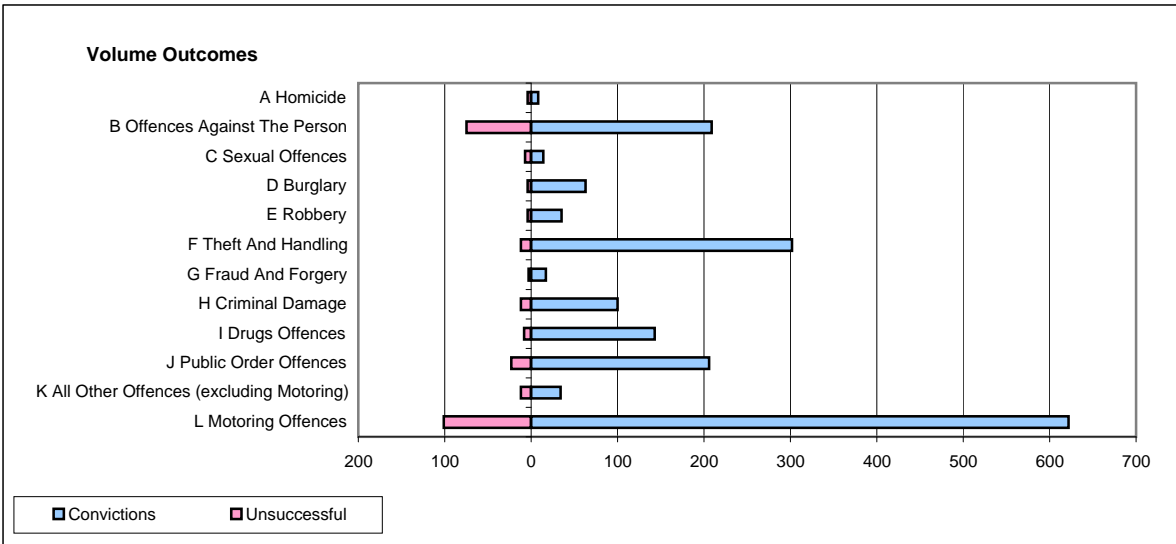
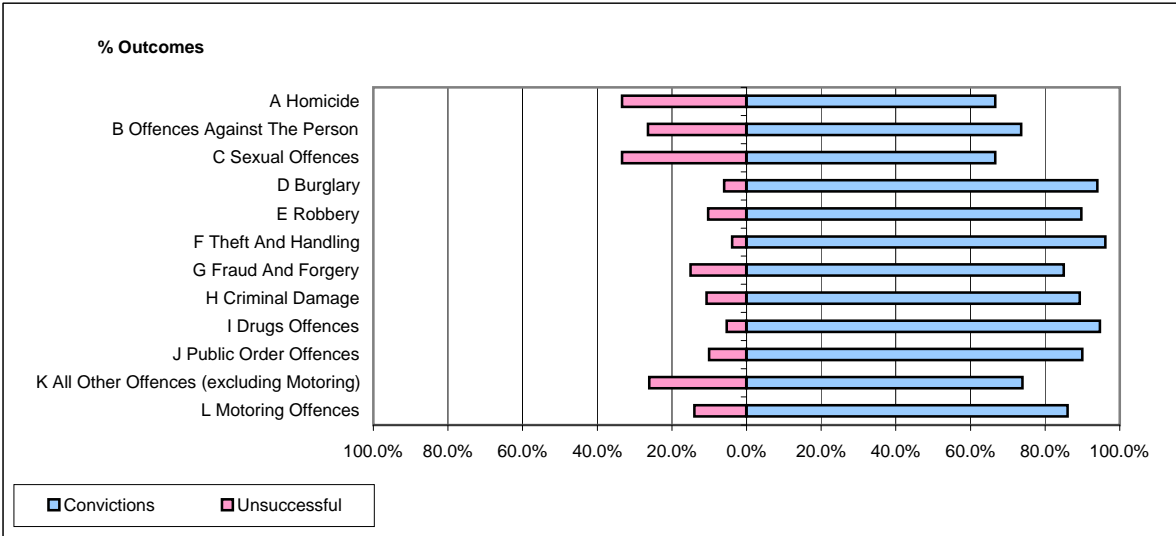


**CPS OUTCOMES BY PRINCIPAL OFFENCE CATEGORY**

**December 2008**

**P32-SouthWales**



	Convictions		Unsuccessful	
	Number of Defendants	%	Number of Defendants	%
<b>A Homicide</b>	<b>8</b>	<b>66.7%</b>	<b>4</b>	<b>33.3%</b>
<b>B Offences Against The Person</b>	<b>209</b>	<b>73.6%</b>	<b>75</b>	<b>26.4%</b>
<b>C Sexual Offences</b>	<b>14</b>	<b>66.7%</b>	<b>7</b>	<b>33.3%</b>
<b>D Burglary</b>	<b>63</b>	<b>94.0%</b>	<b>4</b>	<b>6.0%</b>
<b>E Robbery</b>	<b>35</b>	<b>89.7%</b>	<b>4</b>	<b>10.3%</b>
<b>F Theft And Handling</b>	<b>302</b>	<b>96.2%</b>	<b>12</b>	<b>3.8%</b>
<b>G Fraud And Forgery</b>	<b>17</b>	<b>85.0%</b>	<b>3</b>	<b>15.0%</b>
<b>H Criminal Damage</b>	<b>100</b>	<b>89.3%</b>	<b>12</b>	<b>10.7%</b>
<b>I Drugs Offences</b>	<b>143</b>	<b>94.7%</b>	<b>8</b>	<b>5.3%</b>
<b>J Public Order Offences</b>	<b>206</b>	<b>90.0%</b>	<b>23</b>	<b>10.0%</b>
<b>K All Other Offences (excluding Motoring)</b>	<b>34</b>	<b>73.9%</b>	<b>12</b>	<b>26.1%</b>
<b>L Motoring Offences</b>	<b>622</b>	<b>86.0%</b>	<b>101</b>	<b>14.0%</b>
<b>Admin Finalisations</b>	<b>0</b>	<b>0.0%</b>	<b>43</b>	<b>100.0%</b>
<b>TOTAL</b>	<b>1,753</b>	<b>85.1%</b>	<b>308</b>	<b>14.9%</b>