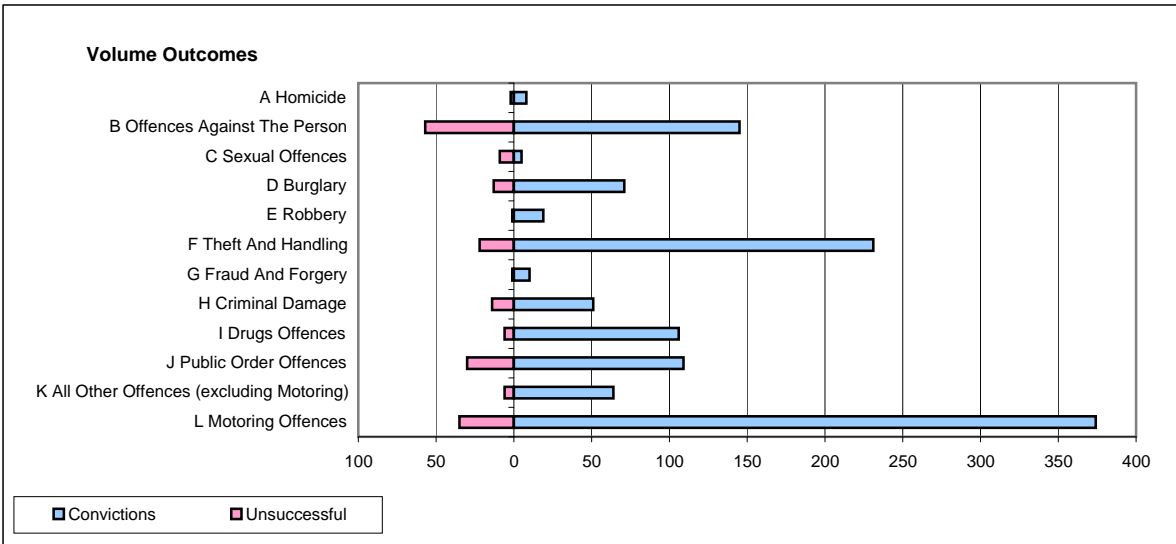
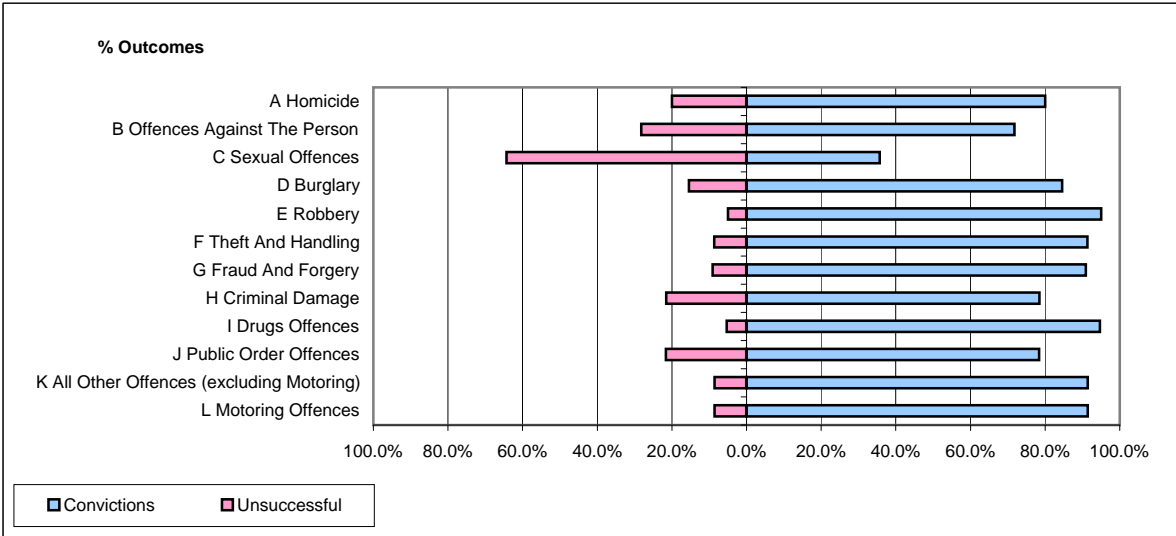


CPS OUTCOMES BY PRINCIPAL OFFENCE CATEGORY

December 2008

P31-Nottinghamshire



	Convictions		Unsuccessful	
	Number of Defendants	%	Number of Defendants	%
A Homicide	8	80.0%	2	20.0%
B Offences Against The Person	145	71.8%	57	28.2%
C Sexual Offences	5	35.7%	9	64.3%
D Burglary	71	84.5%	13	15.5%
E Robbery	19	95.0%	1	5.0%
F Theft And Handling	231	91.3%	22	8.7%
G Fraud And Forgery	10	90.9%	1	9.1%
H Criminal Damage	51	78.5%	14	21.5%
I Drugs Offences	106	94.6%	6	5.4%
J Public Order Offences	109	78.4%	30	21.6%
K All Other Offences (excluding Motoring)	64	91.4%	6	8.6%
L Motoring Offences	374	91.4%	35	8.6%
Admin Finalisations	0	0.0%	13	100.0%
TOTAL	1,193	85.1%	209	14.9%