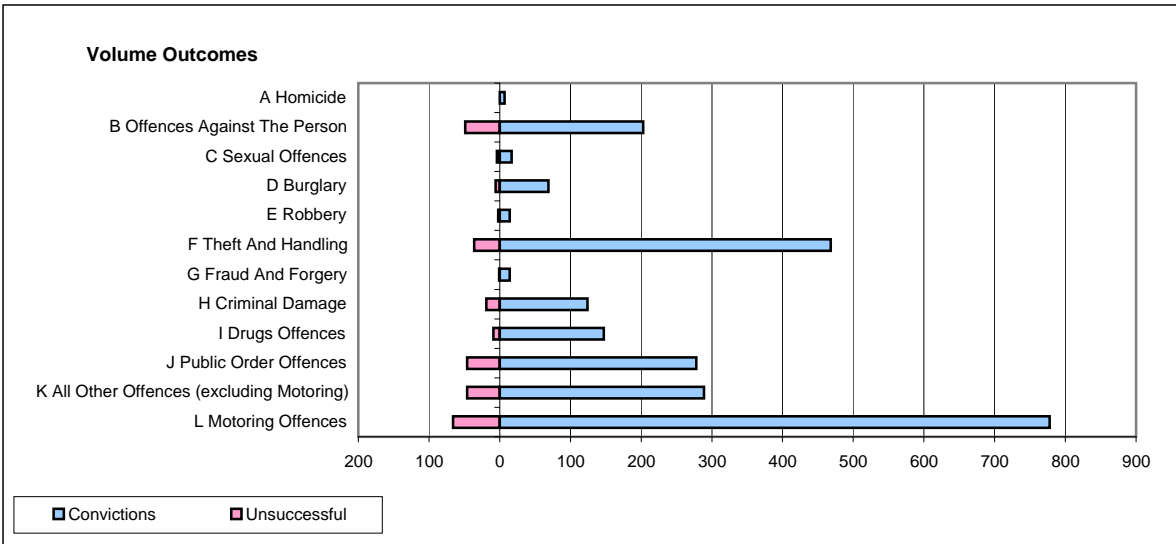
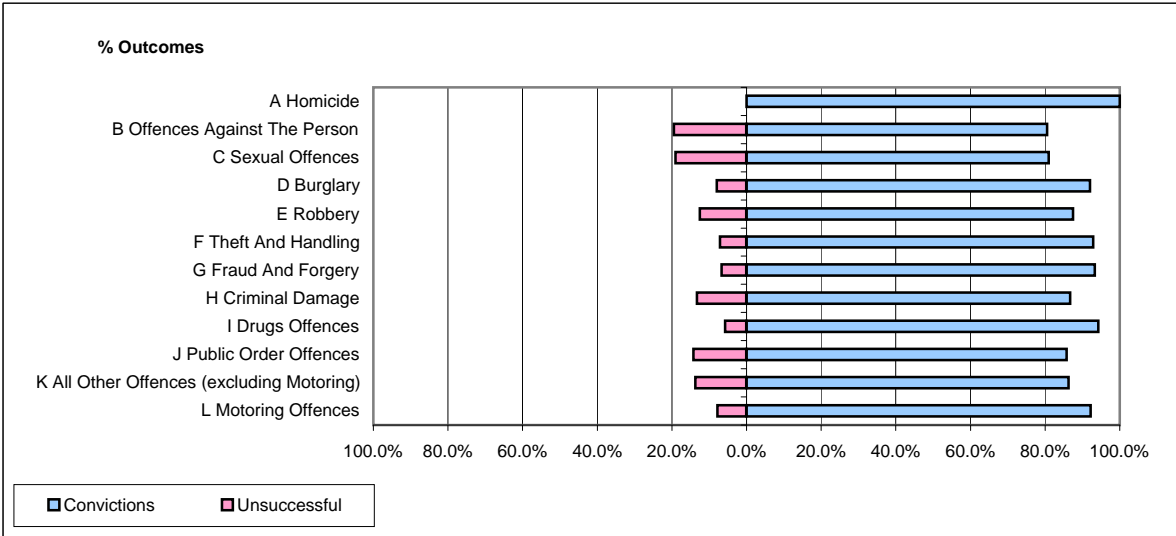


CPS OUTCOMES BY PRINCIPAL OFFENCE CATEGORY

December 2008

P28-Northumbria



	Convictions		Unsuccessful	
	Number of Defendants	%	Number of Defendants	%
A Homicide	7	100.0%	0	0.0%
B Offences Against The Person	203	80.6%	49	19.4%
C Sexual Offences	17	81.0%	4	19.0%
D Burglary	69	92.0%	6	8.0%
E Robbery	14	87.5%	2	12.5%
F Theft And Handling	468	92.9%	36	7.1%
G Fraud And Forgery	14	93.3%	1	6.7%
H Criminal Damage	124	86.7%	19	13.3%
I Drugs Offences	147	94.2%	9	5.8%
J Public Order Offences	278	85.8%	46	14.2%
K All Other Offences (excluding Motoring)	289	86.3%	46	13.7%
L Motoring Offences	778	92.2%	66	7.8%
Admin Finalisations	0	0.0%	30	100.0%
TOTAL	2,408	88.5%	314	11.5%