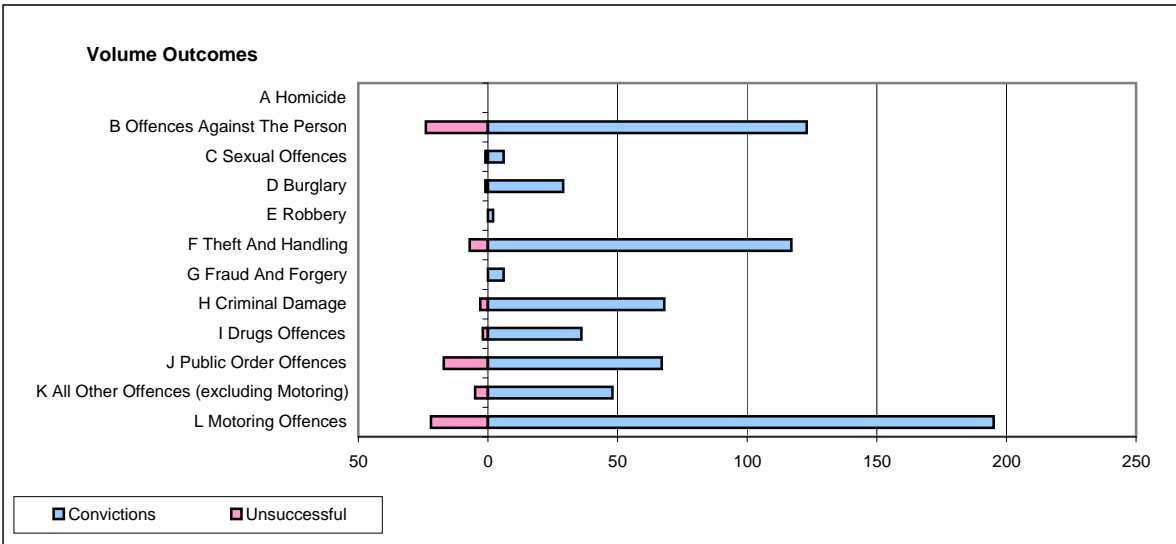
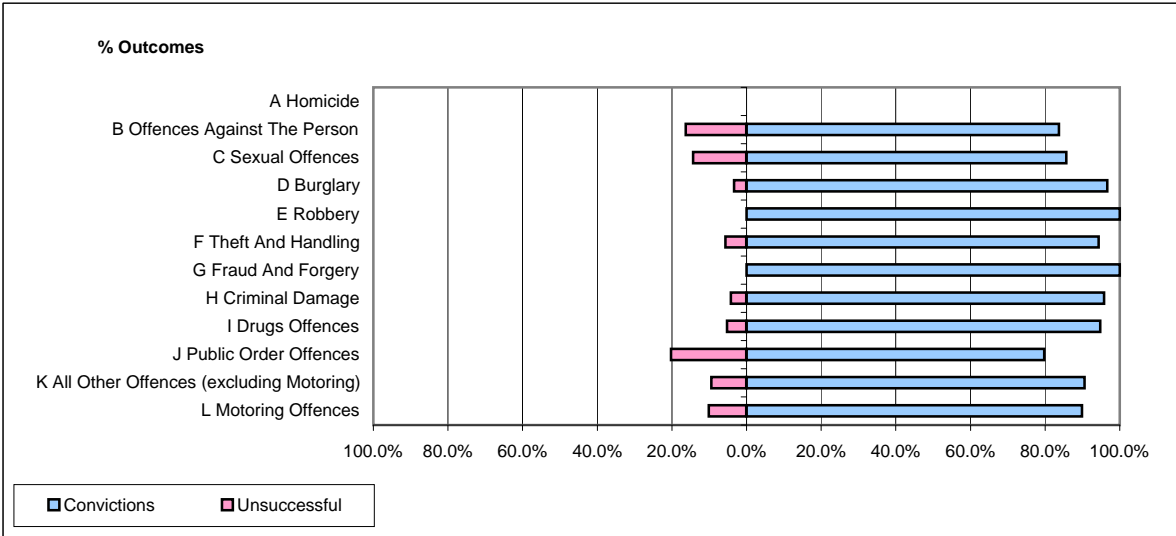


CPS OUTCOMES BY PRINCIPAL OFFENCE CATEGORY

December 2008

P29-NorthWales



	Convictions		Unsuccessful	
	Number of Defendants	%	Number of Defendants	%
A Homicide	0	0	0	0
B Offences Against The Person	123	83.7%	24	16.3%
C Sexual Offences	6	85.7%	1	14.3%
D Burglary	29	96.7%	1	3.3%
E Robbery	2	100.0%	0	0.0%
F Theft And Handling	117	94.4%	7	5.6%
G Fraud And Forgery	6	100.0%	0	0.0%
H Criminal Damage	68	95.8%	3	4.2%
I Drugs Offences	36	94.7%	2	5.3%
J Public Order Offences	67	79.8%	17	20.2%
K All Other Offences (excluding Motoring)	48	90.6%	5	9.4%
L Motoring Offences	195	89.9%	22	10.1%
Admin Finalisations	0	0.0%	8	100.0%
TOTAL	697	88.6%	90	11.4%