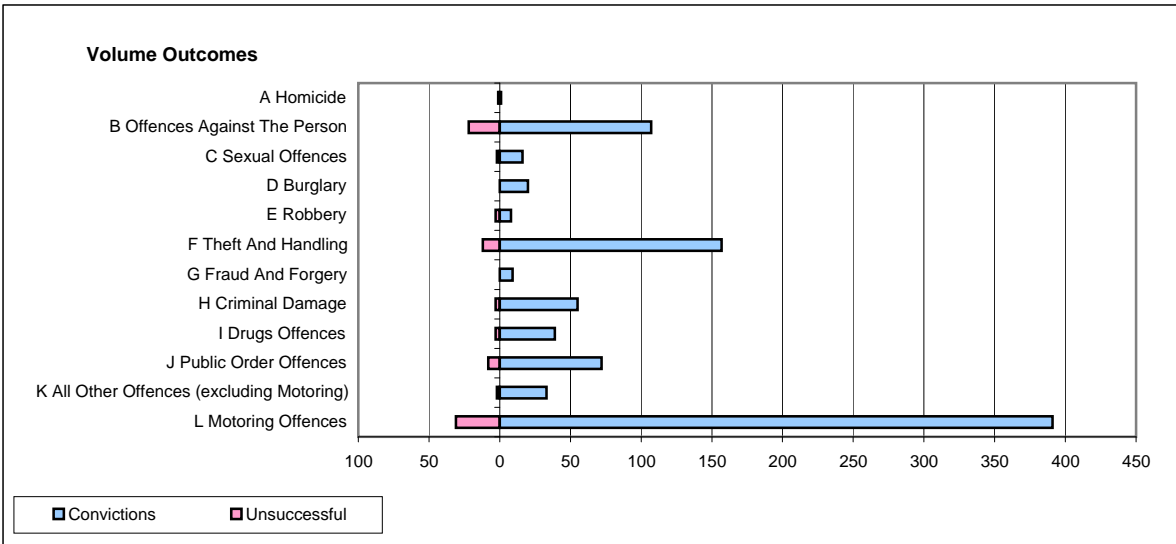
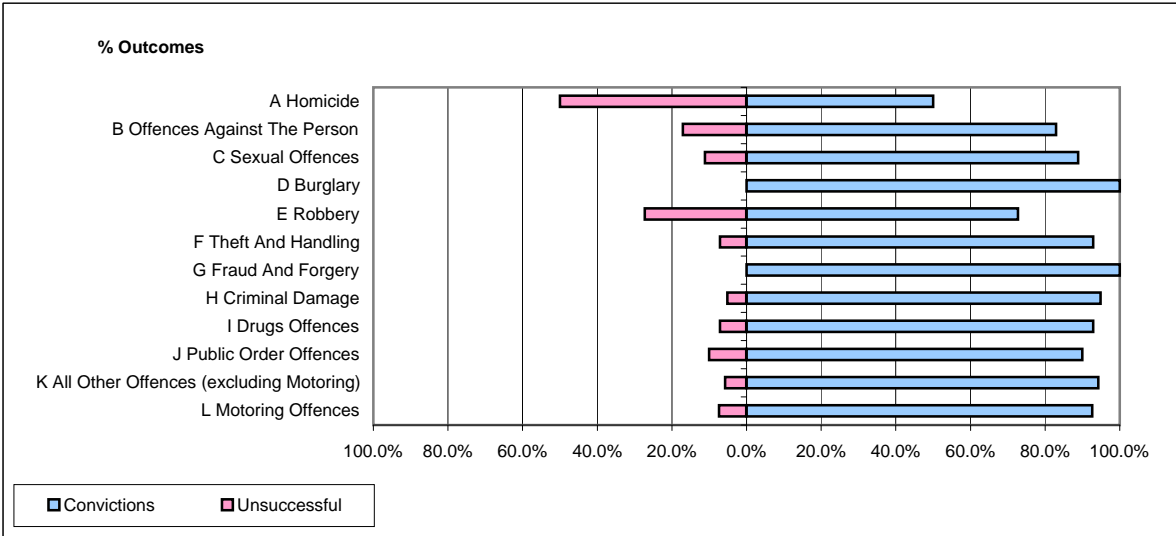


CPS OUTCOMES BY PRINCIPAL OFFENCE CATEGORY

December 2008

P26-Norfolk



	Convictions		Unsuccessful	
	Number of Defendants	%	Number of Defendants	%
A Homicide	1	50.0%	1	50.0%
B Offences Against The Person	107	82.9%	22	17.1%
C Sexual Offences	16	88.9%	2	11.1%
D Burglary	20	100.0%	0	0.0%
E Robbery	8	72.7%	3	27.3%
F Theft And Handling	157	92.9%	12	7.1%
G Fraud And Forgery	9	100.0%	0	0.0%
H Criminal Damage	55	94.8%	3	5.2%
I Drugs Offences	39	92.9%	3	7.1%
J Public Order Offences	72	90.0%	8	10.0%
K All Other Offences (excluding Motoring)	33	94.3%	2	5.7%
L Motoring Offences	391	92.7%	31	7.3%
Admin Finalisations	0	0.0%	23	100.0%
TOTAL	908	89.2%	110	10.8%