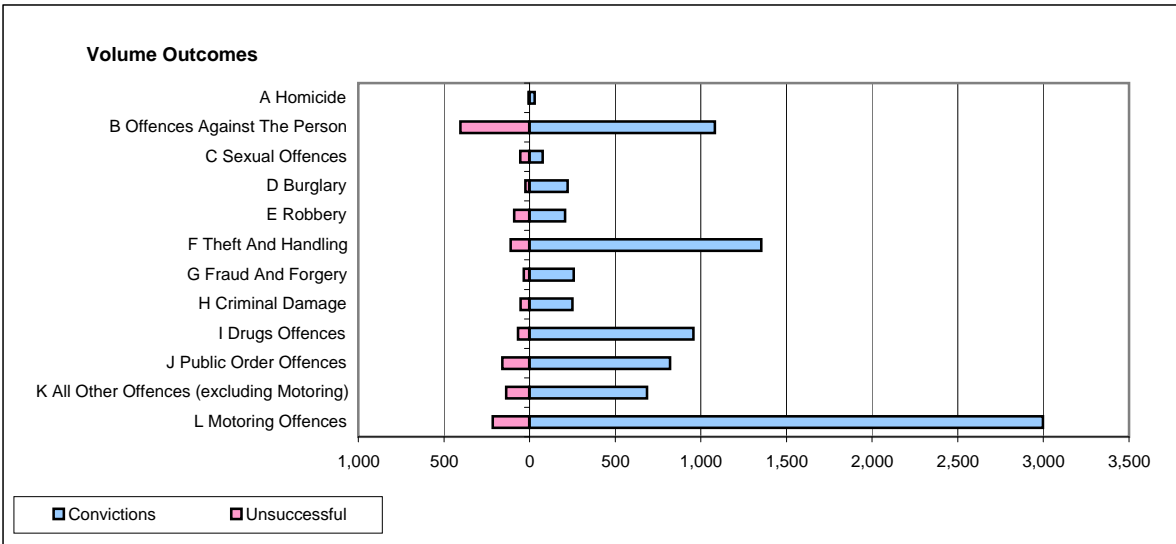
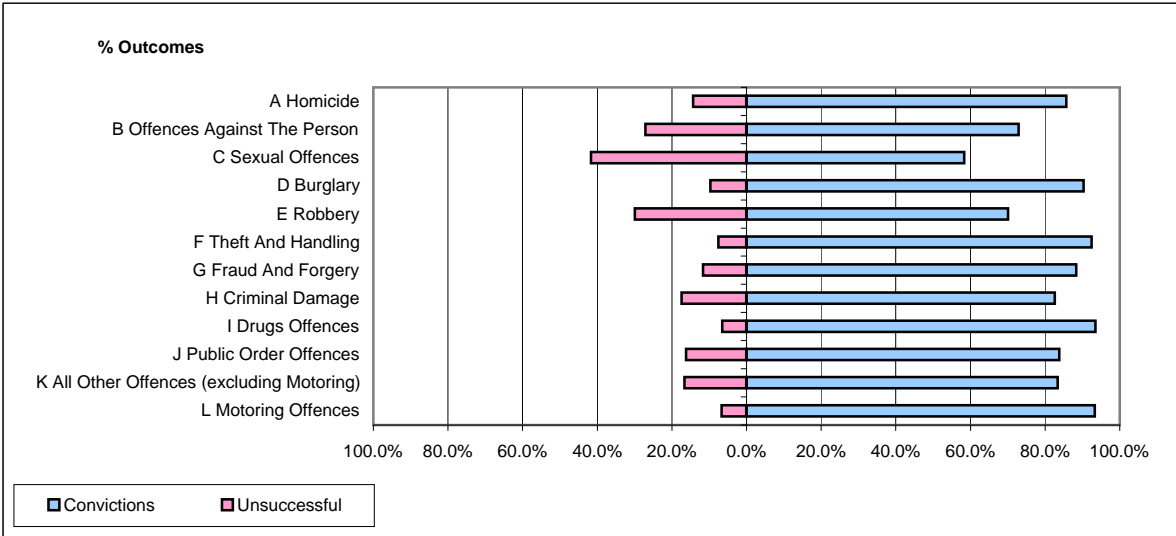


CPS OUTCOMES BY PRINCIPAL OFFENCE CATEGORY

December 2008

P25-Metropolitan&City



| | Convictions | | Unsuccessful | |
|--|----------------------|--------------|----------------------|---------------|
| | Number of Defendants | % | Number of Defendants | % |
| A Homicide | 30 | 85.7% | 5 | 14.3% |
| B Offences Against The Person | 1,082 | 72.9% | 403 | 27.1% |
| C Sexual Offences | 77 | 58.3% | 55 | 41.7% |
| D Burglary | 223 | 90.3% | 24 | 9.7% |
| E Robbery | 208 | 70.0% | 89 | 30.0% |
| F Theft And Handling | 1,353 | 92.5% | 110 | 7.5% |
| G Fraud And Forgery | 257 | 88.3% | 34 | 11.7% |
| H Criminal Damage | 251 | 82.6% | 53 | 17.4% |
| I Drugs Offences | 956 | 93.5% | 67 | 6.5% |
| J Public Order Offences | 821 | 83.8% | 159 | 16.2% |
| K All Other Offences (excluding Motoring) | 685 | 83.3% | 137 | 16.7% |
| L Motoring Offences | 2,997 | 93.3% | 215 | 6.7% |
| Admin Finalisations | 0 | 0.0% | 337 | 100.0% |
| TOTAL | 8,940 | 84.1% | 1,688 | 15.9% |