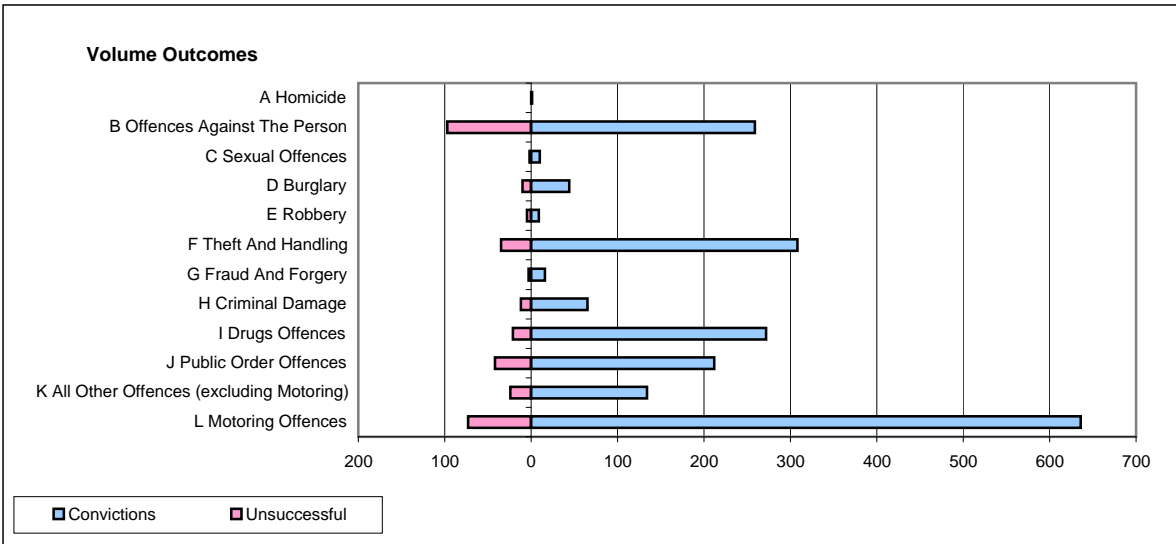
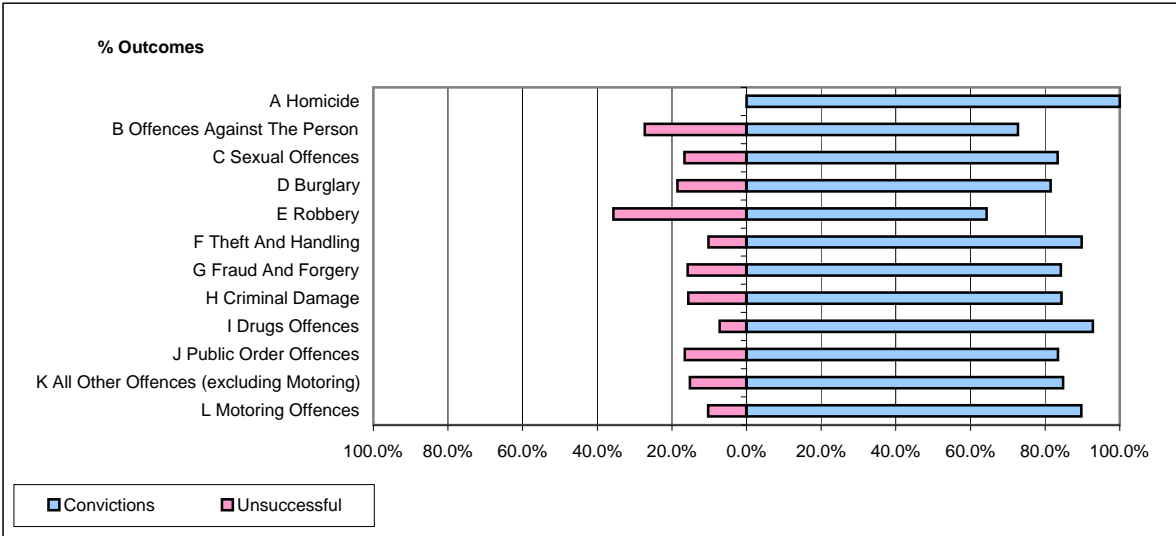


**CPS OUTCOMES BY PRINCIPAL OFFENCE CATEGORY**

**December 2008**

**P24-Merseyside**



	Convictions		Unsuccessful	
	Number of Defendants	%	Number of Defendants	%
<b>A Homicide</b>	<b>1</b>	<b>100.0%</b>	<b>0</b>	<b>0.0%</b>
<b>B Offences Against The Person</b>	<b>259</b>	<b>72.8%</b>	<b>97</b>	<b>27.2%</b>
<b>C Sexual Offences</b>	<b>10</b>	<b>83.3%</b>	<b>2</b>	<b>16.7%</b>
<b>D Burglary</b>	<b>44</b>	<b>81.5%</b>	<b>10</b>	<b>18.5%</b>
<b>E Robbery</b>	<b>9</b>	<b>64.3%</b>	<b>5</b>	<b>35.7%</b>
<b>F Theft And Handling</b>	<b>308</b>	<b>89.8%</b>	<b>35</b>	<b>10.2%</b>
<b>G Fraud And Forgery</b>	<b>16</b>	<b>84.2%</b>	<b>3</b>	<b>15.8%</b>
<b>H Criminal Damage</b>	<b>65</b>	<b>84.4%</b>	<b>12</b>	<b>15.6%</b>
<b>I Drugs Offences</b>	<b>272</b>	<b>92.8%</b>	<b>21</b>	<b>7.2%</b>
<b>J Public Order Offences</b>	<b>212</b>	<b>83.5%</b>	<b>42</b>	<b>16.5%</b>
<b>K All Other Offences (excluding Motoring)</b>	<b>134</b>	<b>84.8%</b>	<b>24</b>	<b>15.2%</b>
<b>L Motoring Offences</b>	<b>636</b>	<b>89.7%</b>	<b>73</b>	<b>10.3%</b>
<b>Admin Finalisations</b>	<b>0</b>	<b>0.0%</b>	<b>38</b>	<b>100.0%</b>
<b>TOTAL</b>	<b>1,966</b>	<b>84.5%</b>	<b>362</b>	<b>15.5%</b>