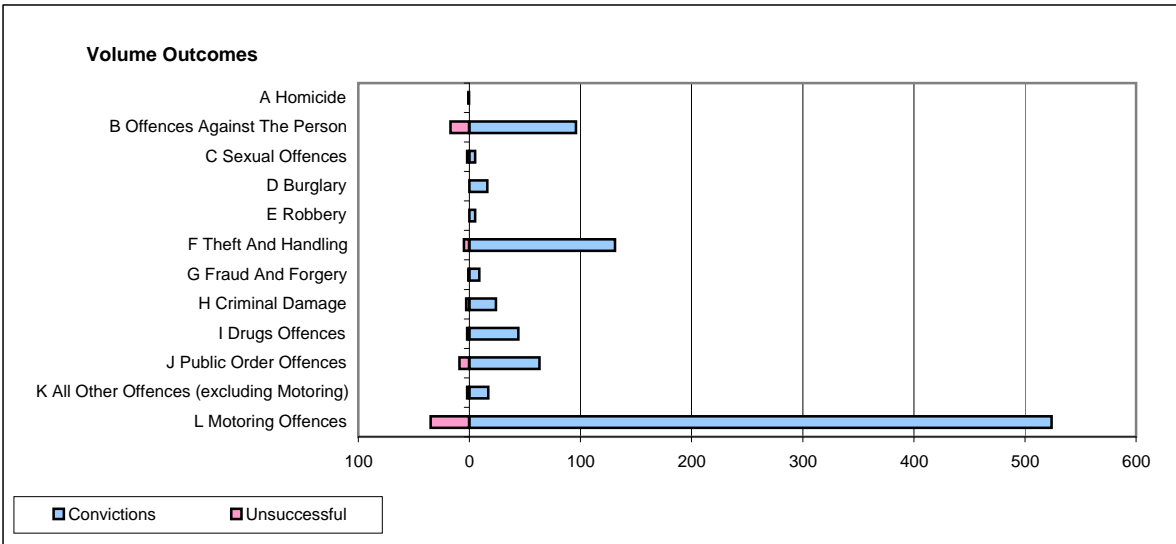
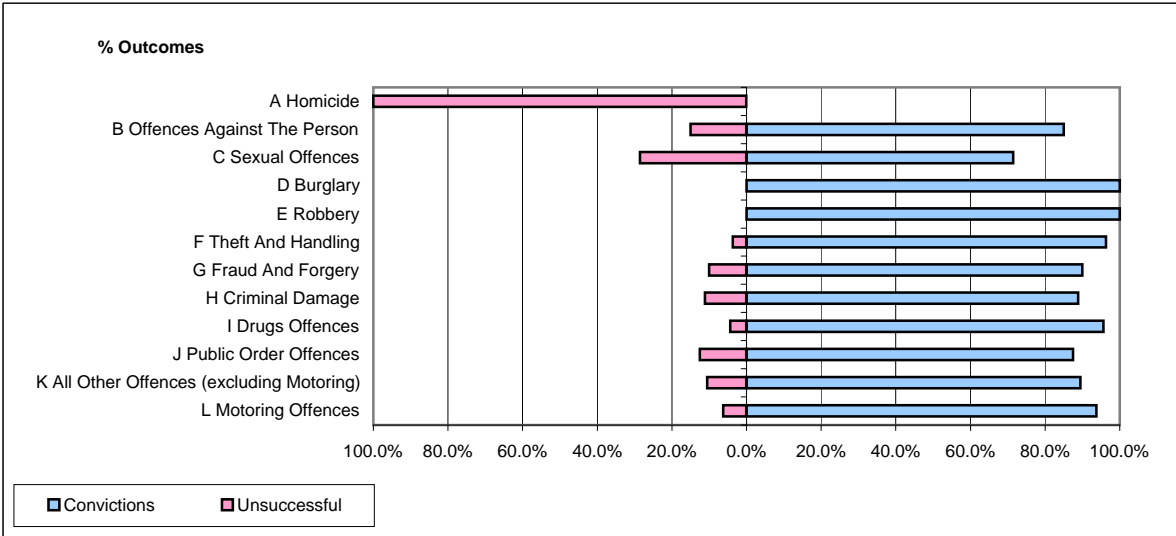


CPS OUTCOMES BY PRINCIPAL OFFENCE CATEGORY

December 2008

P23-Lincolnshire



	Convictions		Unsuccessful	
	Number of Defendants	%	Number of Defendants	%
A Homicide	0	0.0%	1	100.0%
B Offences Against The Person	96	85.0%	17	15.0%
C Sexual Offences	5	71.4%	2	28.6%
D Burglary	16	100.0%	0	0.0%
E Robbery	5	100.0%	0	0.0%
F Theft And Handling	131	96.3%	5	3.7%
G Fraud And Forgery	9	90.0%	1	10.0%
H Criminal Damage	24	88.9%	3	11.1%
I Drugs Offences	44	95.7%	2	4.3%
J Public Order Offences	63	87.5%	9	12.5%
K All Other Offences (excluding Motoring)	17	89.5%	2	10.5%
L Motoring Offences	524	93.7%	35	6.3%
Admin Finalisations	0	0.0%	4	100.0%
TOTAL	934	92.0%	81	8.0%