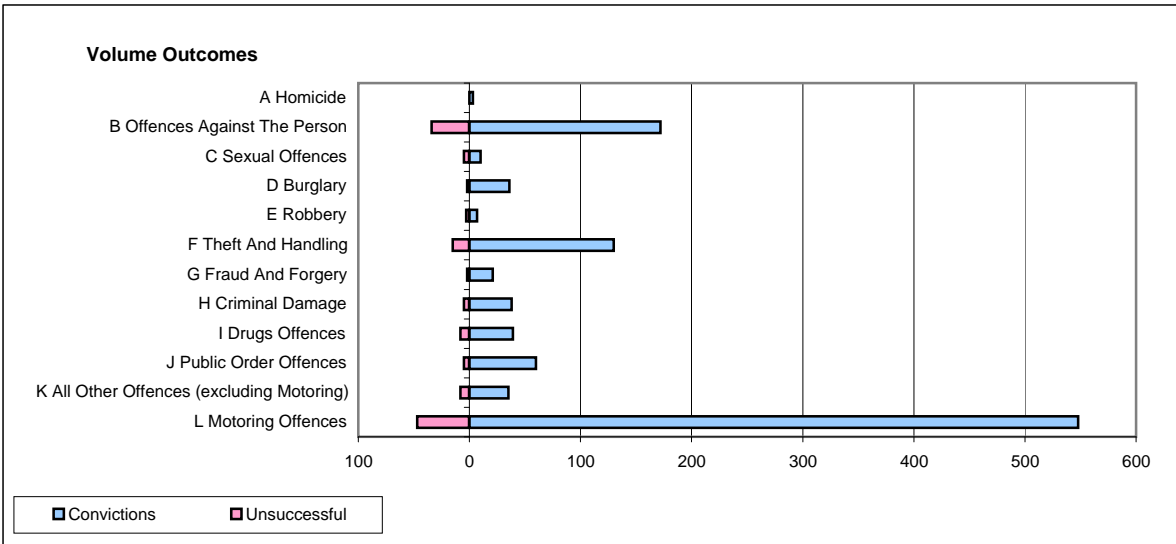
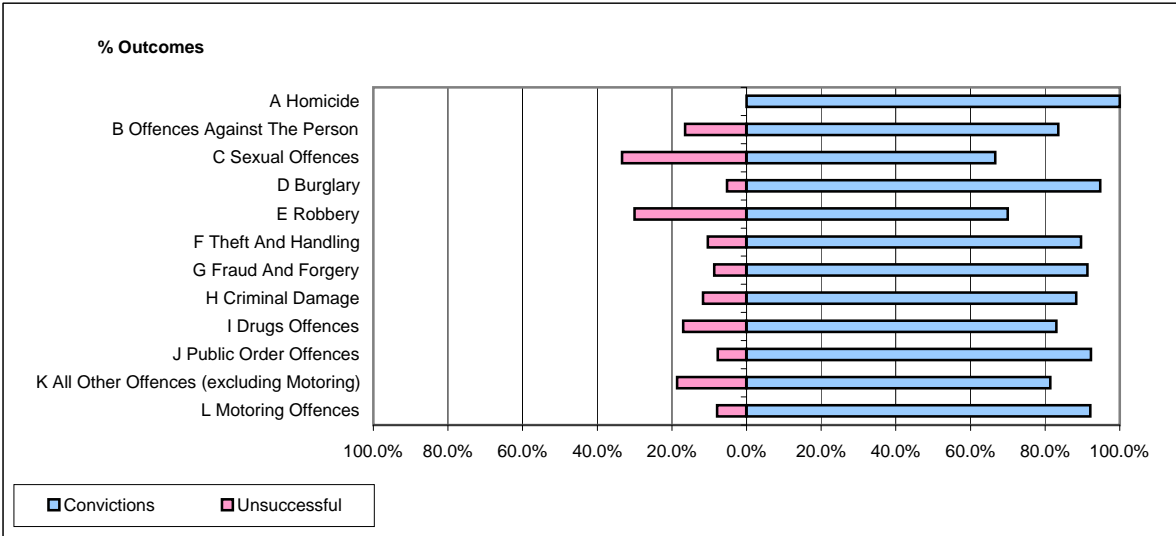


**CPS OUTCOMES BY PRINCIPAL OFFENCE CATEGORY**

**December 2008**

**P22-Leicestershire**



	Convictions		Unsuccessful	
	Number of Defendants	%	Number of Defendants	%
<b>A Homicide</b>	<b>3</b>	<b>100.0%</b>	<b>0</b>	<b>0.0%</b>
<b>B Offences Against The Person</b>	<b>172</b>	<b>83.5%</b>	<b>34</b>	<b>16.5%</b>
<b>C Sexual Offences</b>	<b>10</b>	<b>66.7%</b>	<b>5</b>	<b>33.3%</b>
<b>D Burglary</b>	<b>36</b>	<b>94.7%</b>	<b>2</b>	<b>5.3%</b>
<b>E Robbery</b>	<b>7</b>	<b>70.0%</b>	<b>3</b>	<b>30.0%</b>
<b>F Theft And Handling</b>	<b>130</b>	<b>89.7%</b>	<b>15</b>	<b>10.3%</b>
<b>G Fraud And Forgery</b>	<b>21</b>	<b>91.3%</b>	<b>2</b>	<b>8.7%</b>
<b>H Criminal Damage</b>	<b>38</b>	<b>88.4%</b>	<b>5</b>	<b>11.6%</b>
<b>I Drugs Offences</b>	<b>39</b>	<b>83.0%</b>	<b>8</b>	<b>17.0%</b>
<b>J Public Order Offences</b>	<b>60</b>	<b>92.3%</b>	<b>5</b>	<b>7.7%</b>
<b>K All Other Offences (excluding Motoring)</b>	<b>35</b>	<b>81.4%</b>	<b>8</b>	<b>18.6%</b>
<b>L Motoring Offences</b>	<b>548</b>	<b>92.1%</b>	<b>47</b>	<b>7.9%</b>
<b>Admin Finalisations</b>	<b>0</b>	<b>0.0%</b>	<b>16</b>	<b>100.0%</b>
<b>TOTAL</b>	<b>1,099</b>	<b>88.0%</b>	<b>150</b>	<b>12.0%</b>