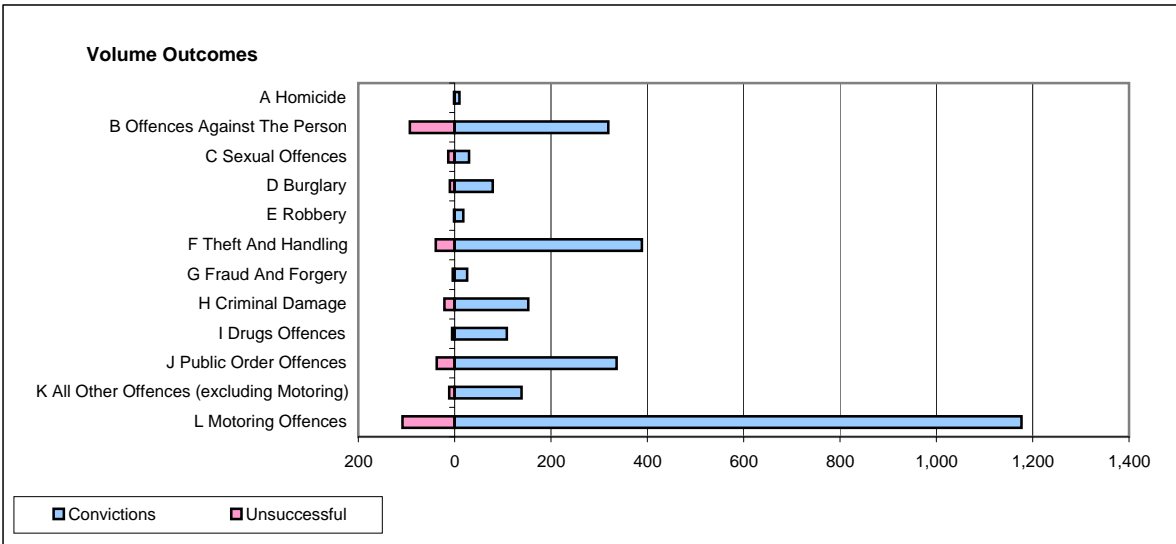
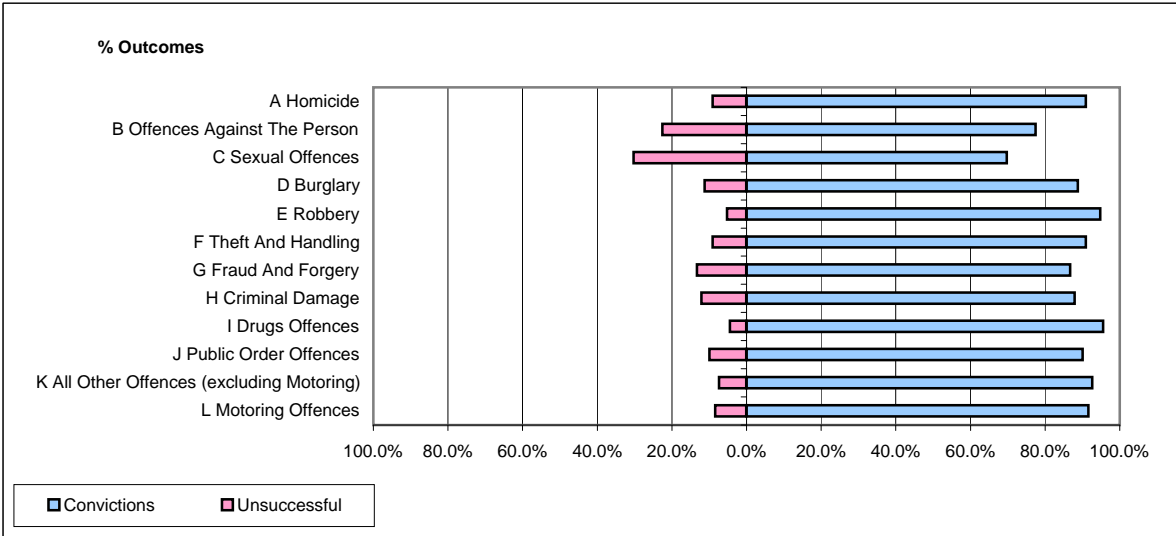


**CPS OUTCOMES BY PRINCIPAL OFFENCE CATEGORY**

**December 2008**

**P21-Lancashire**



	Convictions		Unsuccessful	
	Number of Defendants	%	Number of Defendants	%
<b>A Homicide</b>	<b>10</b>	<b>90.9%</b>	<b>1</b>	<b>9.1%</b>
<b>B Offences Against The Person</b>	<b>319</b>	<b>77.4%</b>	<b>93</b>	<b>22.6%</b>
<b>C Sexual Offences</b>	<b>30</b>	<b>69.8%</b>	<b>13</b>	<b>30.2%</b>
<b>D Burglary</b>	<b>79</b>	<b>88.8%</b>	<b>10</b>	<b>11.2%</b>
<b>E Robbery</b>	<b>18</b>	<b>94.7%</b>	<b>1</b>	<b>5.3%</b>
<b>F Theft And Handling</b>	<b>389</b>	<b>90.9%</b>	<b>39</b>	<b>9.1%</b>
<b>G Fraud And Forgery</b>	<b>26</b>	<b>86.7%</b>	<b>4</b>	<b>13.3%</b>
<b>H Criminal Damage</b>	<b>153</b>	<b>87.9%</b>	<b>21</b>	<b>12.1%</b>
<b>I Drugs Offences</b>	<b>108</b>	<b>95.6%</b>	<b>5</b>	<b>4.4%</b>
<b>J Public Order Offences</b>	<b>336</b>	<b>90.1%</b>	<b>37</b>	<b>9.9%</b>
<b>K All Other Offences (excluding Motoring)</b>	<b>139</b>	<b>92.7%</b>	<b>11</b>	<b>7.3%</b>
<b>L Motoring Offences</b>	<b>1,177</b>	<b>91.6%</b>	<b>108</b>	<b>8.4%</b>
<b>Admin Finalisations</b>	<b>0</b>	<b>0.0%</b>	<b>33</b>	<b>100.0%</b>
<b>TOTAL</b>	<b>2,784</b>	<b>88.1%</b>	<b>376</b>	<b>11.9%</b>