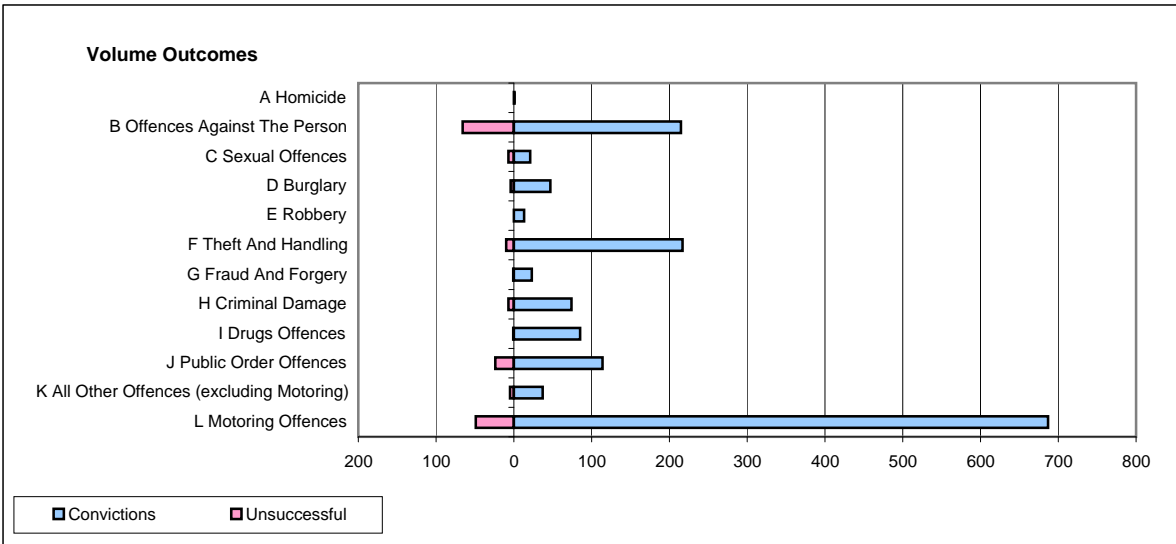
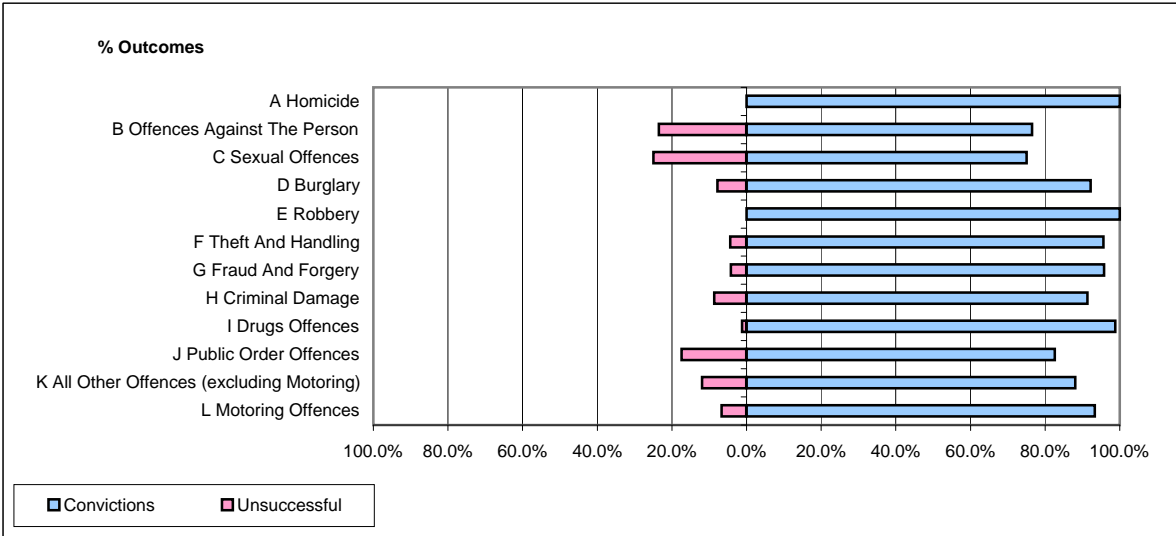


CPS OUTCOMES BY PRINCIPAL OFFENCE CATEGORY

December 2008

P20-Kent



	Convictions		Unsuccessful	
	Number of Defendants	%	Number of Defendants	%
A Homicide	1	100.0%	0	0.0%
B Offences Against The Person	215	76.5%	66	23.5%
C Sexual Offences	21	75.0%	7	25.0%
D Burglary	47	92.2%	4	7.8%
E Robbery	13	100.0%	0	0.0%
F Theft And Handling	217	95.6%	10	4.4%
G Fraud And Forgery	23	95.8%	1	4.2%
H Criminal Damage	74	91.4%	7	8.6%
I Drugs Offences	85	98.8%	1	1.2%
J Public Order Offences	114	82.6%	24	17.4%
K All Other Offences (excluding Motoring)	37	88.1%	5	11.9%
L Motoring Offences	687	93.3%	49	6.7%
Admin Finalisations	0	0.0%	36	100.0%
TOTAL	1,534	88.0%	210	12.0%