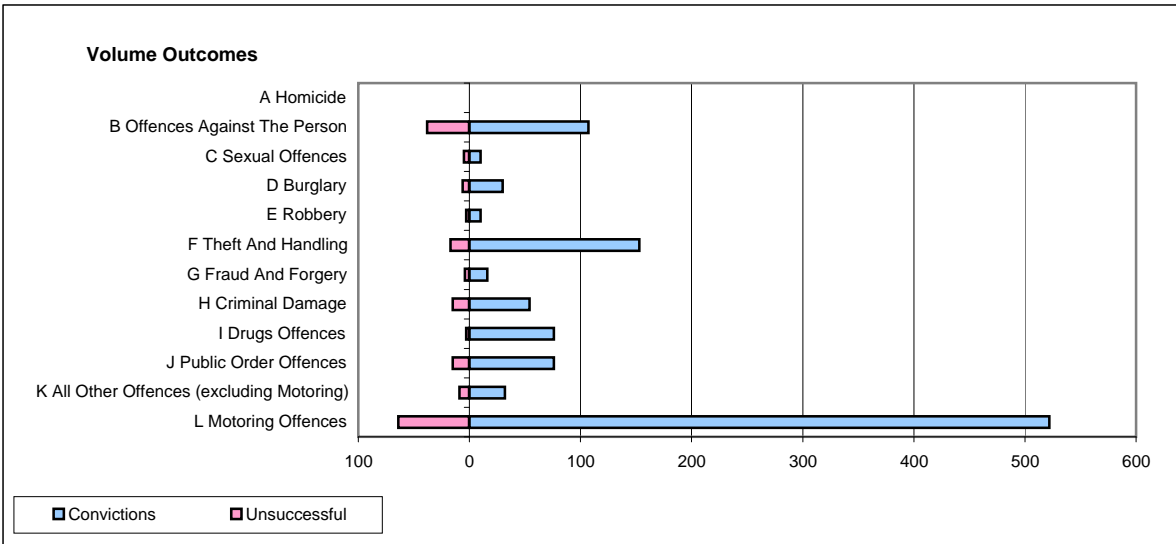
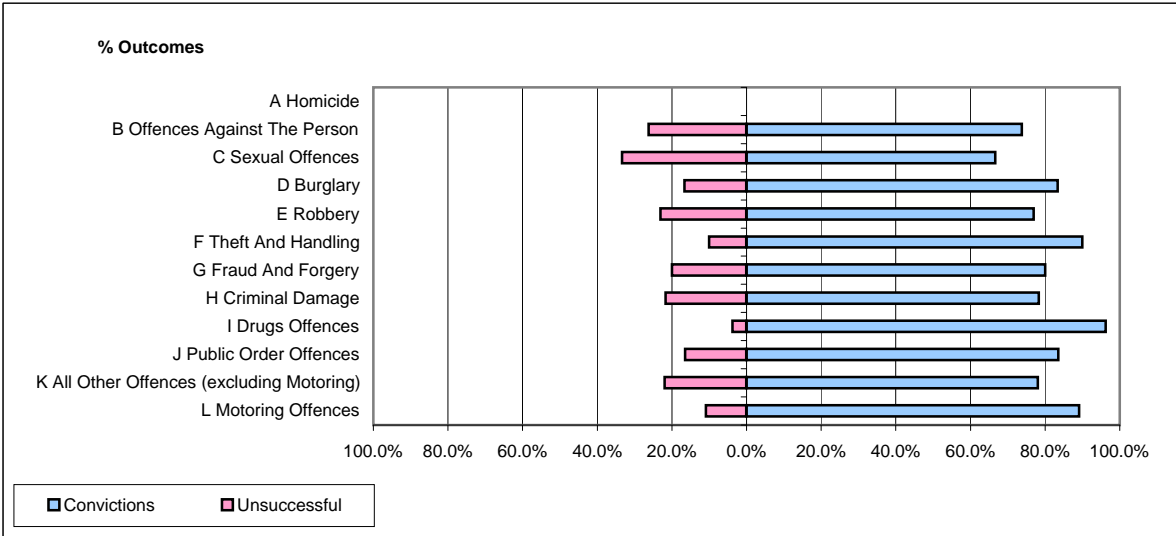


CPS OUTCOMES BY PRINCIPAL OFFENCE CATEGORY

December 2008

P18-Hertfordshire



	Convictions		Unsuccessful	
	Number of Defendants	%	Number of Defendants	%
A Homicide	0	0	0	0
B Offences Against The Person	107	73.8%	38	26.2%
C Sexual Offences	10	66.7%	5	33.3%
D Burglary	30	83.3%	6	16.7%
E Robbery	10	76.9%	3	23.1%
F Theft And Handling	153	90.0%	17	10.0%
G Fraud And Forgery	16	80.0%	4	20.0%
H Criminal Damage	54	78.3%	15	21.7%
I Drugs Offences	76	96.2%	3	3.8%
J Public Order Offences	76	83.5%	15	16.5%
K All Other Offences (excluding Motoring)	32	78.0%	9	22.0%
L Motoring Offences	522	89.1%	64	10.9%
Admin Finalisations	0	0.0%	32	100.0%
TOTAL	1,086	83.7%	211	16.3%