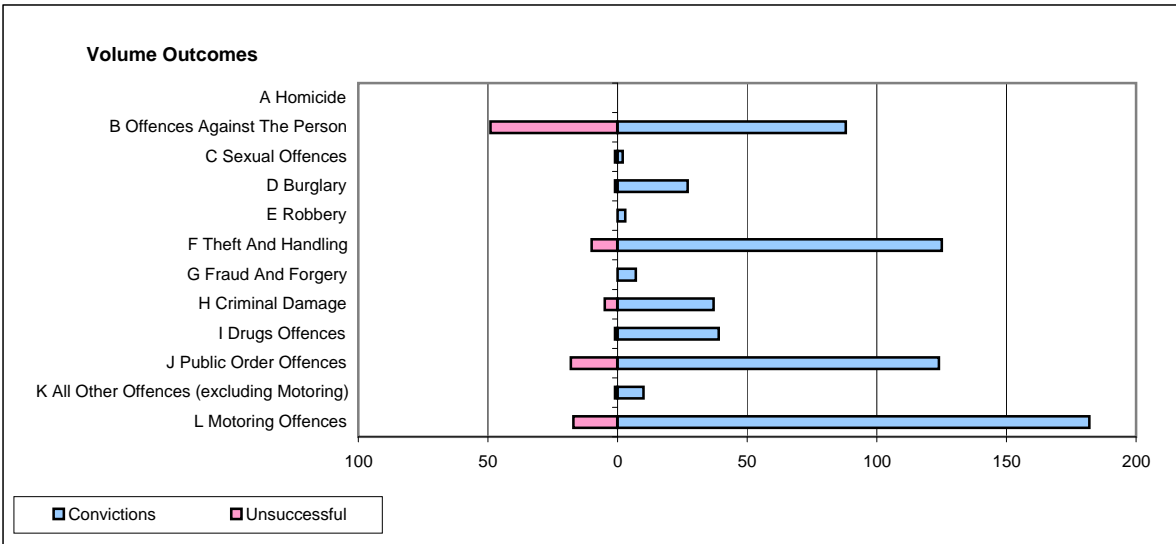
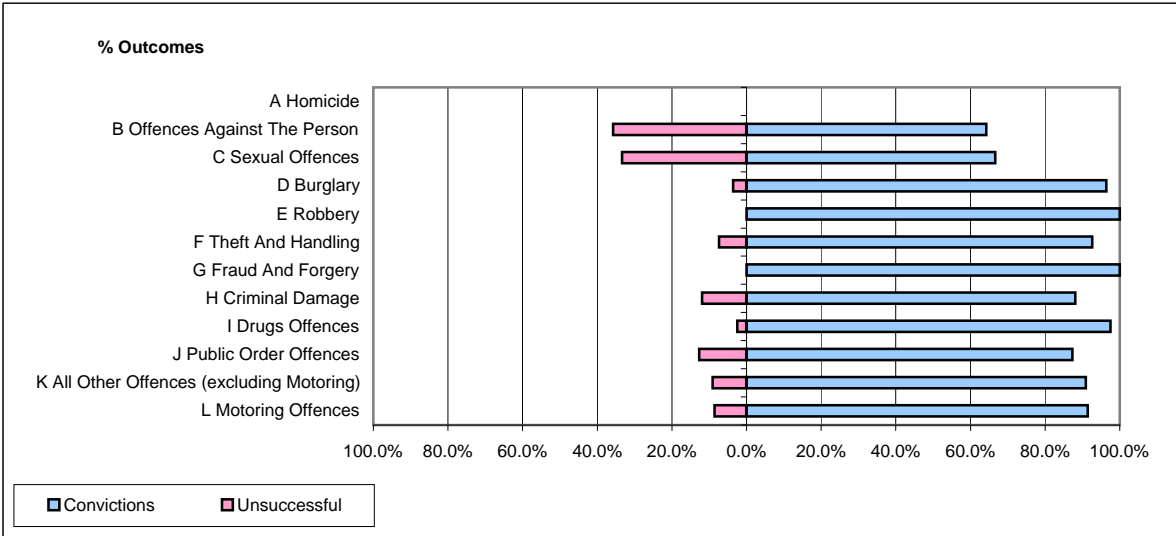


CPS OUTCOMES BY PRINCIPAL OFFENCE CATEGORY

December 2008

P16-Gwent



	Convictions		Unsuccessful	
	Number of Defendants	%	Number of Defendants	%
A Homicide	0	0	0	0
B Offences Against The Person	88	64.2%	49	35.8%
C Sexual Offences	2	66.7%	1	33.3%
D Burglary	27	96.4%	1	3.6%
E Robbery	3	100.0%	0	0.0%
F Theft And Handling	125	92.6%	10	7.4%
G Fraud And Forgery	7	100.0%	0	0.0%
H Criminal Damage	37	88.1%	5	11.9%
I Drugs Offences	39	97.5%	1	2.5%
J Public Order Offences	124	87.3%	18	12.7%
K All Other Offences (excluding Motoring)	10	90.9%	1	9.1%
L Motoring Offences	182	91.5%	17	8.5%
Admin Finalisations	0	0.0%	5	100.0%
TOTAL	644	85.6%	108	14.4%