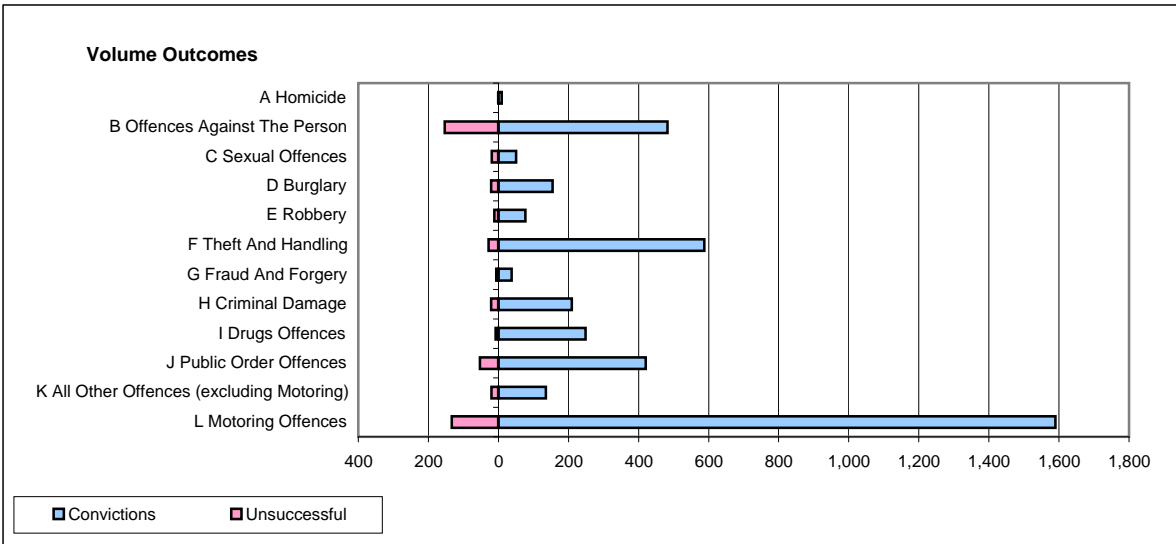
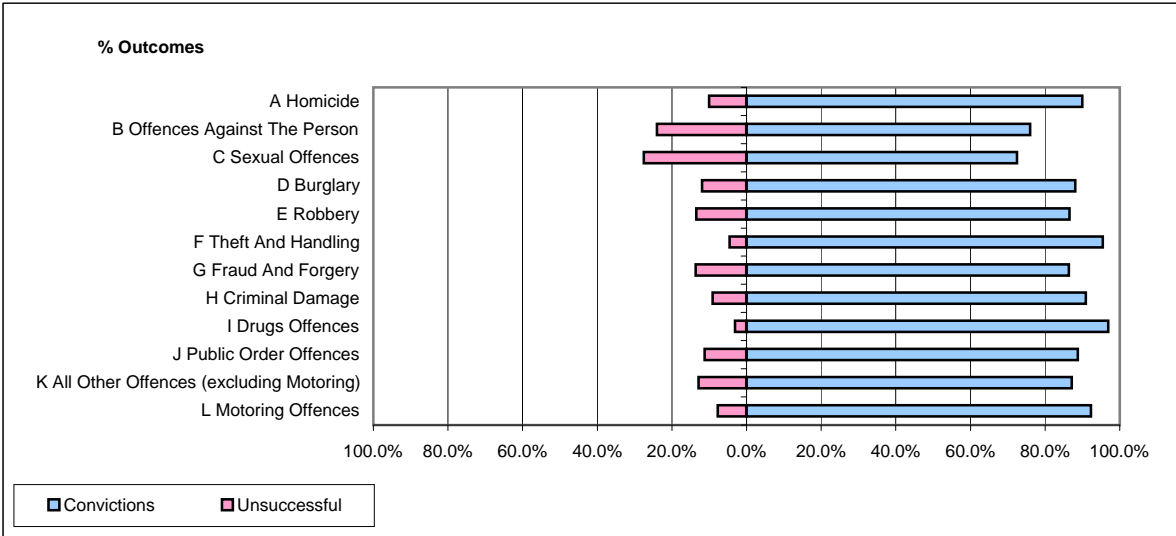


CPS OUTCOMES BY PRINCIPAL OFFENCE CATEGORY

December 2008

P15-GreaterManchester



	Convictions		Unsuccessful	
	Number of Defendants	%	Number of Defendants	%
A Homicide	9	90.0%	1	10.0%
B Offences Against The Person	483	75.9%	153	24.1%
C Sexual Offences	50	72.5%	19	27.5%
D Burglary	155	88.1%	21	11.9%
E Robbery	77	86.5%	12	13.5%
F Theft And Handling	588	95.5%	28	4.5%
G Fraud And Forgery	38	86.4%	6	13.6%
H Criminal Damage	209	90.9%	21	9.1%
I Drugs Offences	249	96.9%	8	3.1%
J Public Order Offences	420	88.8%	53	11.2%
K All Other Offences (excluding Motoring)	135	87.1%	20	12.9%
L Motoring Offences	1,590	92.3%	133	7.7%
Admin Finalisations	0	0.0%	75	100.0%
TOTAL	4,003	87.9%	550	12.1%