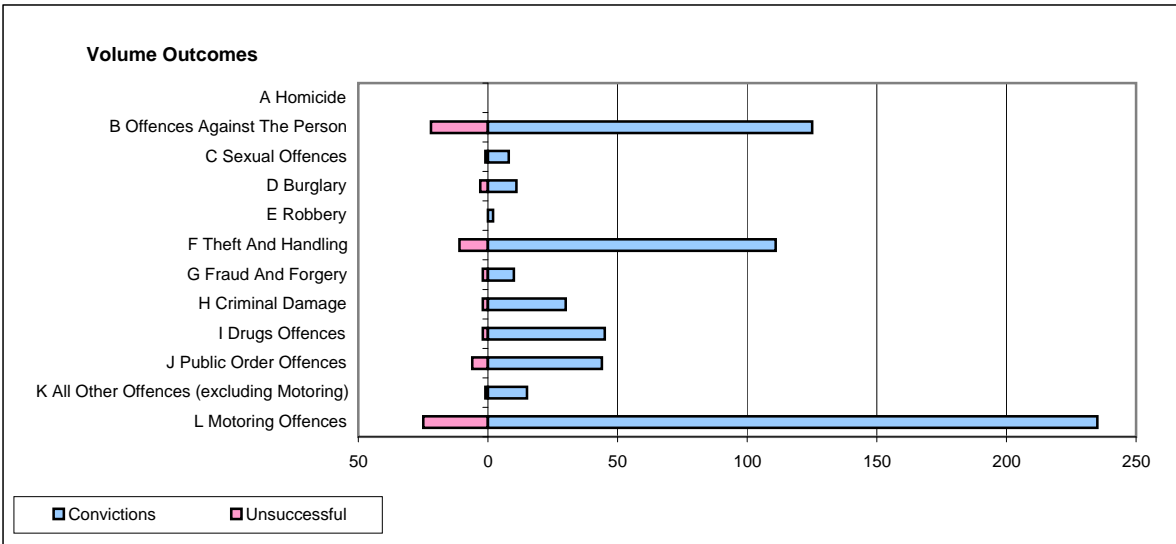
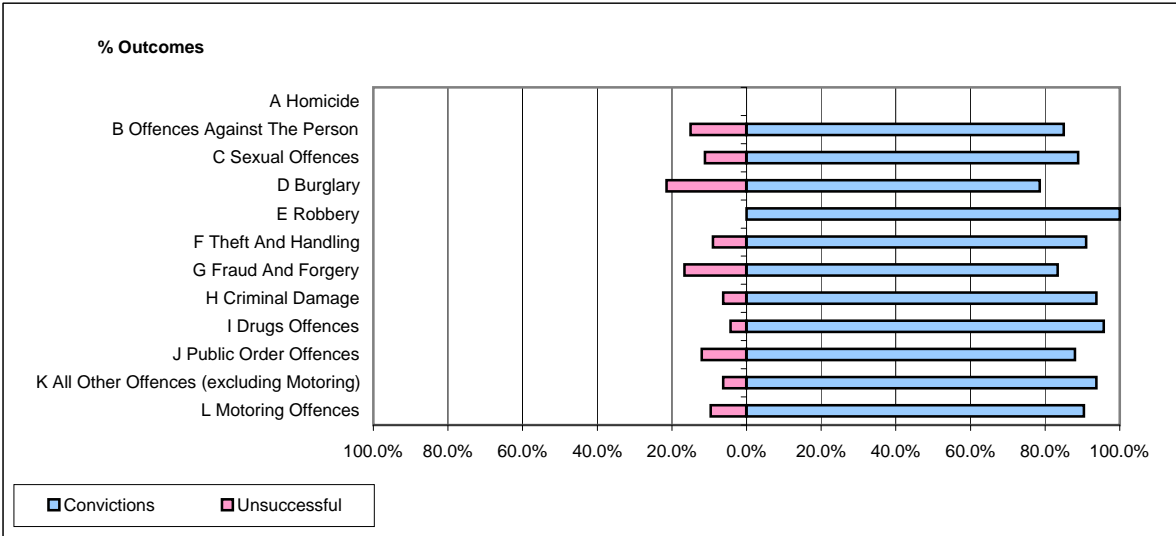


CPS OUTCOMES BY PRINCIPAL OFFENCE CATEGORY

December 2008

P14-Gloucestershire



	Convictions		Unsuccessful	
	Number of Defendants	%	Number of Defendants	%
A Homicide	0	0	0	0
B Offences Against The Person	125	85.0%	22	15.0%
C Sexual Offences	8	88.9%	1	11.1%
D Burglary	11	78.6%	3	21.4%
E Robbery	2	100.0%	0	0.0%
F Theft And Handling	111	91.0%	11	9.0%
G Fraud And Forgery	10	83.3%	2	16.7%
H Criminal Damage	30	93.8%	2	6.3%
I Drugs Offences	45	95.7%	2	4.3%
J Public Order Offences	44	88.0%	6	12.0%
K All Other Offences (excluding Motoring)	15	93.8%	1	6.3%
L Motoring Offences	235	90.4%	25	9.6%
Admin Finalisations	0	0.0%	9	100.0%
TOTAL	636	88.3%	84	11.7%