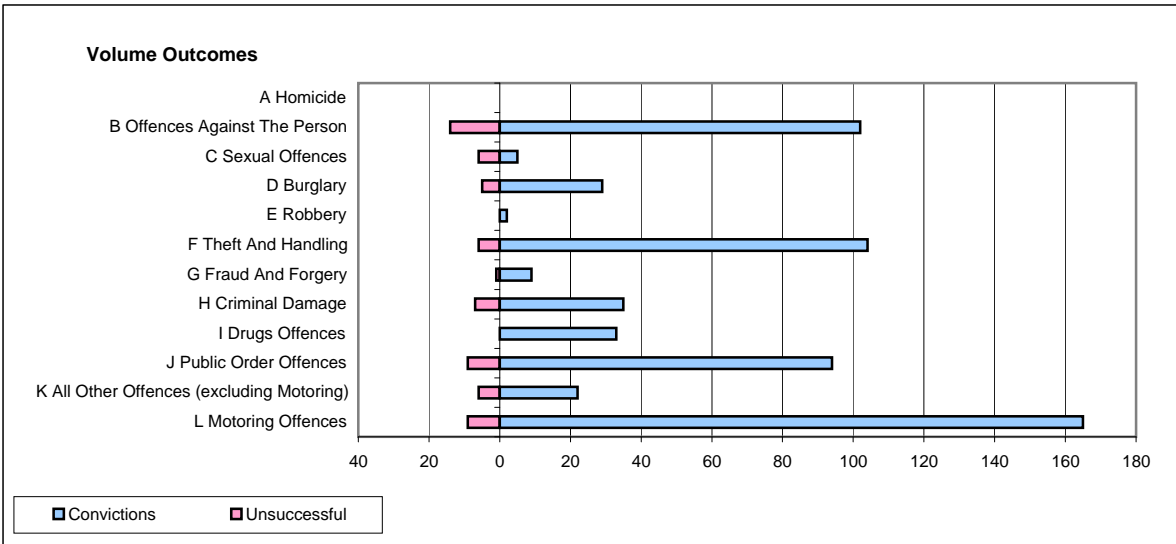
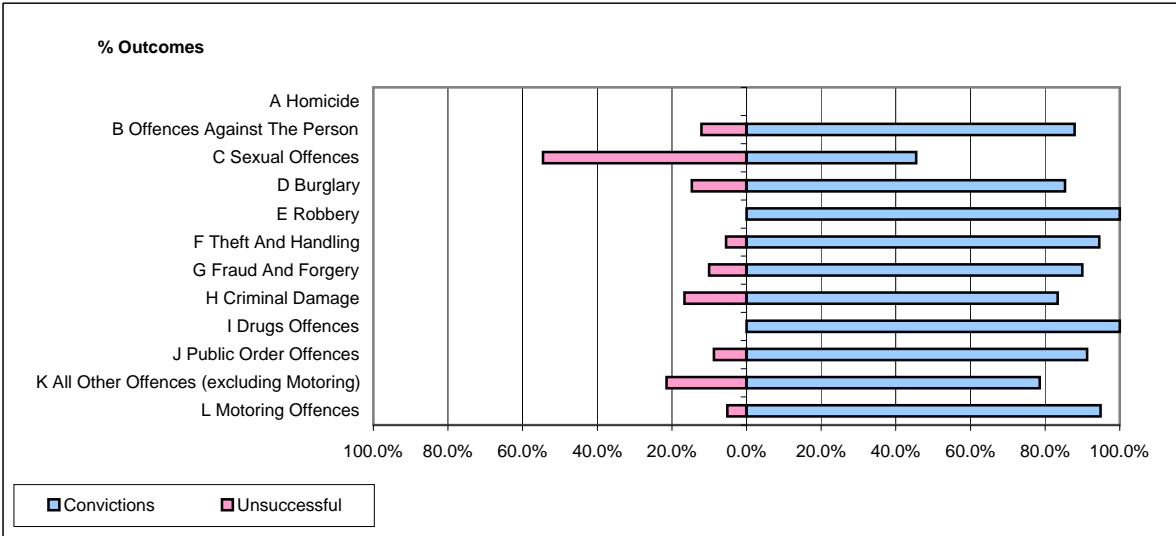


CPS OUTCOMES BY PRINCIPAL OFFENCE CATEGORY

December 2008

P11-Durham



	Convictions		Unsuccessful	
	Number of Defendants	%	Number of Defendants	%
A Homicide	0	0	0	0
B Offences Against The Person	102	87.9%	14	12.1%
C Sexual Offences	5	45.5%	6	54.5%
D Burglary	29	85.3%	5	14.7%
E Robbery	2	100.0%	0	0.0%
F Theft And Handling	104	94.5%	6	5.5%
G Fraud And Forgery	9	90.0%	1	10.0%
H Criminal Damage	35	83.3%	7	16.7%
I Drugs Offences	33	100.0%	0	0.0%
J Public Order Offences	94	91.3%	9	8.7%
K All Other Offences (excluding Motoring)	22	78.6%	6	21.4%
L Motoring Offences	165	94.8%	9	5.2%
Admin Finalisations	0	0.0%	7	100.0%
TOTAL	600	89.6%	70	10.4%