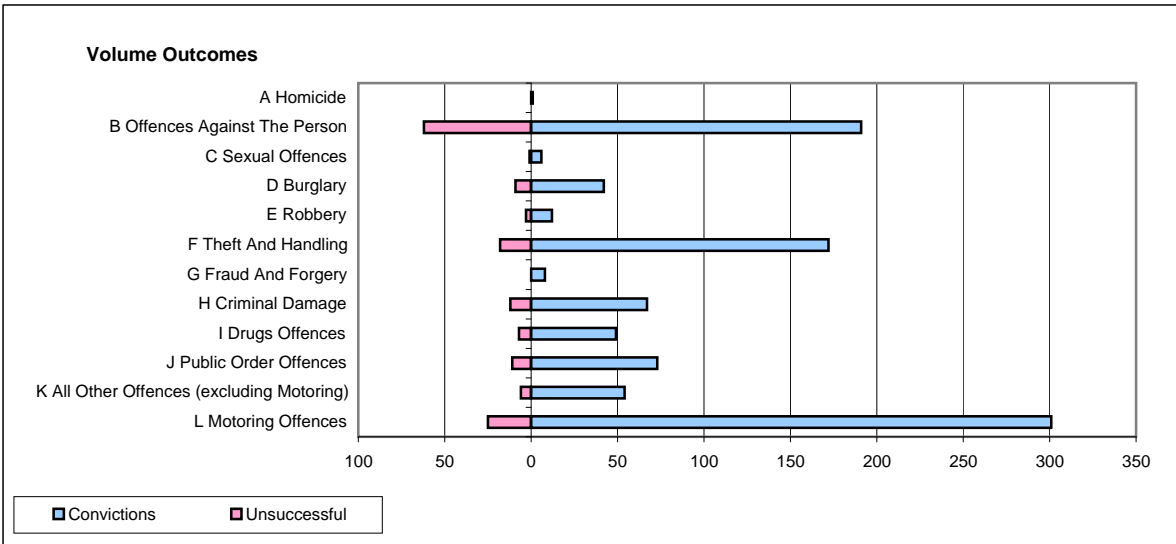
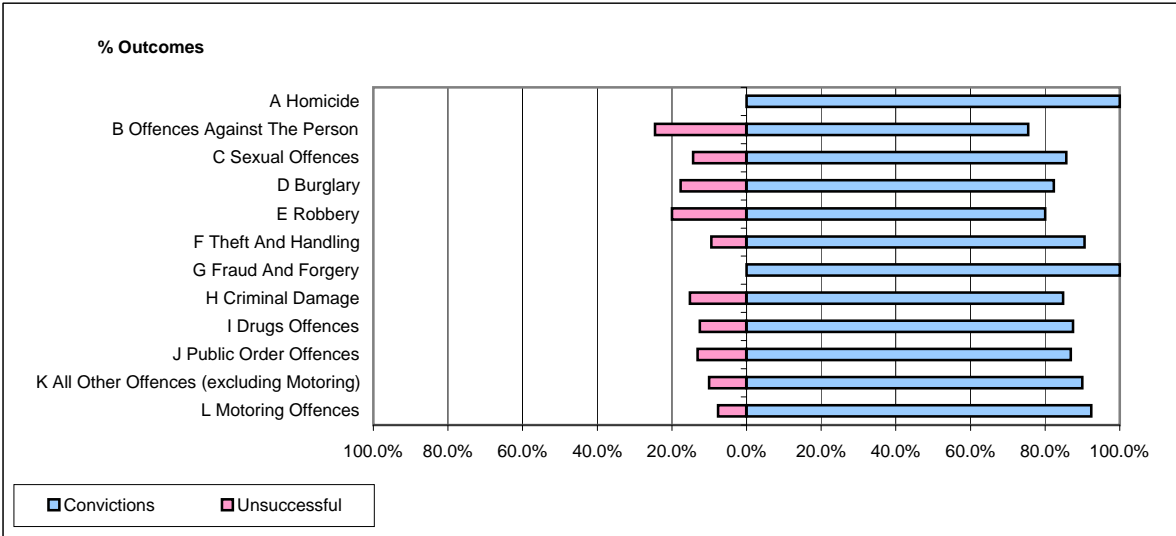


CPS OUTCOMES BY PRINCIPAL OFFENCE CATEGORY

December 2008

P08-Derbyshire



	Convictions		Unsuccessful	
	Number of Defendants	%	Number of Defendants	%
A Homicide	1	100.0%	0	0.0%
B Offences Against The Person	191	75.5%	62	24.5%
C Sexual Offences	6	85.7%	1	14.3%
D Burglary	42	82.4%	9	17.6%
E Robbery	12	80.0%	3	20.0%
F Theft And Handling	172	90.5%	18	9.5%
G Fraud And Forgery	8	100.0%	0	0.0%
H Criminal Damage	67	84.8%	12	15.2%
I Drugs Offences	49	87.5%	7	12.5%
J Public Order Offences	73	86.9%	11	13.1%
K All Other Offences (excluding Motoring)	54	90.0%	6	10.0%
L Motoring Offences	301	92.3%	25	7.7%
Admin Finalisations	0	0.0%	17	100.0%
TOTAL	976	85.1%	171	14.9%