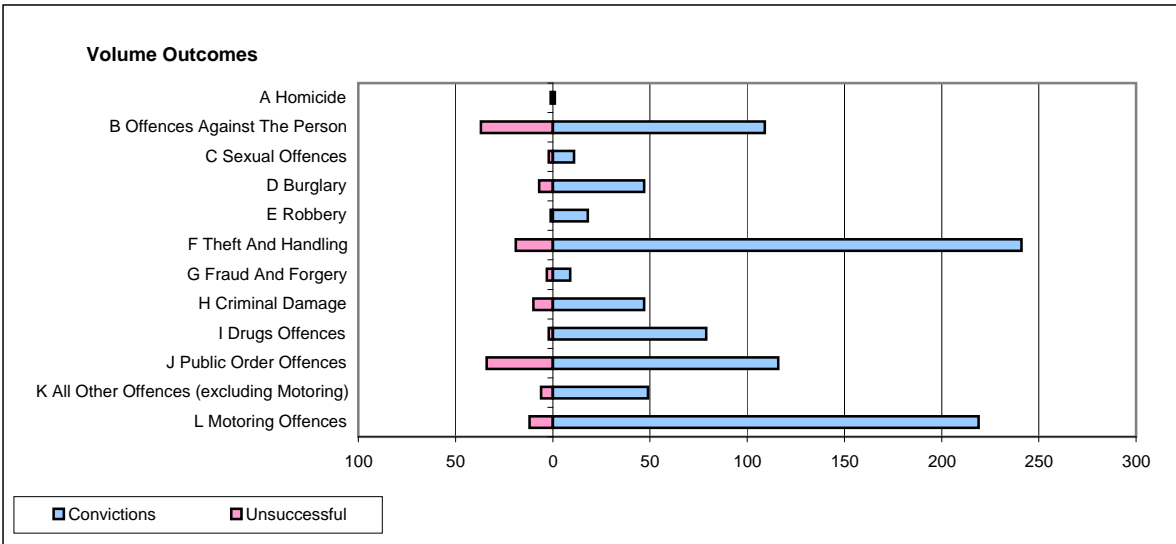
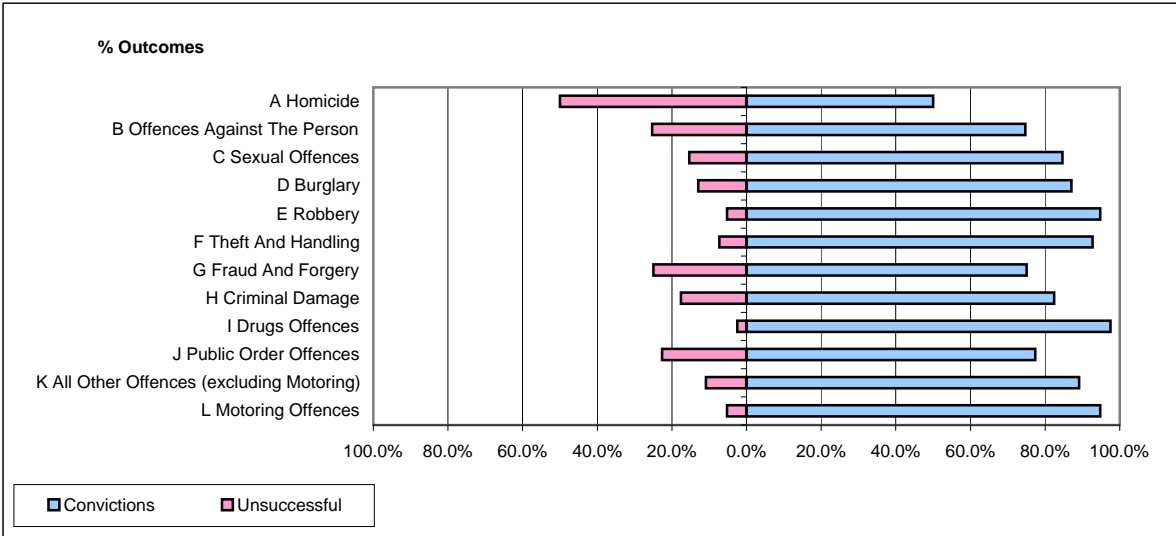


CPS OUTCOMES BY PRINCIPAL OFFENCE CATEGORY

December 2008

P06-Cleveland



	Convictions		Unsuccessful	
	Number of Defendants	%	Number of Defendants	%
A Homicide	1	50.0%	1	50.0%
B Offences Against The Person	109	74.7%	37	25.3%
C Sexual Offences	11	84.6%	2	15.4%
D Burglary	47	87.0%	7	13.0%
E Robbery	18	94.7%	1	5.3%
F Theft And Handling	241	92.7%	19	7.3%
G Fraud And Forgery	9	75.0%	3	25.0%
H Criminal Damage	47	82.5%	10	17.5%
I Drugs Offences	79	97.5%	2	2.5%
J Public Order Offences	116	77.3%	34	22.7%
K All Other Offences (excluding Motoring)	49	89.1%	6	10.9%
L Motoring Offences	219	94.8%	12	5.2%
Admin Finalisations	0	0.0%	6	100.0%
TOTAL	946	87.1%	140	12.9%