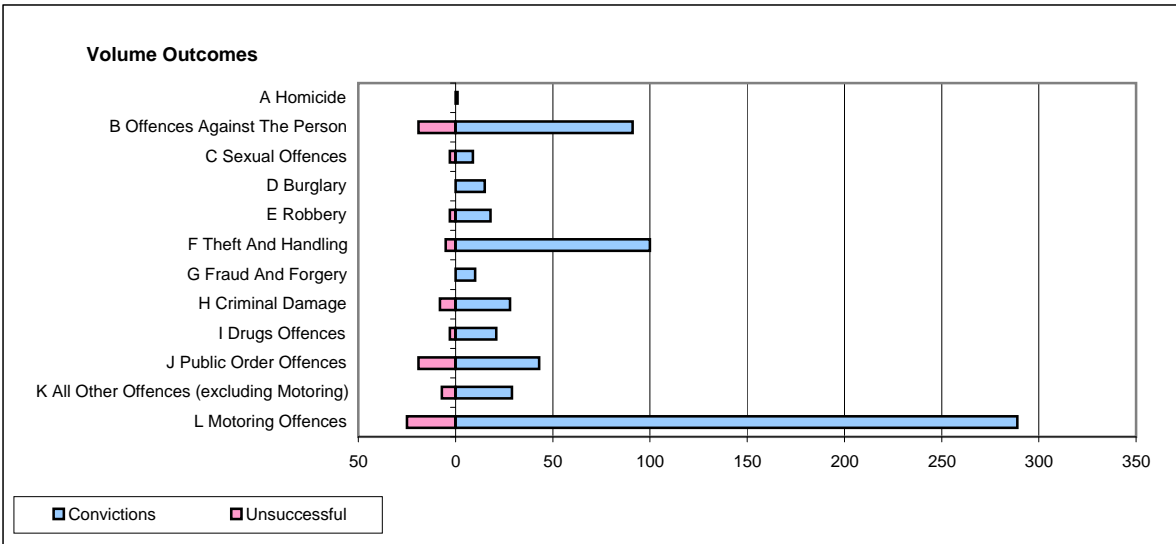
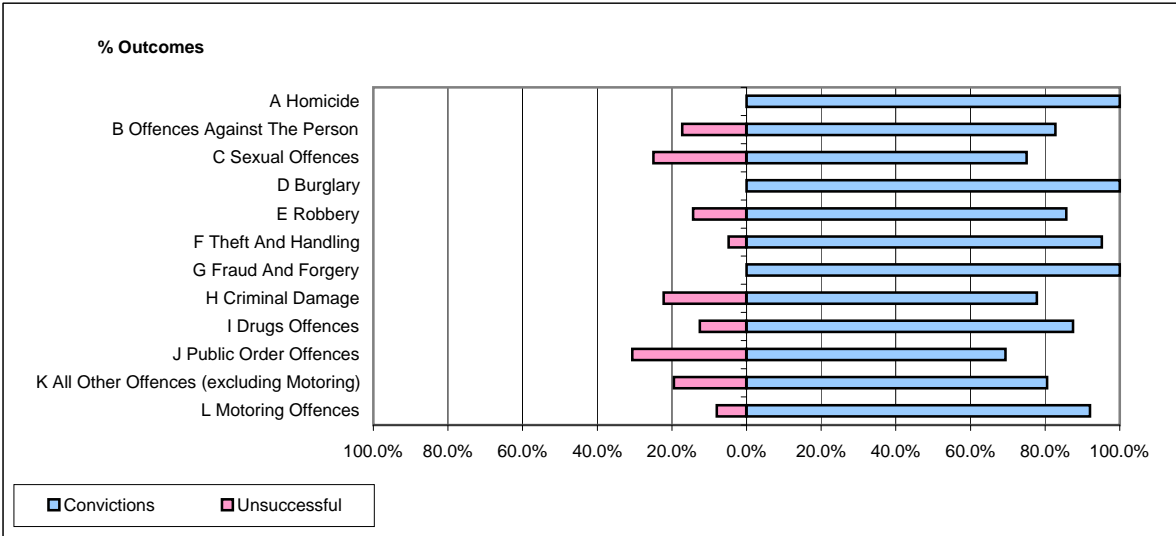


**CPS OUTCOMES BY PRINCIPAL OFFENCE CATEGORY**

**December 2008**

**P02-Bedfordshire**



	Convictions		Unsuccessful	
	Number of Defendants	%	Number of Defendants	%
<b>A Homicide</b>	1	100.0%	0	0.0%
<b>B Offences Against The Person</b>	91	82.7%	19	17.3%
<b>C Sexual Offences</b>	9	75.0%	3	25.0%
<b>D Burglary</b>	15	100.0%	0	0.0%
<b>E Robbery</b>	18	85.7%	3	14.3%
<b>F Theft And Handling</b>	100	95.2%	5	4.8%
<b>G Fraud And Forgery</b>	10	100.0%	0	0.0%
<b>H Criminal Damage</b>	28	77.8%	8	22.2%
<b>I Drugs Offences</b>	21	87.5%	3	12.5%
<b>J Public Order Offences</b>	43	69.4%	19	30.6%
<b>K All Other Offences (excluding Motoring)</b>	29	80.6%	7	19.4%
<b>L Motoring Offences</b>	289	92.0%	25	8.0%
<b>Admin Finalisations</b>	0	0.0%	6	100.0%
<b>TOTAL</b>	654	87.0%	98	13.0%