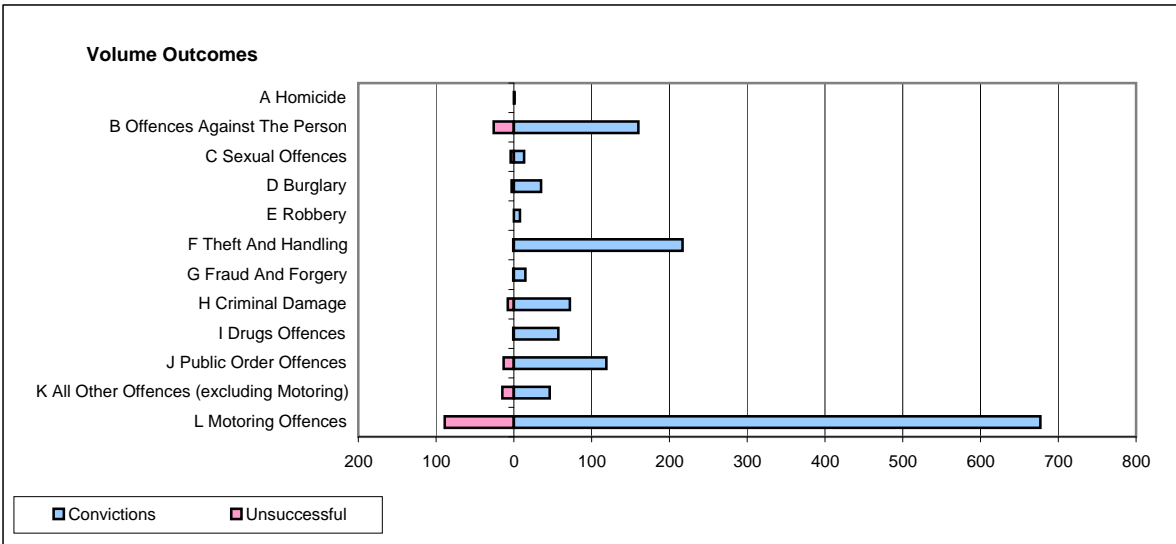
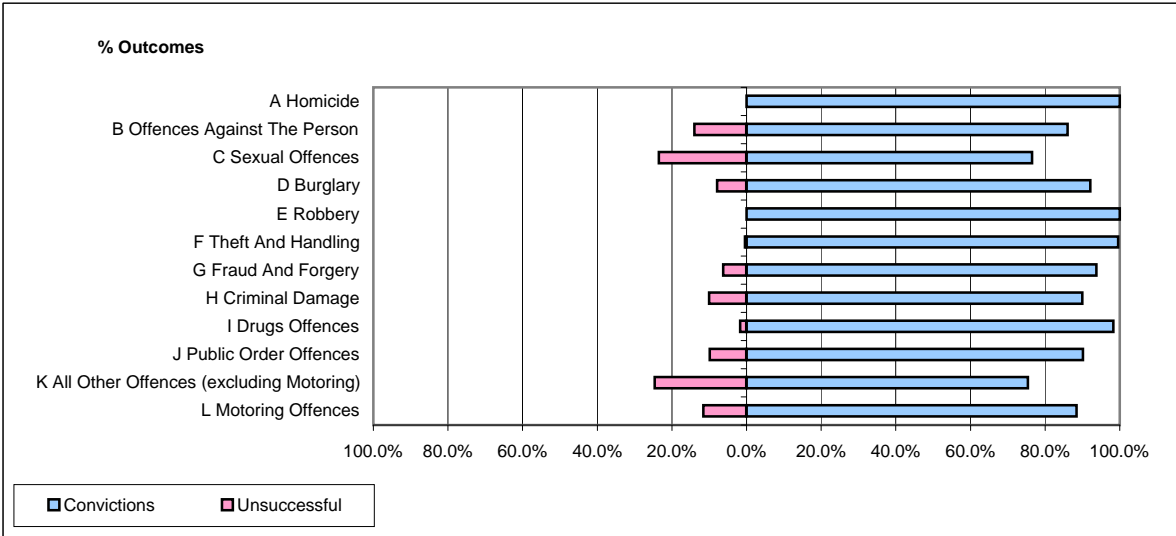


CPS OUTCOMES BY PRINCIPAL OFFENCE CATEGORY

November 2008

P40-WestMercia



	Convictions		Unsuccessful	
	Number of Defendants	%	Number of Defendants	%
A Homicide	1	100.0%	0	0.0%
B Offences Against The Person	160	86.0%	26	14.0%
C Sexual Offences	13	76.5%	4	23.5%
D Burglary	35	92.1%	3	7.9%
E Robbery	8	100.0%	0	0.0%
F Theft And Handling	217	99.5%	1	0.5%
G Fraud And Forgery	15	93.8%	1	6.3%
H Criminal Damage	72	90.0%	8	10.0%
I Drugs Offences	57	98.3%	1	1.7%
J Public Order Offences	119	90.2%	13	9.8%
K All Other Offences (excluding Motoring)	46	75.4%	15	24.6%
L Motoring Offences	677	88.4%	89	11.6%
Admin Finalisations	0	0.0%	16	100.0%
TOTAL	1,420	88.9%	177	11.1%