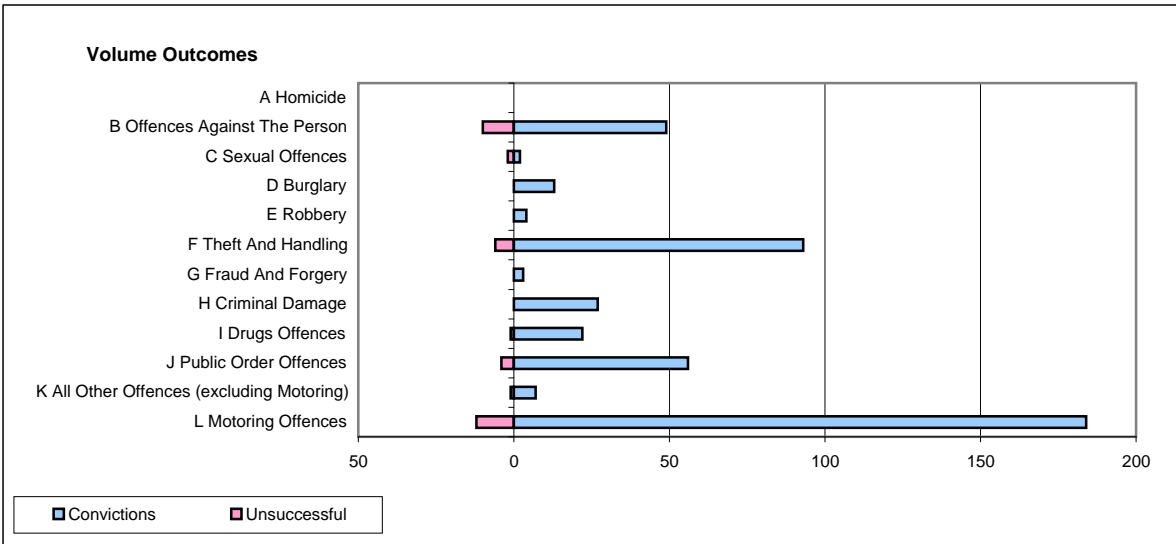
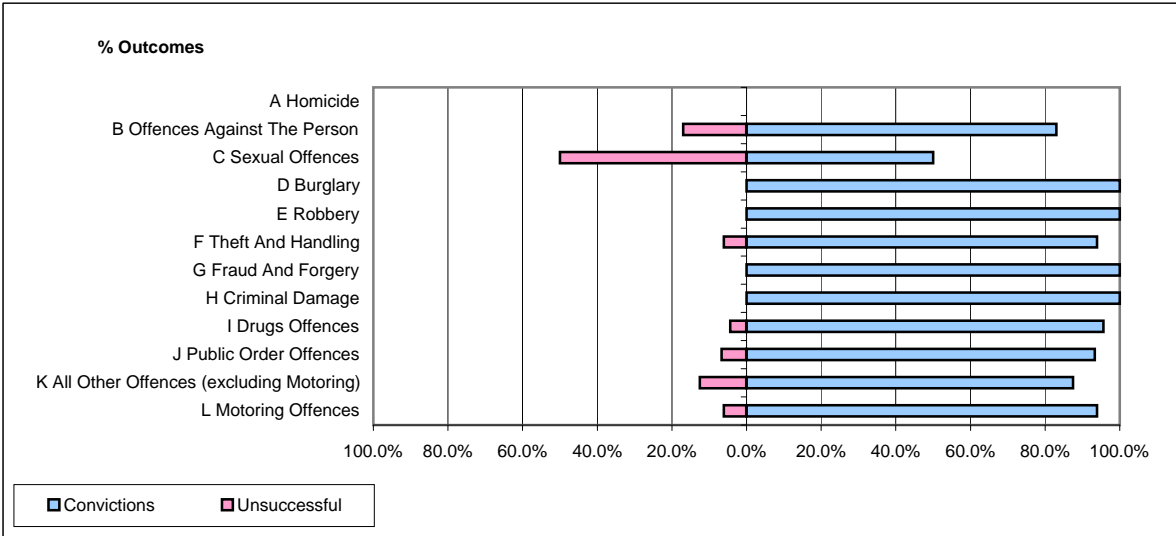


CPS OUTCOMES BY PRINCIPAL OFFENCE CATEGORY

November 2008

P39-Warwickshire



	Convictions		Unsuccessful	
	Number of Defendants	%	Number of Defendants	%
A Homicide	0	0	0	0
B Offences Against The Person	49	83.1%	10	16.9%
C Sexual Offences	2	50.0%	2	50.0%
D Burglary	13	100.0%	0	0.0%
E Robbery	4	100.0%	0	0.0%
F Theft And Handling	93	93.9%	6	6.1%
G Fraud And Forgery	3	100.0%	0	0.0%
H Criminal Damage	27	100.0%	0	0.0%
I Drugs Offences	22	95.7%	1	4.3%
J Public Order Offences	56	93.3%	4	6.7%
K All Other Offences (excluding Motoring)	7	87.5%	1	12.5%
L Motoring Offences	184	93.9%	12	6.1%
Admin Finalisations	0	0.0%	7	100.0%
TOTAL	460	91.5%	43	8.5%