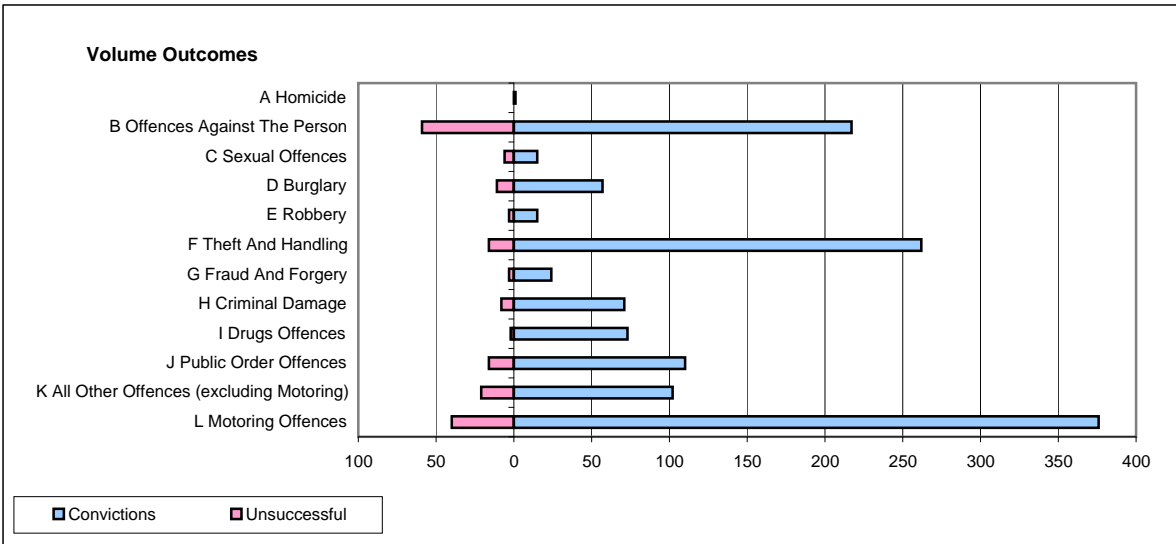
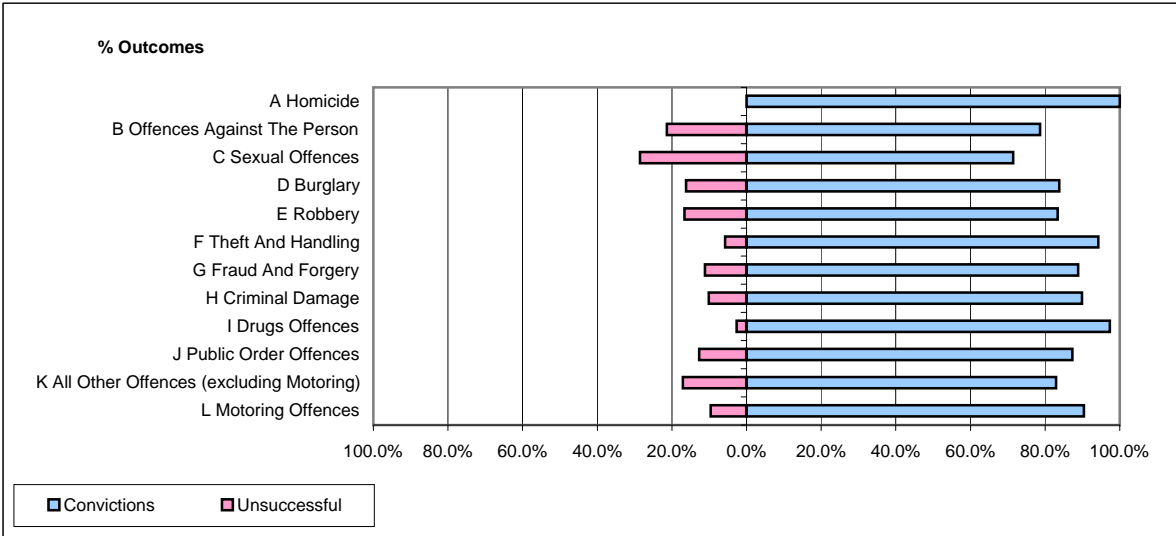


CPS OUTCOMES BY PRINCIPAL OFFENCE CATEGORY

November 2008

P37-Sussex



	Convictions		Unsuccessful	
	Number of Defendants	%	Number of Defendants	%
A Homicide	1	100.0%	0	0.0%
B Offences Against The Person	217	78.6%	59	21.4%
C Sexual Offences	15	71.4%	6	28.6%
D Burglary	57	83.8%	11	16.2%
E Robbery	15	83.3%	3	16.7%
F Theft And Handling	262	94.2%	16	5.8%
G Fraud And Forgery	24	88.9%	3	11.1%
H Criminal Damage	71	89.9%	8	10.1%
I Drugs Offences	73	97.3%	2	2.7%
J Public Order Offences	110	87.3%	16	12.7%
K All Other Offences (excluding Motoring)	102	82.9%	21	17.1%
L Motoring Offences	376	90.4%	40	9.6%
Admin Finalisations	0	0.0%	33	100.0%
TOTAL	1,323	85.9%	218	14.1%