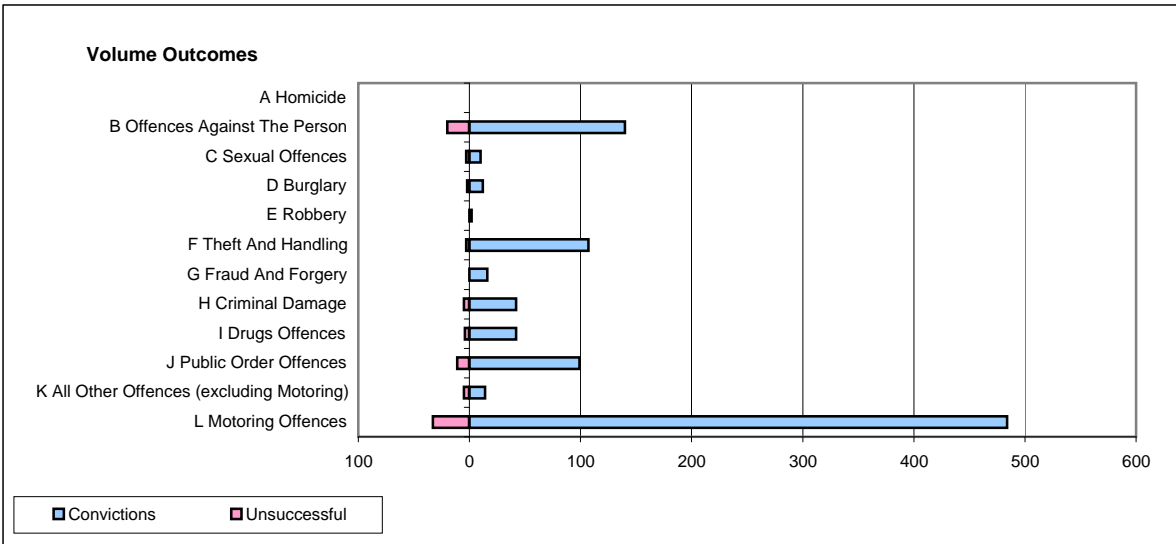
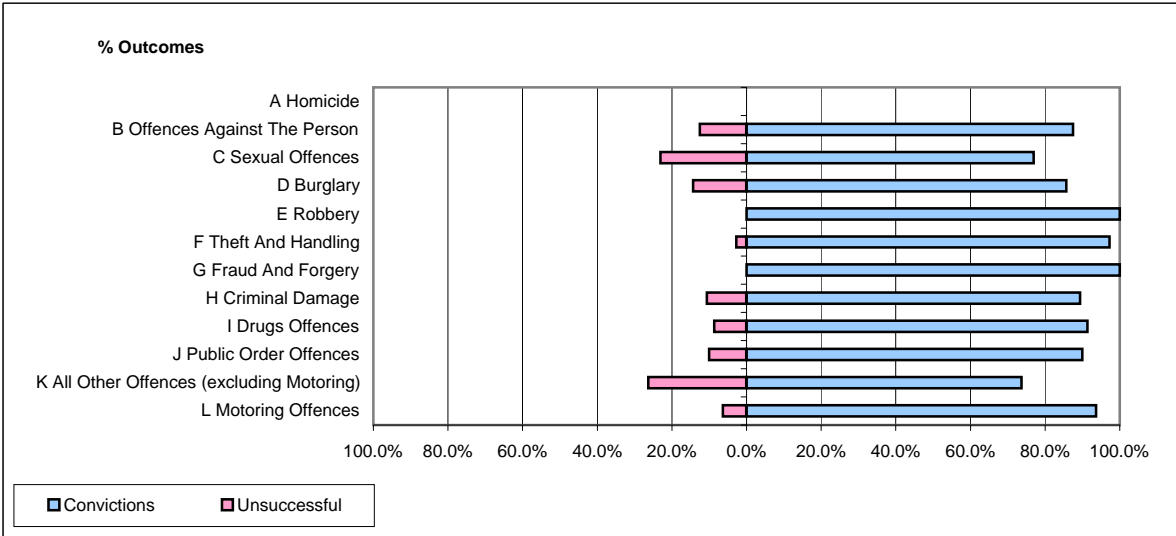


CPS OUTCOMES BY PRINCIPAL OFFENCE CATEGORY

November 2008

P35-Suffolk



	Convictions		Unsuccessful	
	Number of Defendants	%	Number of Defendants	%
A Homicide	0	0	0	0
B Offences Against The Person	140	87.5%	20	12.5%
C Sexual Offences	10	76.9%	3	23.1%
D Burglary	12	85.7%	2	14.3%
E Robbery	2	100.0%	0	0.0%
F Theft And Handling	107	97.3%	3	2.7%
G Fraud And Forgery	16	100.0%	0	0.0%
H Criminal Damage	42	89.4%	5	10.6%
I Drugs Offences	42	91.3%	4	8.7%
J Public Order Offences	99	90.0%	11	10.0%
K All Other Offences (excluding Motoring)	14	73.7%	5	26.3%
L Motoring Offences	484	93.6%	33	6.4%
Admin Finalisations	0	0.0%	8	100.0%
TOTAL	968	91.1%	94	8.9%