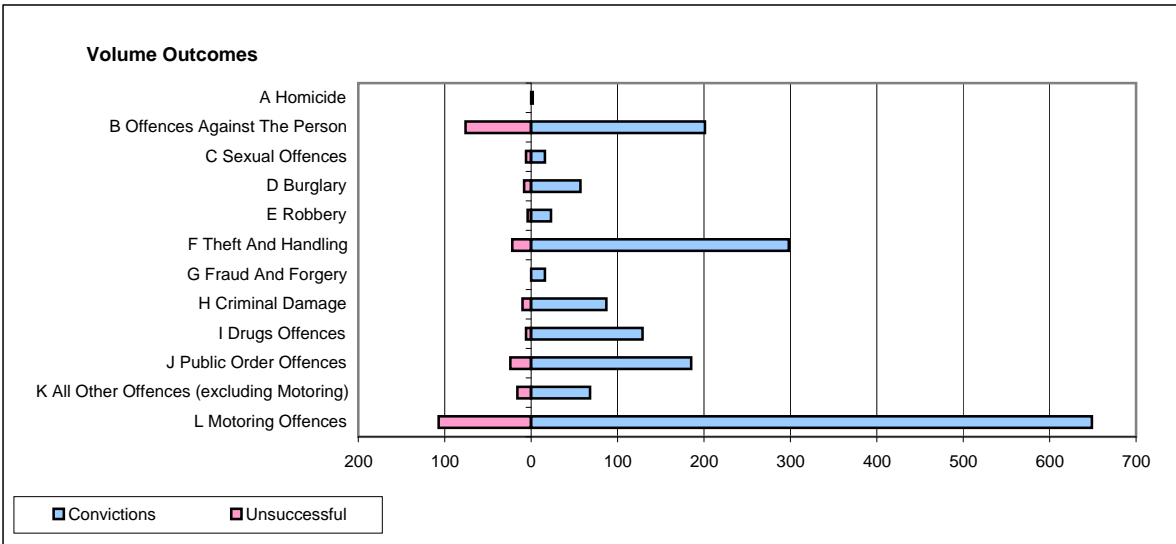
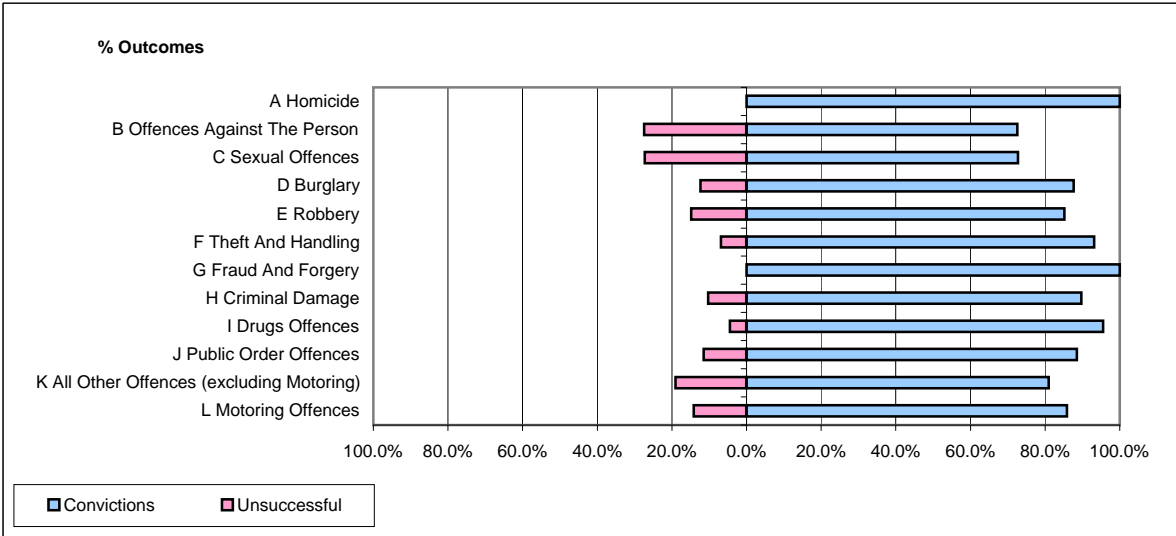


CPS OUTCOMES BY PRINCIPAL OFFENCE CATEGORY

November 2008

P32-SouthWales



	Convictions		Unsuccessful	
	Number of Defendants	%	Number of Defendants	%
A Homicide	2	100.0%	0	0.0%
B Offences Against The Person	201	72.6%	76	27.4%
C Sexual Offences	16	72.7%	6	27.3%
D Burglary	57	87.7%	8	12.3%
E Robbery	23	85.2%	4	14.8%
F Theft And Handling	298	93.1%	22	6.9%
G Fraud And Forgery	16	100.0%	0	0.0%
H Criminal Damage	87	89.7%	10	10.3%
I Drugs Offences	129	95.6%	6	4.4%
J Public Order Offences	185	88.5%	24	11.5%
K All Other Offences (excluding Motoring)	68	81.0%	16	19.0%
L Motoring Offences	649	85.8%	107	14.2%
Admin Finalisations	0	0.0%	36	100.0%
TOTAL	1,731	84.6%	315	15.4%