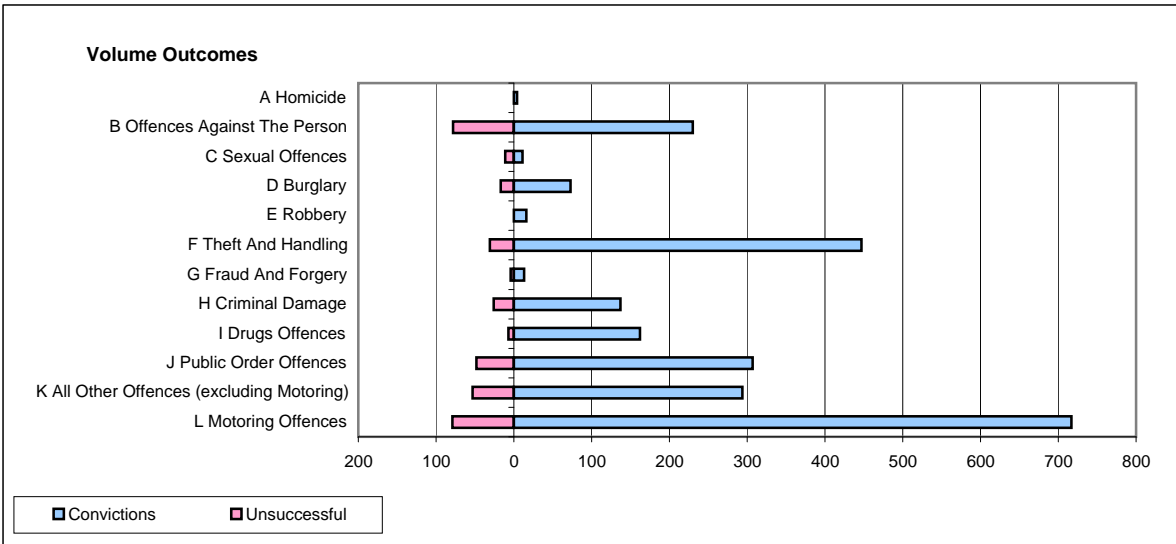
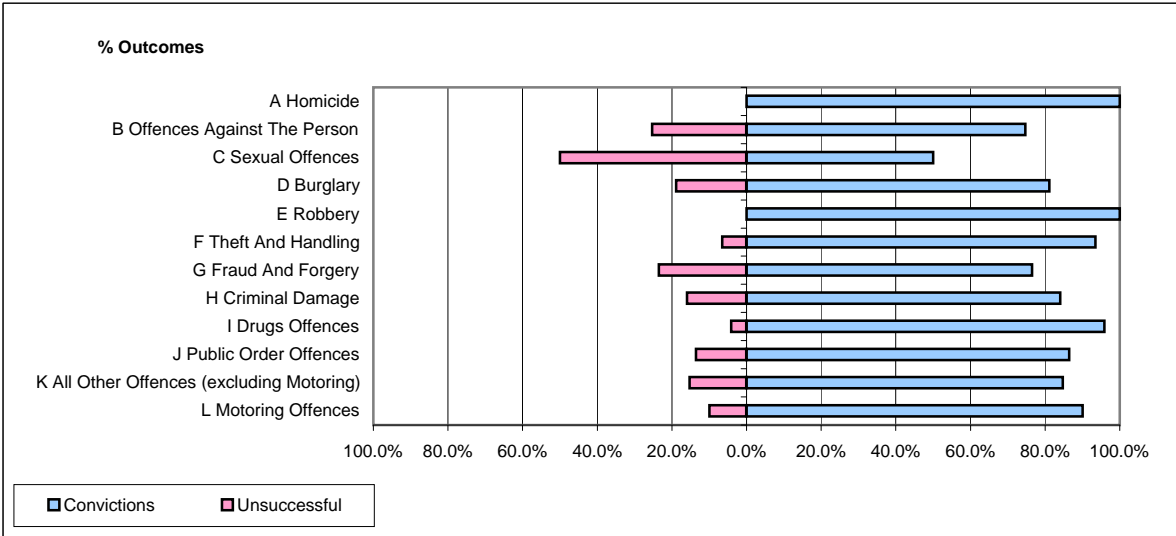


**CPS OUTCOMES BY PRINCIPAL OFFENCE CATEGORY**

**November 2008**

**P28-Northumbria**



	Convictions		Unsuccessful	
	Number of Defendants	%	Number of Defendants	%
<b>A Homicide</b>	<b>4</b>	<b>100.0%</b>	<b>0</b>	<b>0.0%</b>
<b>B Offences Against The Person</b>	<b>230</b>	<b>74.7%</b>	<b>78</b>	<b>25.3%</b>
<b>C Sexual Offences</b>	<b>11</b>	<b>50.0%</b>	<b>11</b>	<b>50.0%</b>
<b>D Burglary</b>	<b>73</b>	<b>81.1%</b>	<b>17</b>	<b>18.9%</b>
<b>E Robbery</b>	<b>16</b>	<b>100.0%</b>	<b>0</b>	<b>0.0%</b>
<b>F Theft And Handling</b>	<b>447</b>	<b>93.5%</b>	<b>31</b>	<b>6.5%</b>
<b>G Fraud And Forgery</b>	<b>13</b>	<b>76.5%</b>	<b>4</b>	<b>23.5%</b>
<b>H Criminal Damage</b>	<b>137</b>	<b>84.0%</b>	<b>26</b>	<b>16.0%</b>
<b>I Drugs Offences</b>	<b>162</b>	<b>95.9%</b>	<b>7</b>	<b>4.1%</b>
<b>J Public Order Offences</b>	<b>307</b>	<b>86.5%</b>	<b>48</b>	<b>13.5%</b>
<b>K All Other Offences (excluding Motoring)</b>	<b>294</b>	<b>84.7%</b>	<b>53</b>	<b>15.3%</b>
<b>L Motoring Offences</b>	<b>717</b>	<b>90.1%</b>	<b>79</b>	<b>9.9%</b>
<b>Admin Finalisations</b>	<b>0</b>	<b>0.0%</b>	<b>33</b>	<b>100.0%</b>
<b>TOTAL</b>	<b>2,411</b>	<b>86.2%</b>	<b>387</b>	<b>13.8%</b>