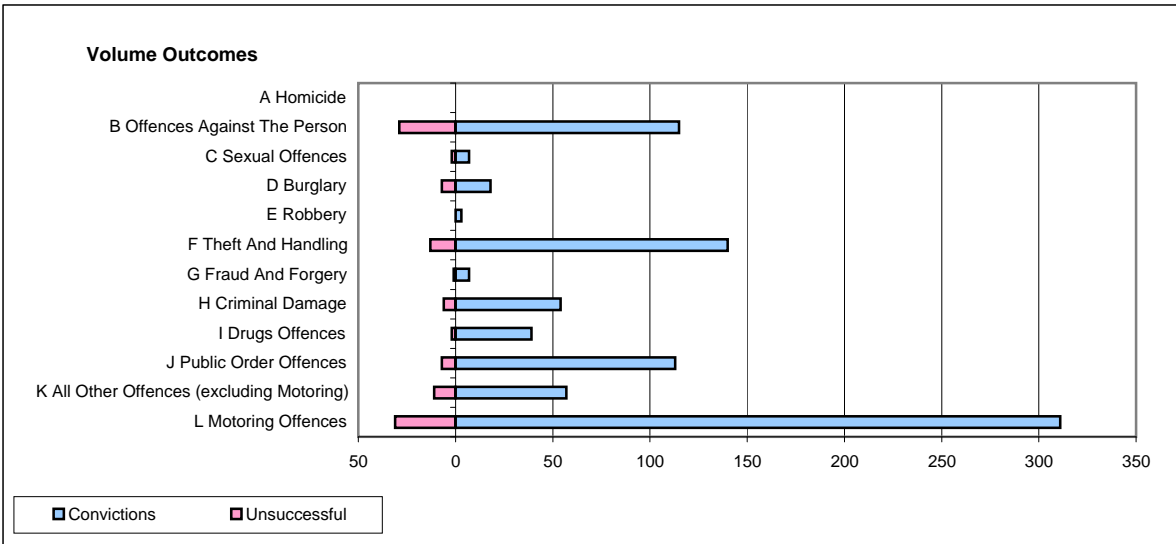
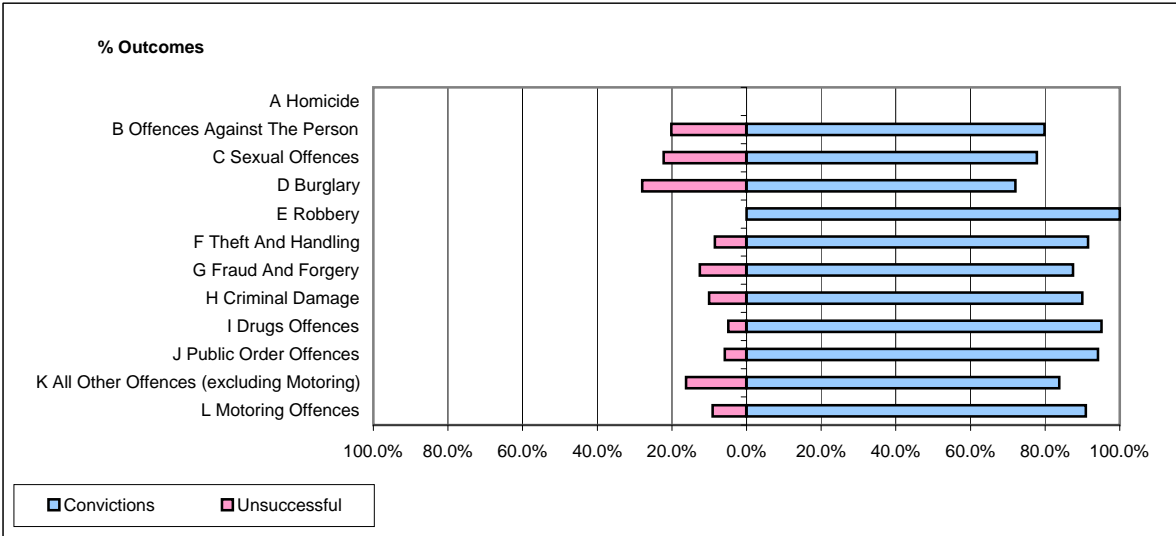


CPS OUTCOMES BY PRINCIPAL OFFENCE CATEGORY

November 2008

P29-NorthWales



	Convictions		Unsuccessful	
	Number of Defendants	%	Number of Defendants	%
A Homicide	0	0	0	0
B Offences Against The Person	115	79.9%	29	20.1%
C Sexual Offences	7	77.8%	2	22.2%
D Burglary	18	72.0%	7	28.0%
E Robbery	3	100.0%	0	0.0%
F Theft And Handling	140	91.5%	13	8.5%
G Fraud And Forgery	7	87.5%	1	12.5%
H Criminal Damage	54	90.0%	6	10.0%
I Drugs Offences	39	95.1%	2	4.9%
J Public Order Offences	113	94.2%	7	5.8%
K All Other Offences (excluding Motoring)	57	83.8%	11	16.2%
L Motoring Offences	311	90.9%	31	9.1%
Admin Finalisations	0	0.0%	5	100.0%
TOTAL	864	88.3%	114	11.7%