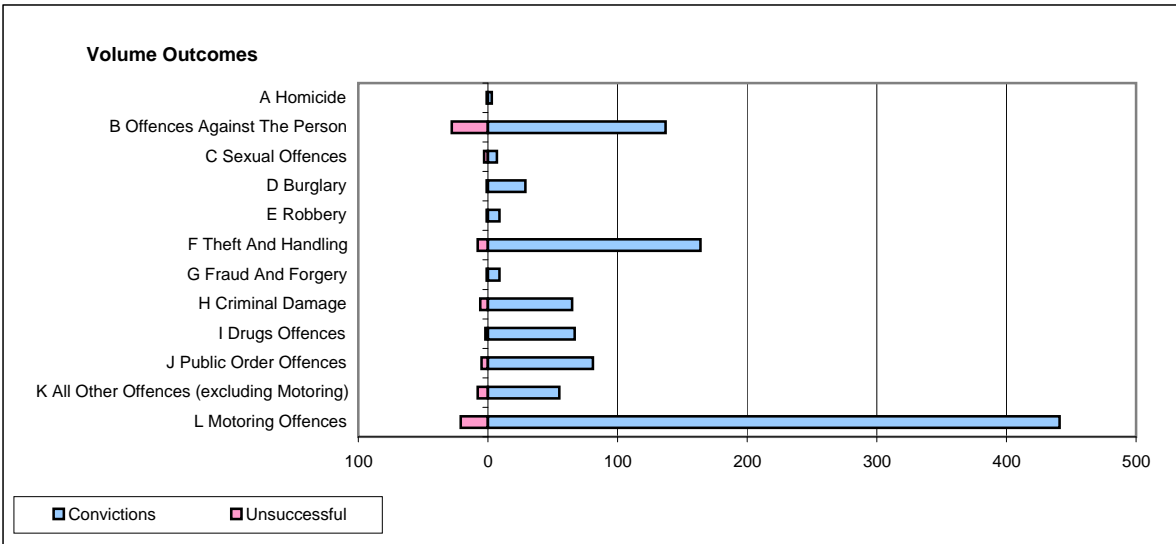
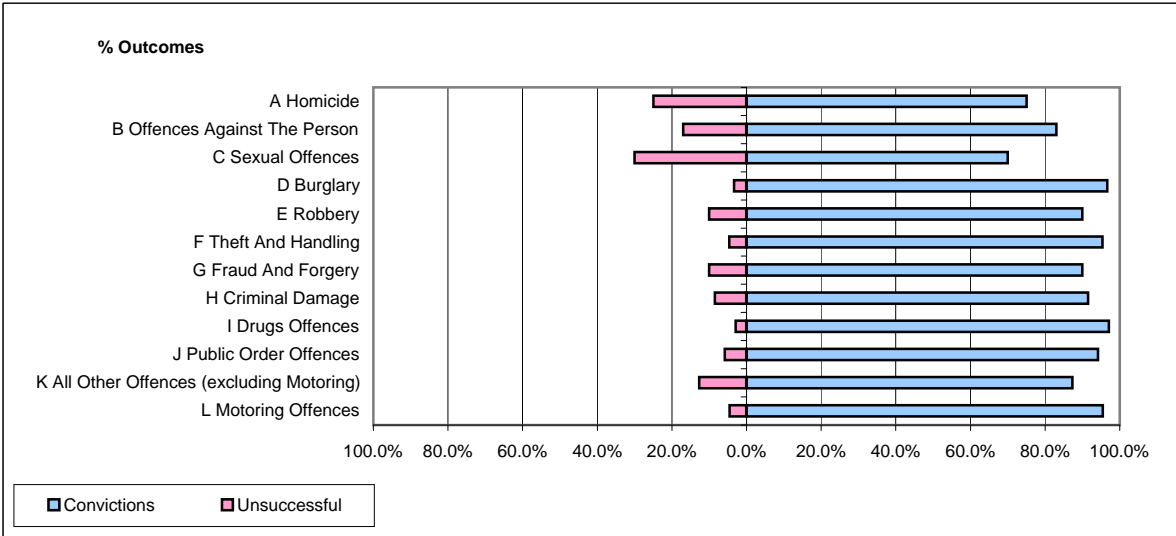


CPS OUTCOMES BY PRINCIPAL OFFENCE CATEGORY

November 2008

P26-Norfolk



	Convictions		Unsuccessful	
	Number of Defendants	%	Number of Defendants	%
A Homicide	3	75.0%	1	25.0%
B Offences Against The Person	137	83.0%	28	17.0%
C Sexual Offences	7	70.0%	3	30.0%
D Burglary	29	96.7%	1	3.3%
E Robbery	9	90.0%	1	10.0%
F Theft And Handling	164	95.3%	8	4.7%
G Fraud And Forgery	9	90.0%	1	10.0%
H Criminal Damage	65	91.5%	6	8.5%
I Drugs Offences	67	97.1%	2	2.9%
J Public Order Offences	81	94.2%	5	5.8%
K All Other Offences (excluding Motoring)	55	87.3%	8	12.7%
L Motoring Offences	441	95.5%	21	4.5%
Admin Finalisations	0	0.0%	16	100.0%
TOTAL	1,067	91.4%	101	8.6%