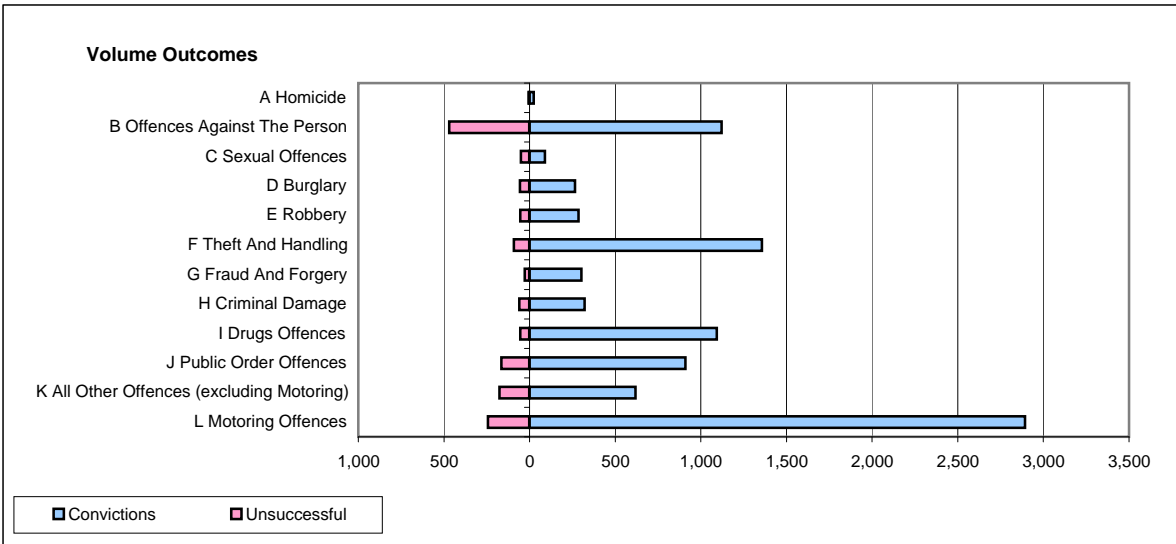
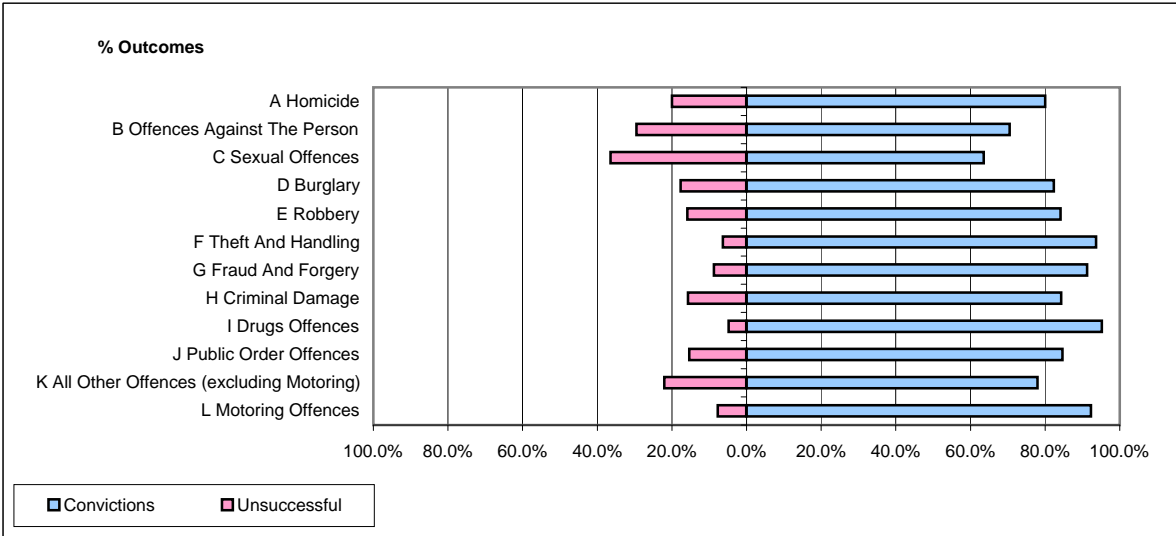


**CPS OUTCOMES BY PRINCIPAL OFFENCE CATEGORY**

**November 2008**

**P25-Metropolitan&City**



	Convictions		Unsuccessful	
	Number of Defendants	%	Number of Defendants	%
<b>A Homicide</b>	<b>24</b>	<b>80.0%</b>	<b>6</b>	<b>20.0%</b>
<b>B Offences Against The Person</b>	<b>1,121</b>	<b>70.5%</b>	<b>469</b>	<b>29.5%</b>
<b>C Sexual Offences</b>	<b>89</b>	<b>63.6%</b>	<b>51</b>	<b>36.4%</b>
<b>D Burglary</b>	<b>266</b>	<b>82.4%</b>	<b>57</b>	<b>17.6%</b>
<b>E Robbery</b>	<b>286</b>	<b>84.1%</b>	<b>54</b>	<b>15.9%</b>
<b>F Theft And Handling</b>	<b>1,357</b>	<b>93.7%</b>	<b>92</b>	<b>6.3%</b>
<b>G Fraud And Forgery</b>	<b>302</b>	<b>91.2%</b>	<b>29</b>	<b>8.8%</b>
<b>H Criminal Damage</b>	<b>322</b>	<b>84.3%</b>	<b>60</b>	<b>15.7%</b>
<b>I Drugs Offences</b>	<b>1,093</b>	<b>95.2%</b>	<b>55</b>	<b>4.8%</b>
<b>J Public Order Offences</b>	<b>910</b>	<b>84.7%</b>	<b>165</b>	<b>15.3%</b>
<b>K All Other Offences (excluding Motoring)</b>	<b>619</b>	<b>78.0%</b>	<b>175</b>	<b>22.0%</b>
<b>L Motoring Offences</b>	<b>2,892</b>	<b>92.2%</b>	<b>243</b>	<b>7.8%</b>
<b>Admin Finalisations</b>	<b>0</b>	<b>0.0%</b>	<b>336</b>	<b>100.0%</b>
<b>TOTAL</b>	<b>9,281</b>	<b>83.8%</b>	<b>1,792</b>	<b>16.2%</b>