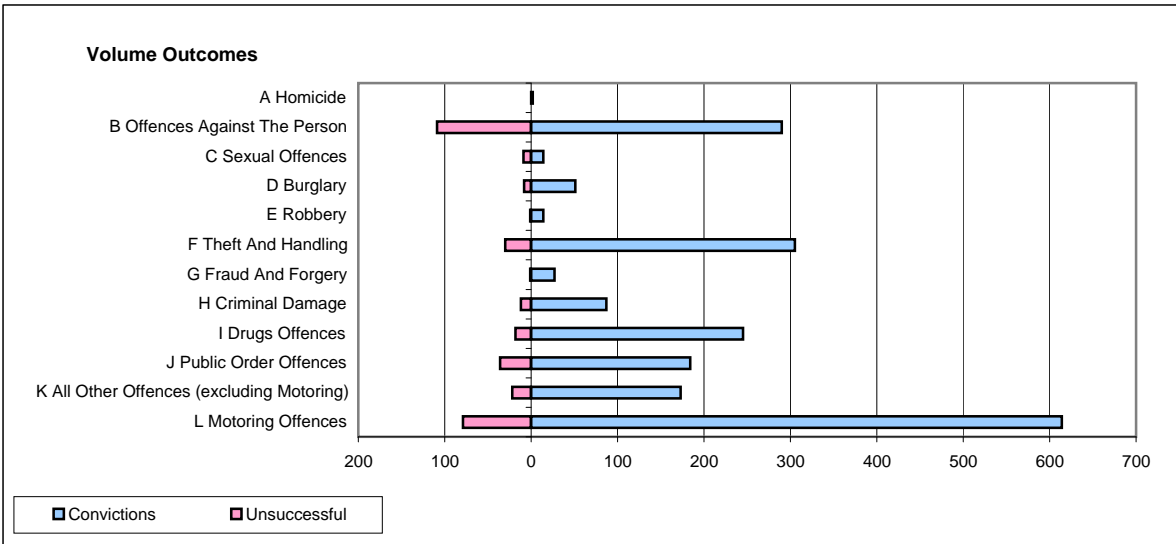
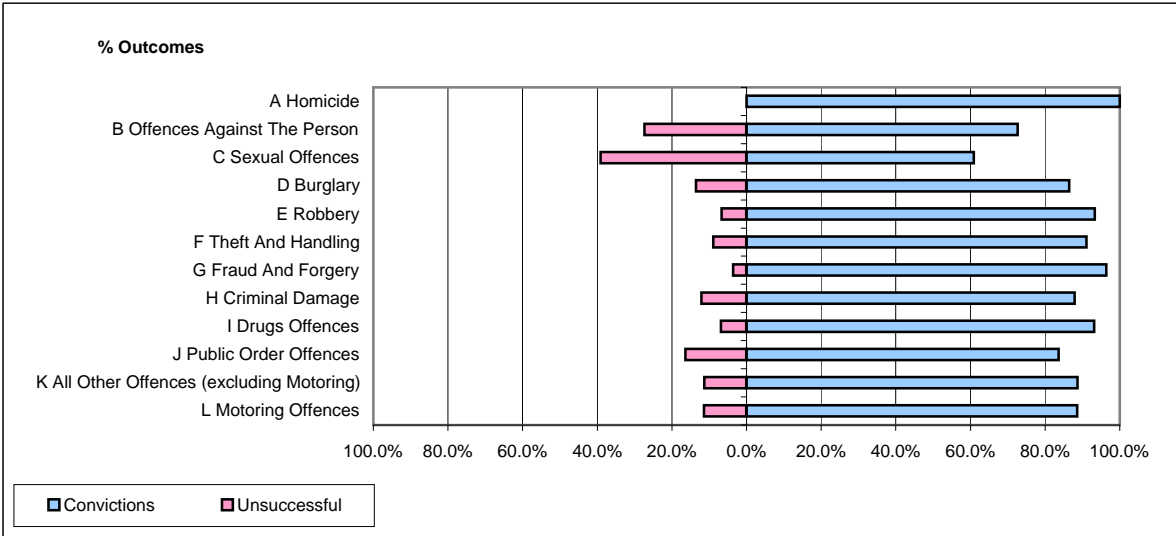


CPS OUTCOMES BY PRINCIPAL OFFENCE CATEGORY

November 2008

P24-Merseyside



	Convictions		Unsuccessful	
	Number of Defendants	%	Number of Defendants	%
A Homicide	2	100.0%	0	0.0%
B Offences Against The Person	290	72.7%	109	27.3%
C Sexual Offences	14	60.9%	9	39.1%
D Burglary	51	86.4%	8	13.6%
E Robbery	14	93.3%	1	6.7%
F Theft And Handling	305	91.0%	30	9.0%
G Fraud And Forgery	27	96.4%	1	3.6%
H Criminal Damage	87	87.9%	12	12.1%
I Drugs Offences	245	93.2%	18	6.8%
J Public Order Offences	184	83.6%	36	16.4%
K All Other Offences (excluding Motoring)	173	88.7%	22	11.3%
L Motoring Offences	614	88.6%	79	11.4%
Admin Finalisations	0	0.0%	30	100.0%
TOTAL	2,006	85.0%	355	15.0%