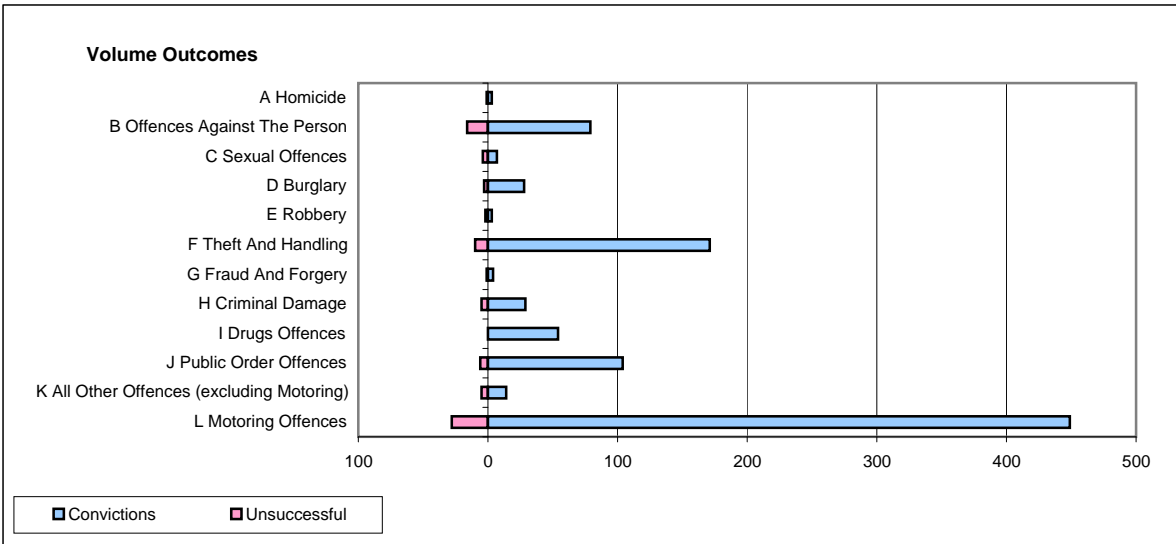
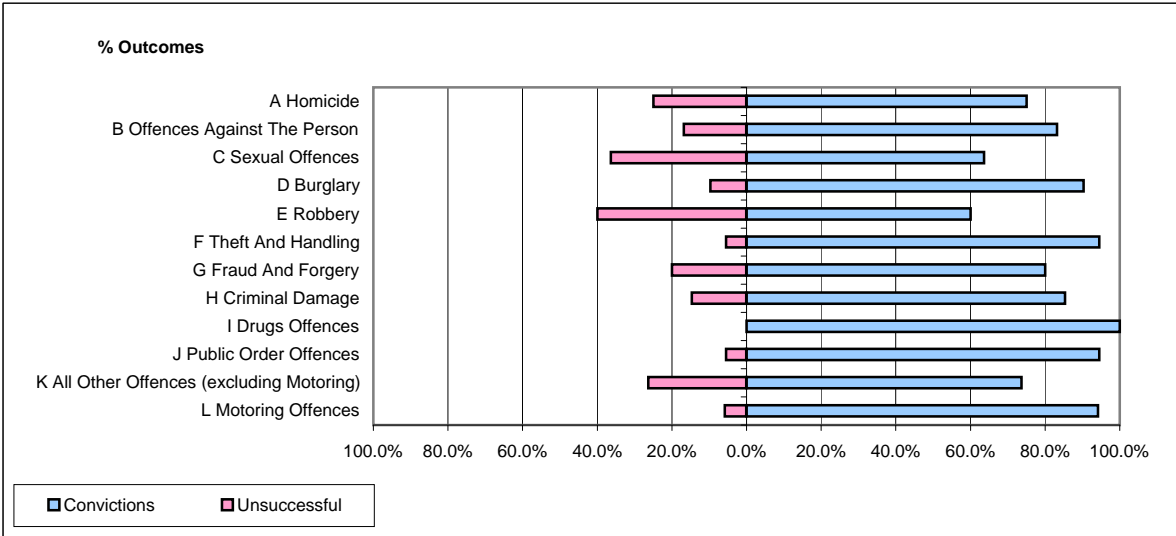


**CPS OUTCOMES BY PRINCIPAL OFFENCE CATEGORY**

**November 2008**

**P23-Lincolnshire**



	Convictions		Unsuccessful	
	Number of Defendants	%	Number of Defendants	%
<b>A Homicide</b>	<b>3</b>	<b>75.0%</b>	<b>1</b>	<b>25.0%</b>
<b>B Offences Against The Person</b>	<b>79</b>	<b>83.2%</b>	<b>16</b>	<b>16.8%</b>
<b>C Sexual Offences</b>	<b>7</b>	<b>63.6%</b>	<b>4</b>	<b>36.4%</b>
<b>D Burglary</b>	<b>28</b>	<b>90.3%</b>	<b>3</b>	<b>9.7%</b>
<b>E Robbery</b>	<b>3</b>	<b>60.0%</b>	<b>2</b>	<b>40.0%</b>
<b>F Theft And Handling</b>	<b>171</b>	<b>94.5%</b>	<b>10</b>	<b>5.5%</b>
<b>G Fraud And Forgery</b>	<b>4</b>	<b>80.0%</b>	<b>1</b>	<b>20.0%</b>
<b>H Criminal Damage</b>	<b>29</b>	<b>85.3%</b>	<b>5</b>	<b>14.7%</b>
<b>I Drugs Offences</b>	<b>54</b>	<b>100.0%</b>	<b>0</b>	<b>0.0%</b>
<b>J Public Order Offences</b>	<b>104</b>	<b>94.5%</b>	<b>6</b>	<b>5.5%</b>
<b>K All Other Offences (excluding Motoring)</b>	<b>14</b>	<b>73.7%</b>	<b>5</b>	<b>26.3%</b>
<b>L Motoring Offences</b>	<b>449</b>	<b>94.1%</b>	<b>28</b>	<b>5.9%</b>
<b>Admin Finalisations</b>	<b>0</b>	<b>0.0%</b>	<b>10</b>	<b>100.0%</b>
<b>TOTAL</b>	<b>945</b>	<b>91.2%</b>	<b>91</b>	<b>8.8%</b>