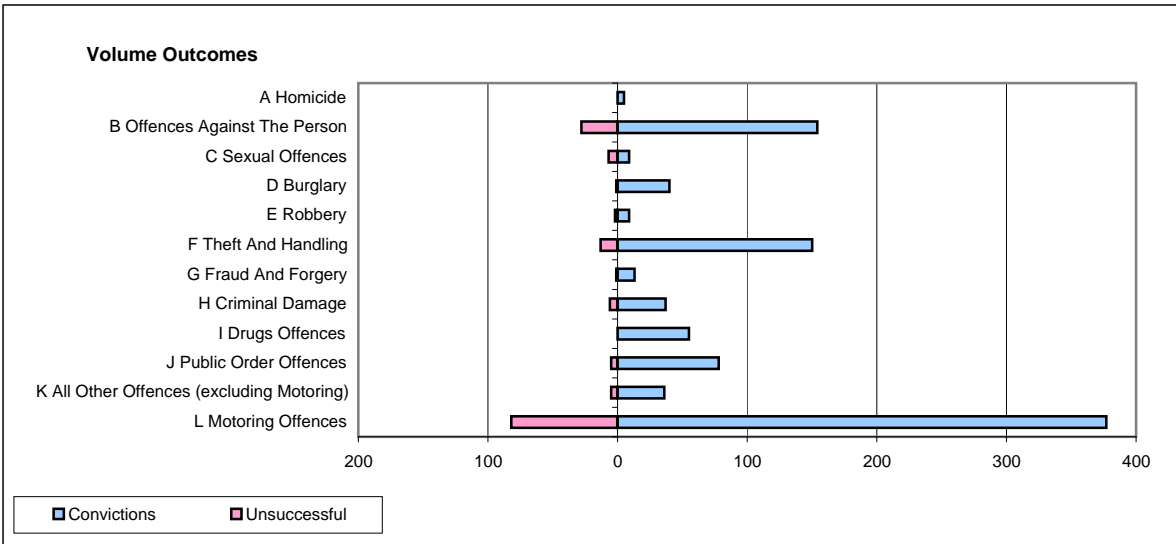
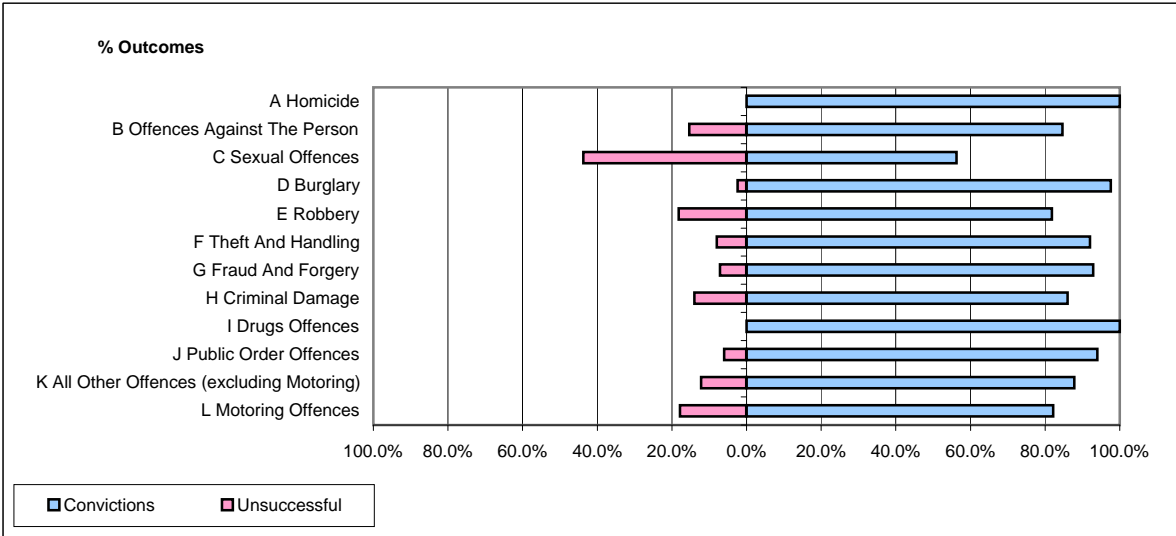


CPS OUTCOMES BY PRINCIPAL OFFENCE CATEGORY

November 2008

P22-Leicestershire



	Convictions		Unsuccessful	
	Number of Defendants	%	Number of Defendants	%
A Homicide	5	100.0%	0	0.0%
B Offences Against The Person	154	84.6%	28	15.4%
C Sexual Offences	9	56.3%	7	43.8%
D Burglary	40	97.6%	1	2.4%
E Robbery	9	81.8%	2	18.2%
F Theft And Handling	150	92.0%	13	8.0%
G Fraud And Forgery	13	92.9%	1	7.1%
H Criminal Damage	37	86.0%	6	14.0%
I Drugs Offences	55	100.0%	0	0.0%
J Public Order Offences	78	94.0%	5	6.0%
K All Other Offences (excluding Motoring)	36	87.8%	5	12.2%
L Motoring Offences	377	82.1%	82	17.9%
Admin Finalisations	0	0.0%	24	100.0%
TOTAL	963	84.7%	174	15.3%