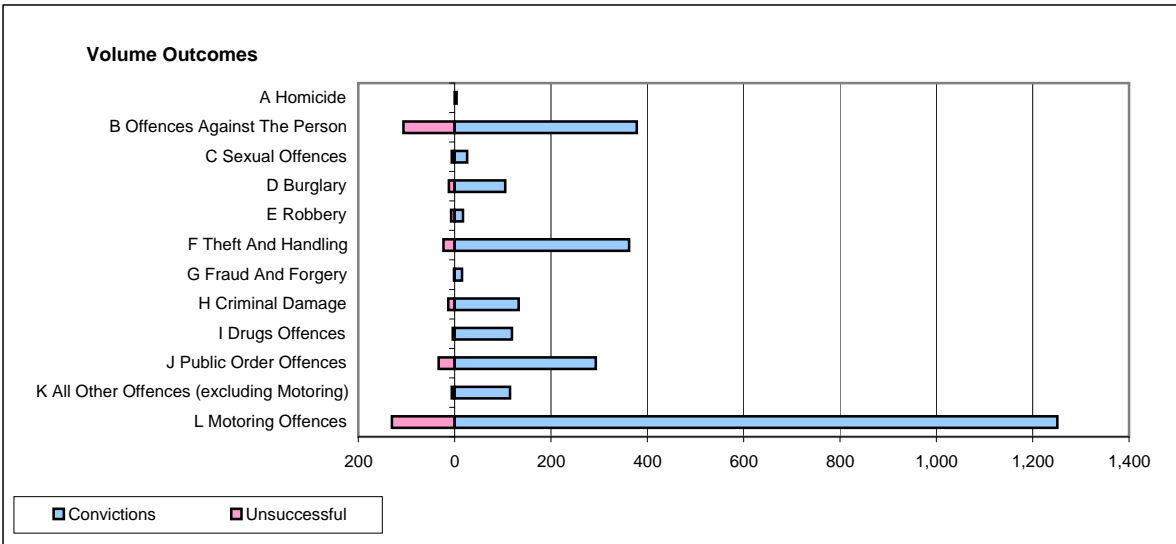
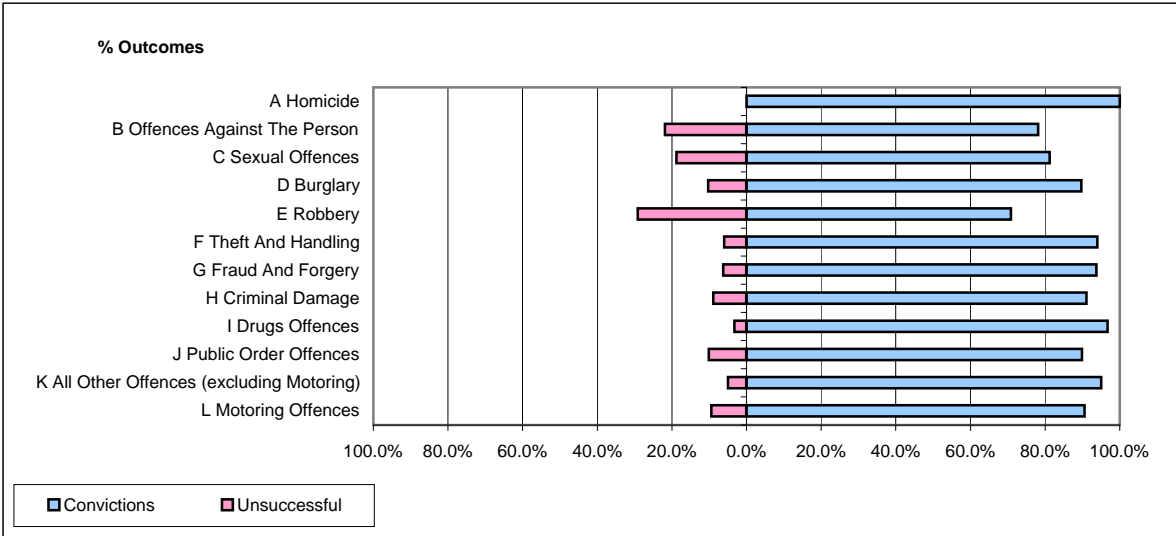


**CPS OUTCOMES BY PRINCIPAL OFFENCE CATEGORY**

**November 2008**

**P21-Lancashire**



	Convictions		Unsuccessful	
	Number of Defendants	%	Number of Defendants	%
<b>A Homicide</b>	<b>4</b>	<b>100.0%</b>	<b>0</b>	<b>0.0%</b>
<b>B Offences Against The Person</b>	<b>378</b>	<b>78.1%</b>	<b>106</b>	<b>21.9%</b>
<b>C Sexual Offences</b>	<b>26</b>	<b>81.3%</b>	<b>6</b>	<b>18.8%</b>
<b>D Burglary</b>	<b>105</b>	<b>89.7%</b>	<b>12</b>	<b>10.3%</b>
<b>E Robbery</b>	<b>17</b>	<b>70.8%</b>	<b>7</b>	<b>29.2%</b>
<b>F Theft And Handling</b>	<b>362</b>	<b>94.0%</b>	<b>23</b>	<b>6.0%</b>
<b>G Fraud And Forgery</b>	<b>15</b>	<b>93.8%</b>	<b>1</b>	<b>6.3%</b>
<b>H Criminal Damage</b>	<b>133</b>	<b>91.1%</b>	<b>13</b>	<b>8.9%</b>
<b>I Drugs Offences</b>	<b>119</b>	<b>96.7%</b>	<b>4</b>	<b>3.3%</b>
<b>J Public Order Offences</b>	<b>293</b>	<b>89.9%</b>	<b>33</b>	<b>10.1%</b>
<b>K All Other Offences (excluding Motoring)</b>	<b>115</b>	<b>95.0%</b>	<b>6</b>	<b>5.0%</b>
<b>L Motoring Offences</b>	<b>1,251</b>	<b>90.6%</b>	<b>130</b>	<b>9.4%</b>
<b>Admin Finalisations</b>	<b>0</b>	<b>0.0%</b>	<b>22</b>	<b>100.0%</b>
<b>TOTAL</b>	<b>2,818</b>	<b>88.6%</b>	<b>363</b>	<b>11.4%</b>