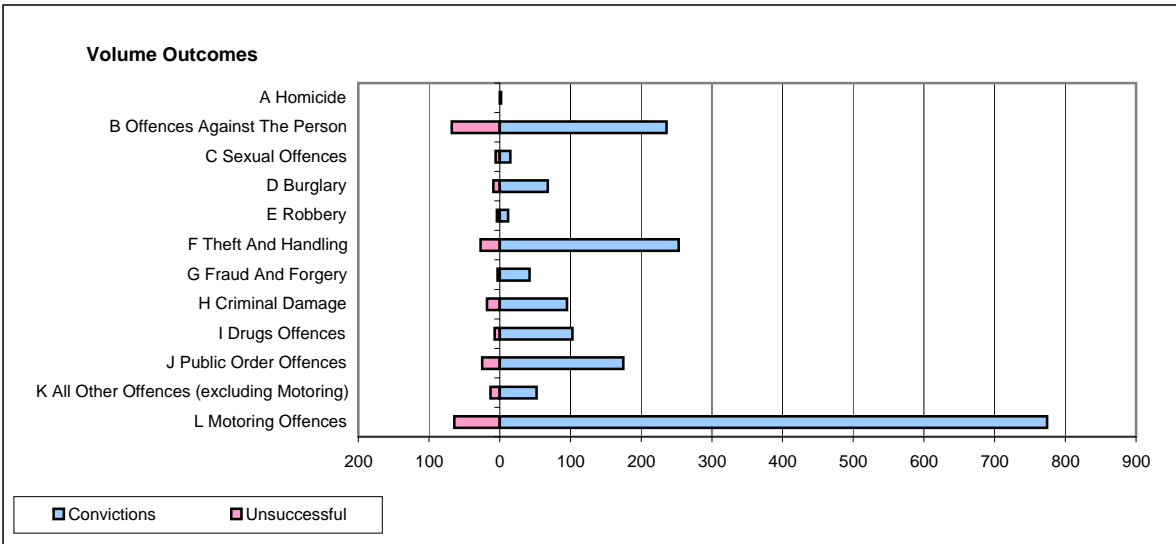
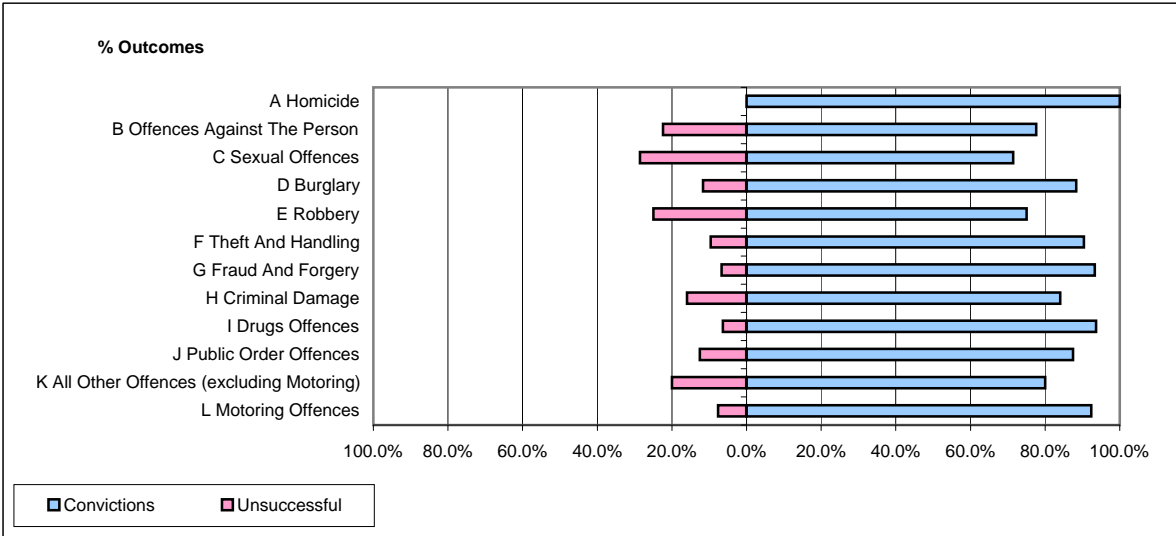


CPS OUTCOMES BY PRINCIPAL OFFENCE CATEGORY

November 2008

P20-Kent



	Convictions		Unsuccessful	
	Number of Defendants	%	Number of Defendants	%
A Homicide	2	100.0%	0	0.0%
B Offences Against The Person	236	77.6%	68	22.4%
C Sexual Offences	15	71.4%	6	28.6%
D Burglary	68	88.3%	9	11.7%
E Robbery	12	75.0%	4	25.0%
F Theft And Handling	253	90.4%	27	9.6%
G Fraud And Forgery	42	93.3%	3	6.7%
H Criminal Damage	95	84.1%	18	15.9%
I Drugs Offences	103	93.6%	7	6.4%
J Public Order Offences	175	87.5%	25	12.5%
K All Other Offences (excluding Motoring)	52	80.0%	13	20.0%
L Motoring Offences	774	92.4%	64	7.6%
Admin Finalisations	0	0.0%	26	100.0%
TOTAL	1,827	87.1%	270	12.9%