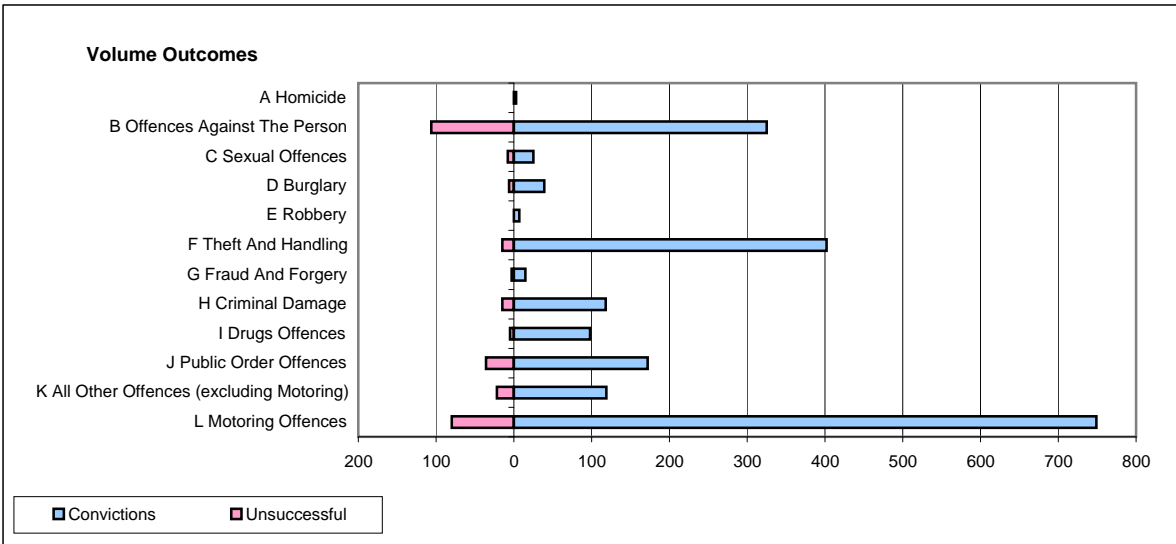
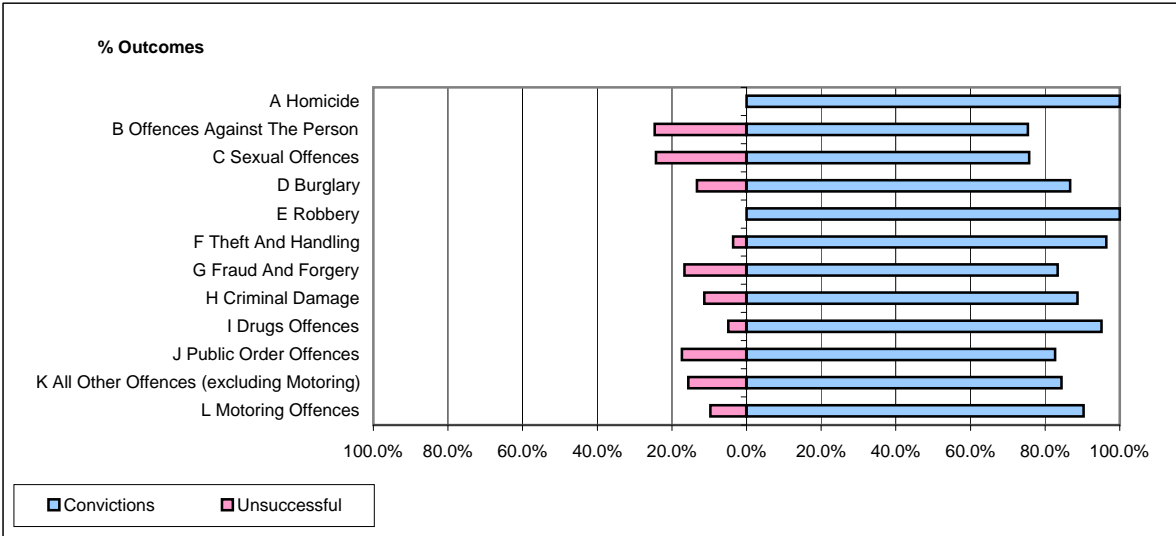


**CPS OUTCOMES BY PRINCIPAL OFFENCE CATEGORY**

**November 2008**

**P17-Hampshire**



	Convictions		Unsuccessful	
	Number of Defendants	%	Number of Defendants	%
<b>A Homicide</b>	<b>3</b>	<b>100.0%</b>	<b>0</b>	<b>0.0%</b>
<b>B Offences Against The Person</b>	<b>325</b>	<b>75.4%</b>	<b>106</b>	<b>24.6%</b>
<b>C Sexual Offences</b>	<b>25</b>	<b>75.8%</b>	<b>8</b>	<b>24.2%</b>
<b>D Burglary</b>	<b>39</b>	<b>86.7%</b>	<b>6</b>	<b>13.3%</b>
<b>E Robbery</b>	<b>7</b>	<b>100.0%</b>	<b>0</b>	<b>0.0%</b>
<b>F Theft And Handling</b>	<b>402</b>	<b>96.4%</b>	<b>15</b>	<b>3.6%</b>
<b>G Fraud And Forgery</b>	<b>15</b>	<b>83.3%</b>	<b>3</b>	<b>16.7%</b>
<b>H Criminal Damage</b>	<b>118</b>	<b>88.7%</b>	<b>15</b>	<b>11.3%</b>
<b>I Drugs Offences</b>	<b>98</b>	<b>95.1%</b>	<b>5</b>	<b>4.9%</b>
<b>J Public Order Offences</b>	<b>172</b>	<b>82.7%</b>	<b>36</b>	<b>17.3%</b>
<b>K All Other Offences (excluding Motoring)</b>	<b>119</b>	<b>84.4%</b>	<b>22</b>	<b>15.6%</b>
<b>L Motoring Offences</b>	<b>749</b>	<b>90.3%</b>	<b>80</b>	<b>9.7%</b>
<b>Admin Finalisations</b>	<b>0</b>	<b>0.0%</b>	<b>22</b>	<b>100.0%</b>
<b>TOTAL</b>	<b>2,072</b>	<b>86.7%</b>	<b>318</b>	<b>13.3%</b>