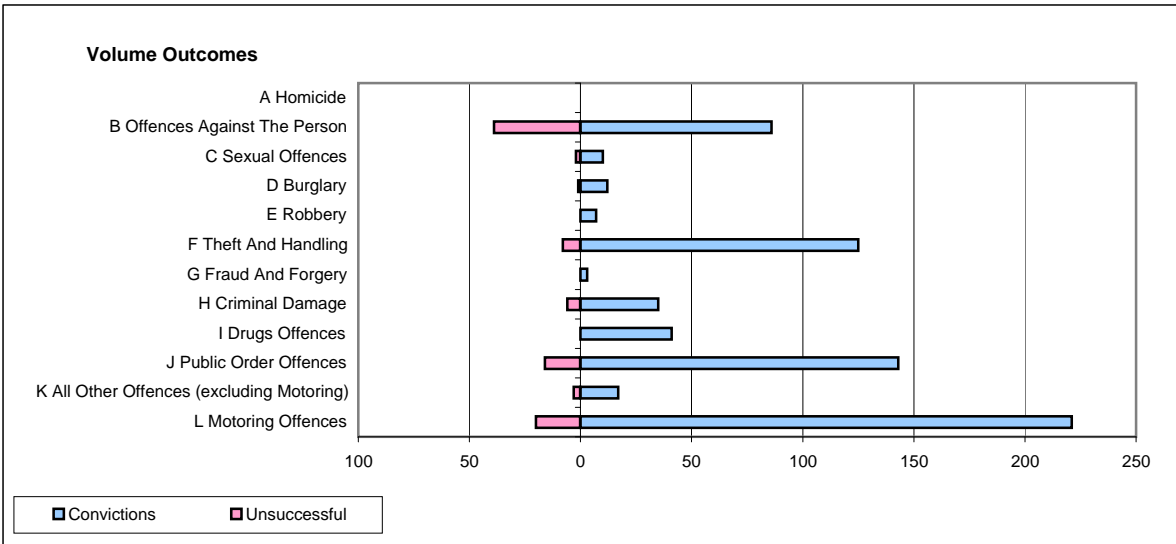
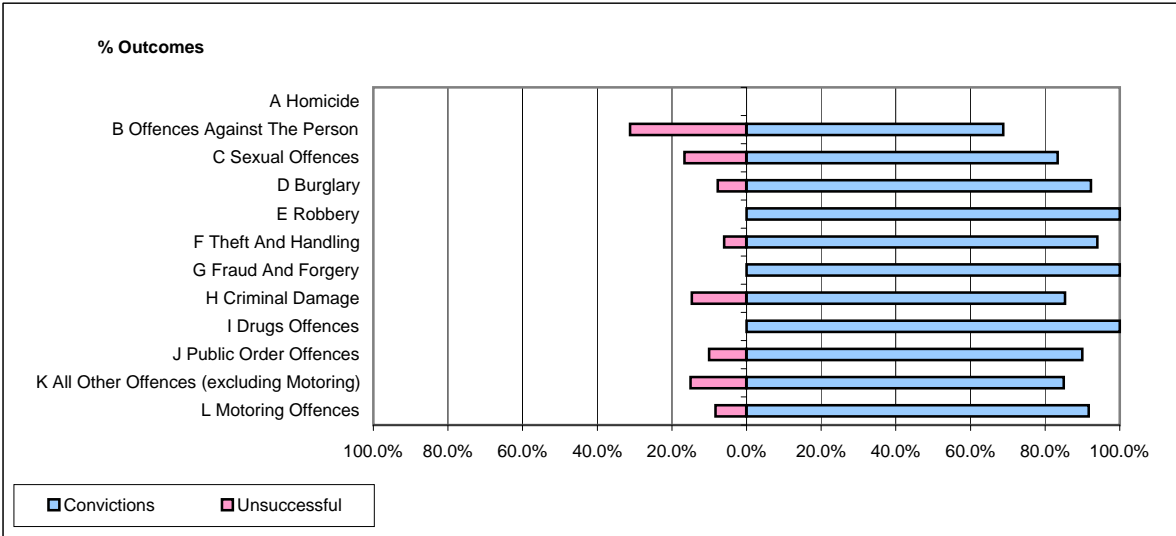


CPS OUTCOMES BY PRINCIPAL OFFENCE CATEGORY

November 2008

P16-Gwent



	Convictions		Unsuccessful	
	Number of Defendants	%	Number of Defendants	%
A Homicide	0	0	0	0
B Offences Against The Person	86	68.8%	39	31.2%
C Sexual Offences	10	83.3%	2	16.7%
D Burglary	12	92.3%	1	7.7%
E Robbery	7	100.0%	0	0.0%
F Theft And Handling	125	94.0%	8	6.0%
G Fraud And Forgery	3	100.0%	0	0.0%
H Criminal Damage	35	85.4%	6	14.6%
I Drugs Offences	41	100.0%	0	0.0%
J Public Order Offences	143	89.9%	16	10.1%
K All Other Offences (excluding Motoring)	17	85.0%	3	15.0%
L Motoring Offences	221	91.7%	20	8.3%
Admin Finalisations	0	0.0%	2	100.0%
TOTAL	700	87.8%	97	12.2%