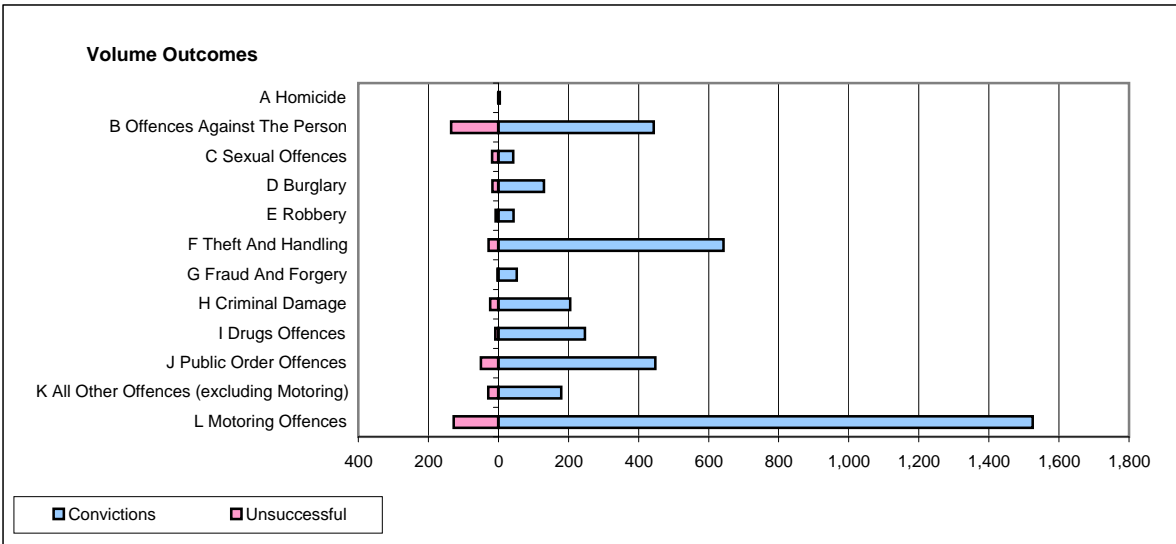
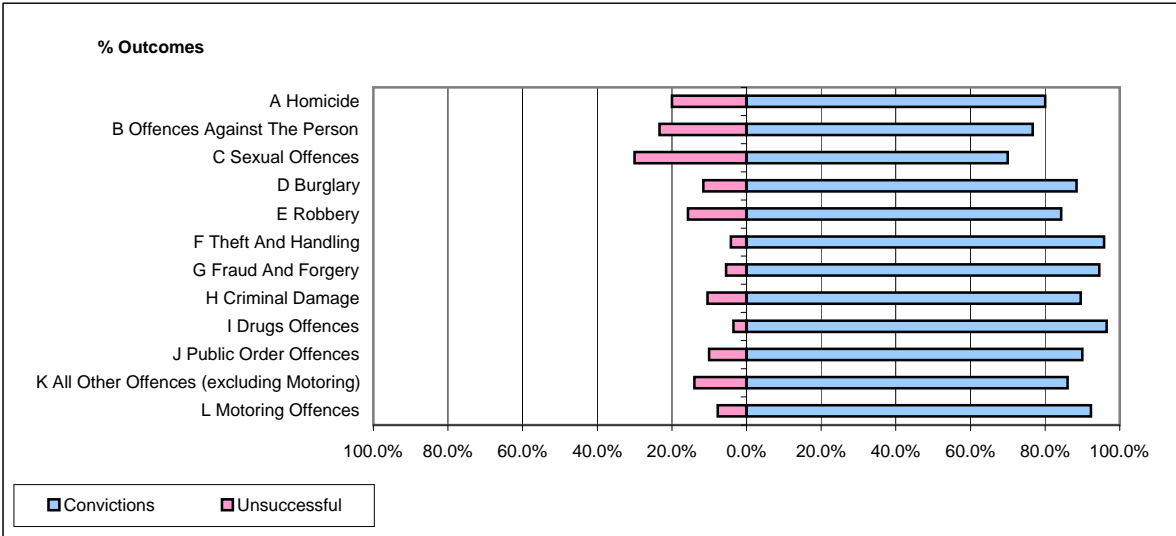


CPS OUTCOMES BY PRINCIPAL OFFENCE CATEGORY

November 2008

P15-GreaterManchester



	Convictions		Unsuccessful	
	Number of Defendants	%	Number of Defendants	%
A Homicide	4	80.0%	1	20.0%
B Offences Against The Person	443	76.6%	135	23.4%
C Sexual Offences	42	70.0%	18	30.0%
D Burglary	130	88.4%	17	11.6%
E Robbery	43	84.3%	8	15.7%
F Theft And Handling	642	95.8%	28	4.2%
G Fraud And Forgery	52	94.5%	3	5.5%
H Criminal Damage	205	89.5%	24	10.5%
I Drugs Offences	247	96.5%	9	3.5%
J Public Order Offences	448	90.0%	50	10.0%
K All Other Offences (excluding Motoring)	179	86.1%	29	13.9%
L Motoring Offences	1,525	92.3%	128	7.7%
Admin Finalisations	0	0.0%	78	100.0%
TOTAL	3,960	88.2%	528	11.8%