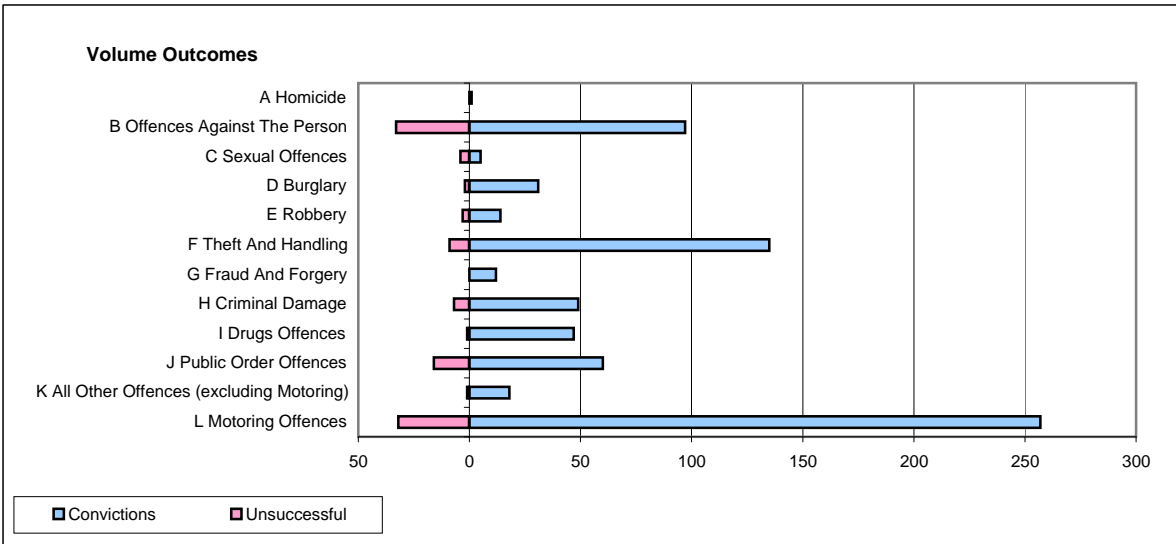
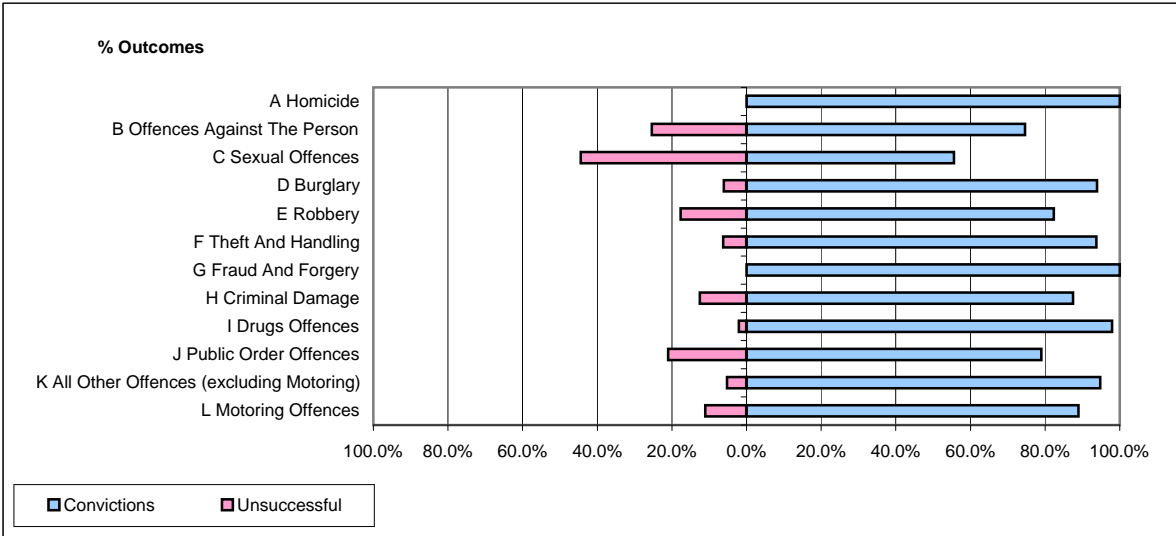


CPS OUTCOMES BY PRINCIPAL OFFENCE CATEGORY

November 2008

P14-Gloucestershire



| | Convictions | | Unsuccessful | |
|--|----------------------|---------------|----------------------|---------------|
| | Number of Defendants | % | Number of Defendants | % |
| A Homicide | 1 | 100.0% | 0 | 0.0% |
| B Offences Against The Person | 97 | 74.6% | 33 | 25.4% |
| C Sexual Offences | 5 | 55.6% | 4 | 44.4% |
| D Burglary | 31 | 93.9% | 2 | 6.1% |
| E Robbery | 14 | 82.4% | 3 | 17.6% |
| F Theft And Handling | 135 | 93.8% | 9 | 6.3% |
| G Fraud And Forgery | 12 | 100.0% | 0 | 0.0% |
| H Criminal Damage | 49 | 87.5% | 7 | 12.5% |
| I Drugs Offences | 47 | 97.9% | 1 | 2.1% |
| J Public Order Offences | 60 | 78.9% | 16 | 21.1% |
| K All Other Offences (excluding Motoring) | 18 | 94.7% | 1 | 5.3% |
| L Motoring Offences | 257 | 88.9% | 32 | 11.1% |
| Admin Finalisations | 0 | 0.0% | 4 | 100.0% |
| TOTAL | 726 | 86.6% | 112 | 13.4% |