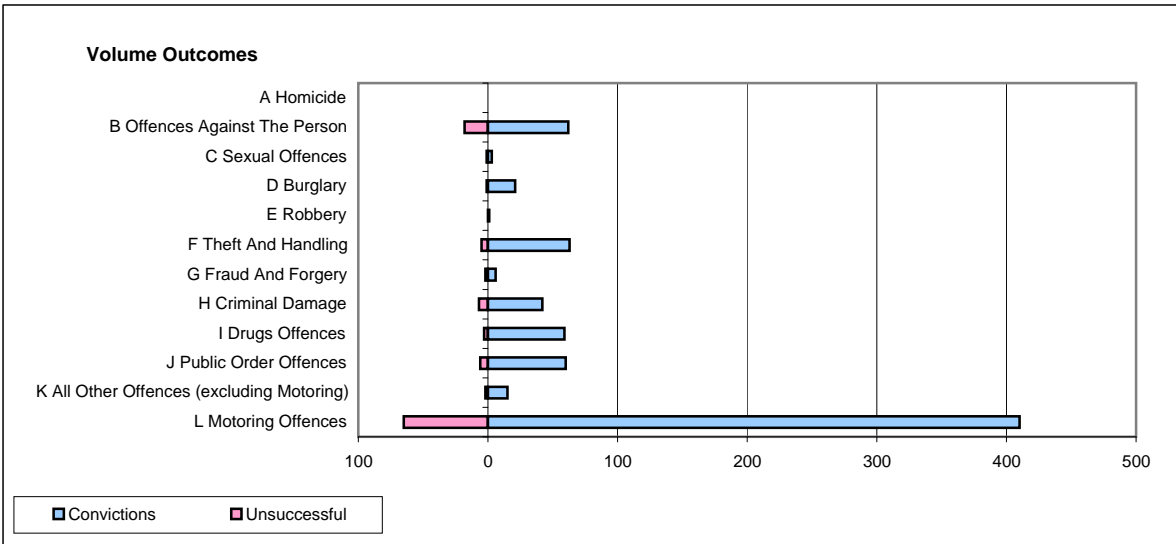
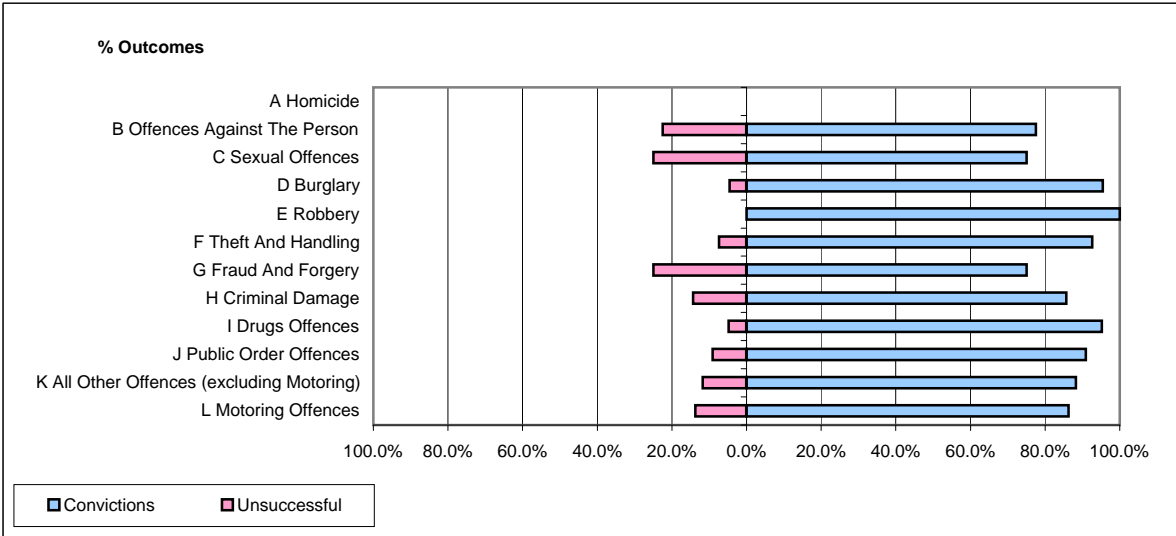


**CPS OUTCOMES BY PRINCIPAL OFFENCE CATEGORY**

**November 2008**

**P12-DyfedPowys**



	Convictions		Unsuccessful	
	Number of Defendants	%	Number of Defendants	%
<b>A Homicide</b>	<b>0</b>	<b>0</b>	<b>0</b>	<b>0</b>
<b>B Offences Against The Person</b>	<b>62</b>	<b>77.5%</b>	<b>18</b>	<b>22.5%</b>
<b>C Sexual Offences</b>	<b>3</b>	<b>75.0%</b>	<b>1</b>	<b>25.0%</b>
<b>D Burglary</b>	<b>21</b>	<b>95.5%</b>	<b>1</b>	<b>4.5%</b>
<b>E Robbery</b>	<b>1</b>	<b>100.0%</b>	<b>0</b>	<b>0.0%</b>
<b>F Theft And Handling</b>	<b>63</b>	<b>92.6%</b>	<b>5</b>	<b>7.4%</b>
<b>G Fraud And Forgery</b>	<b>6</b>	<b>75.0%</b>	<b>2</b>	<b>25.0%</b>
<b>H Criminal Damage</b>	<b>42</b>	<b>85.7%</b>	<b>7</b>	<b>14.3%</b>
<b>I Drugs Offences</b>	<b>59</b>	<b>95.2%</b>	<b>3</b>	<b>4.8%</b>
<b>J Public Order Offences</b>	<b>60</b>	<b>90.9%</b>	<b>6</b>	<b>9.1%</b>
<b>K All Other Offences (excluding Motoring)</b>	<b>15</b>	<b>88.2%</b>	<b>2</b>	<b>11.8%</b>
<b>L Motoring Offences</b>	<b>410</b>	<b>86.3%</b>	<b>65</b>	<b>13.7%</b>
<b>Admin Finalisations</b>	<b>0</b>	<b>0.0%</b>	<b>5</b>	<b>100.0%</b>
<b>TOTAL</b>	<b>742</b>	<b>86.6%</b>	<b>115</b>	<b>13.4%</b>