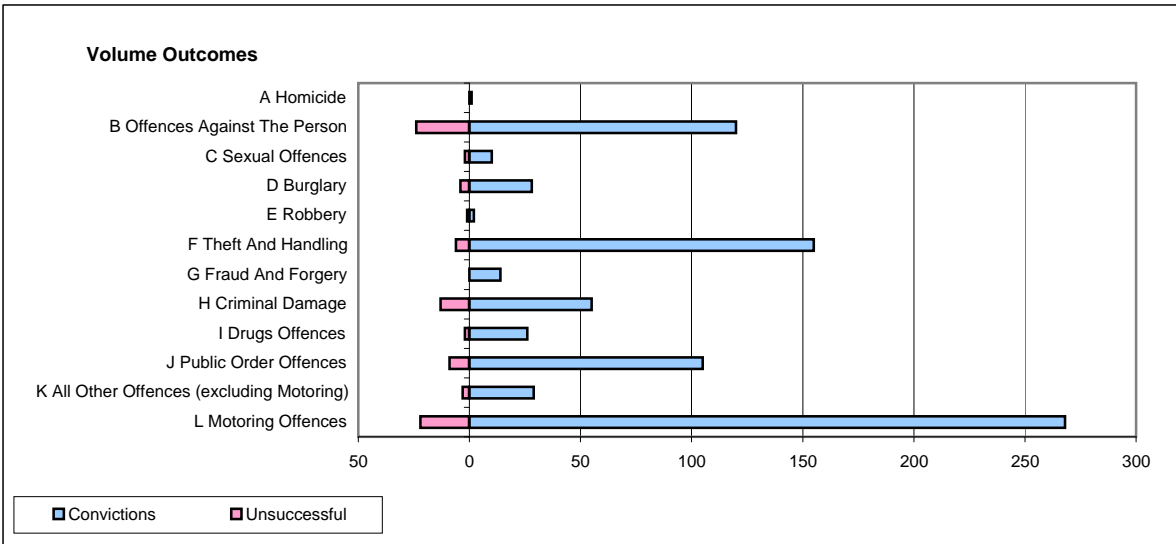
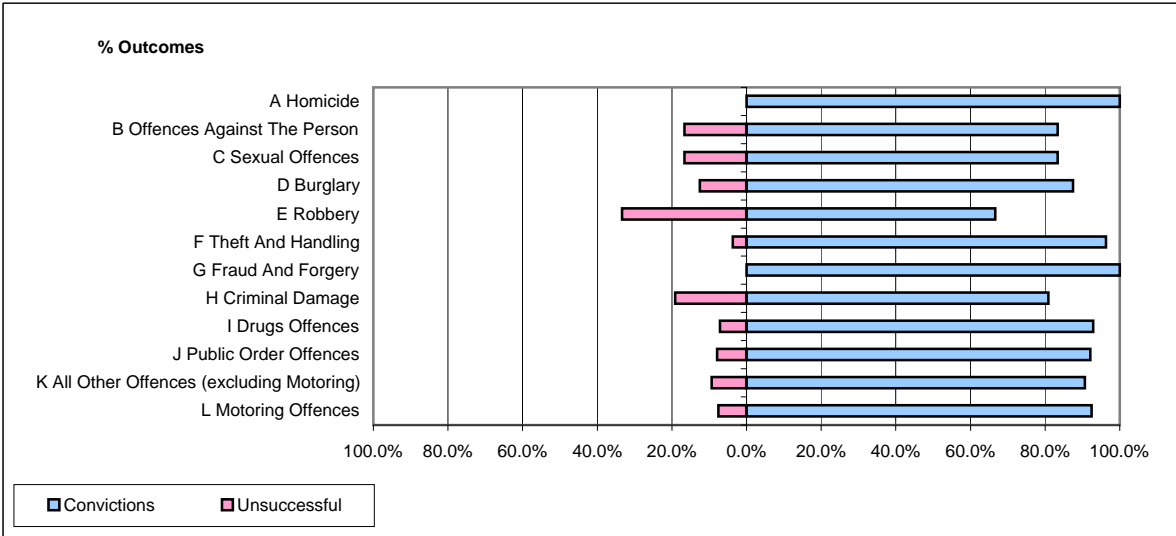


CPS OUTCOMES BY PRINCIPAL OFFENCE CATEGORY

November 2008

P11-Durham



	Convictions		Unsuccessful	
	Number of Defendants	%	Number of Defendants	%
A Homicide	1	100.0%	0	0.0%
B Offences Against The Person	120	83.3%	24	16.7%
C Sexual Offences	10	83.3%	2	16.7%
D Burglary	28	87.5%	4	12.5%
E Robbery	2	66.7%	1	33.3%
F Theft And Handling	155	96.3%	6	3.7%
G Fraud And Forgery	14	100.0%	0	0.0%
H Criminal Damage	55	80.9%	13	19.1%
I Drugs Offences	26	92.9%	2	7.1%
J Public Order Offences	105	92.1%	9	7.9%
K All Other Offences (excluding Motoring)	29	90.6%	3	9.4%
L Motoring Offences	268	92.4%	22	7.6%
Admin Finalisations	0	0.0%	7	100.0%
TOTAL	813	89.7%	93	10.3%