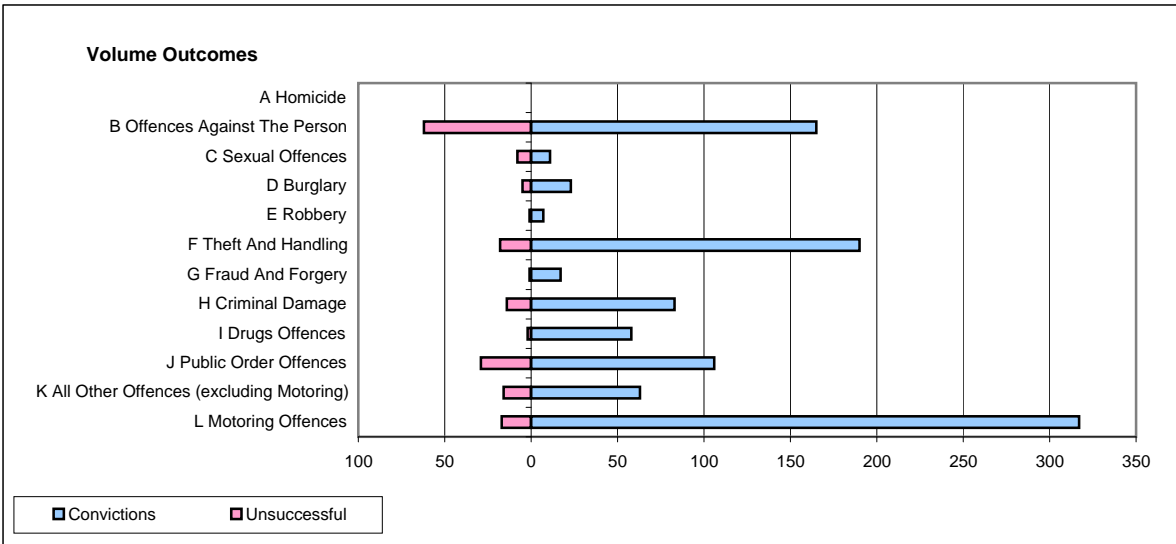
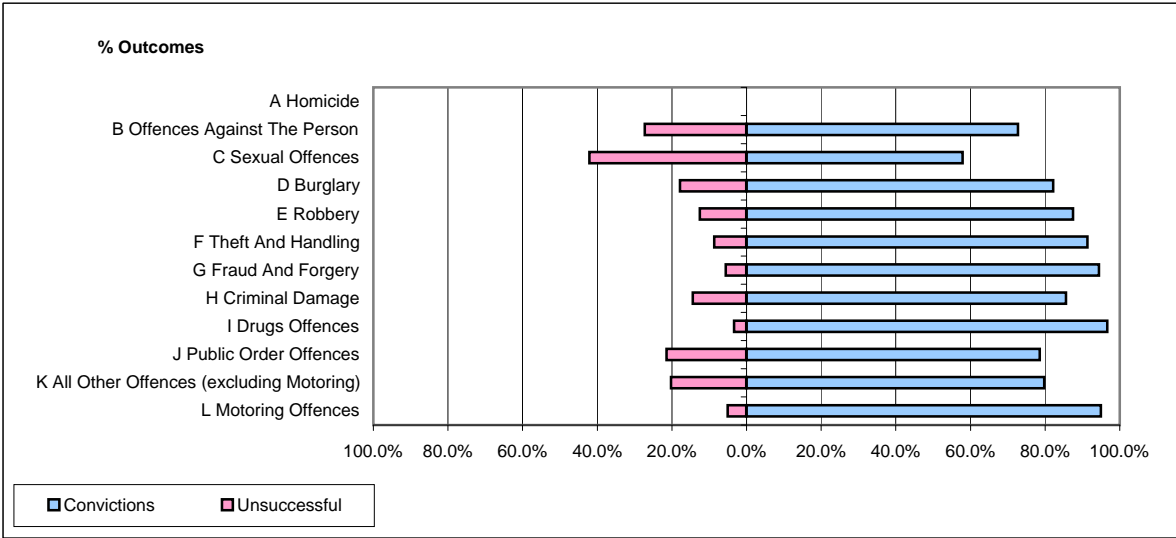


CPS OUTCOMES BY PRINCIPAL OFFENCE CATEGORY

November 2008

P08-Derbyshire



	Convictions		Unsuccessful	
	Number of Defendants	%	Number of Defendants	%
A Homicide	0	0	0	0
B Offences Against The Person	165	72.7%	62	27.3%
C Sexual Offences	11	57.9%	8	42.1%
D Burglary	23	82.1%	5	17.9%
E Robbery	7	87.5%	1	12.5%
F Theft And Handling	190	91.3%	18	8.7%
G Fraud And Forgery	17	94.4%	1	5.6%
H Criminal Damage	83	85.6%	14	14.4%
I Drugs Offences	58	96.7%	2	3.3%
J Public Order Offences	106	78.5%	29	21.5%
K All Other Offences (excluding Motoring)	63	79.7%	16	20.3%
L Motoring Offences	317	94.9%	17	5.1%
Admin Finalisations	0	0.0%	15	100.0%
TOTAL	1,040	84.7%	188	15.3%