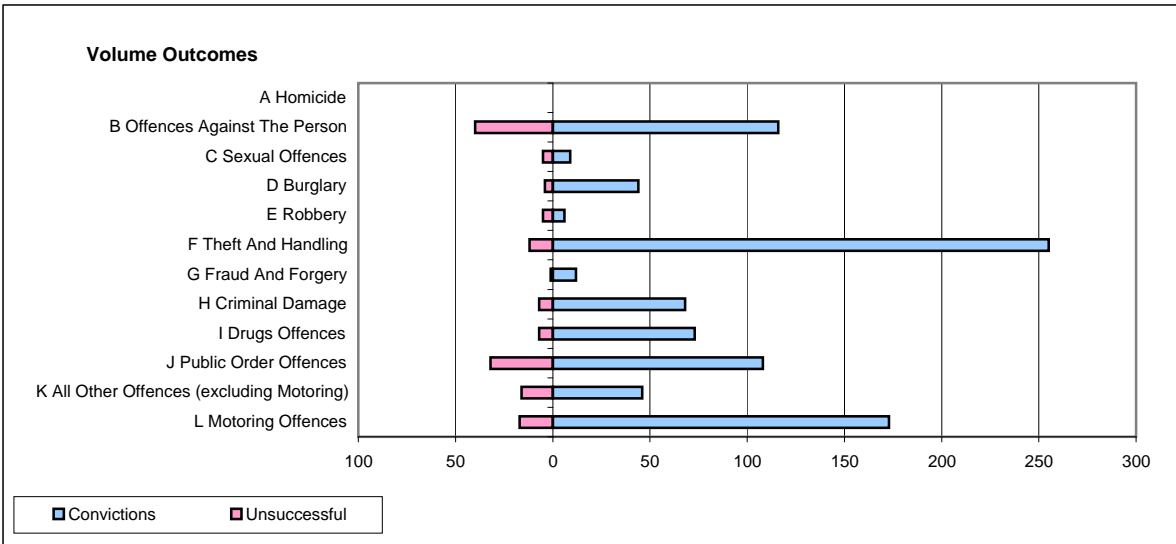
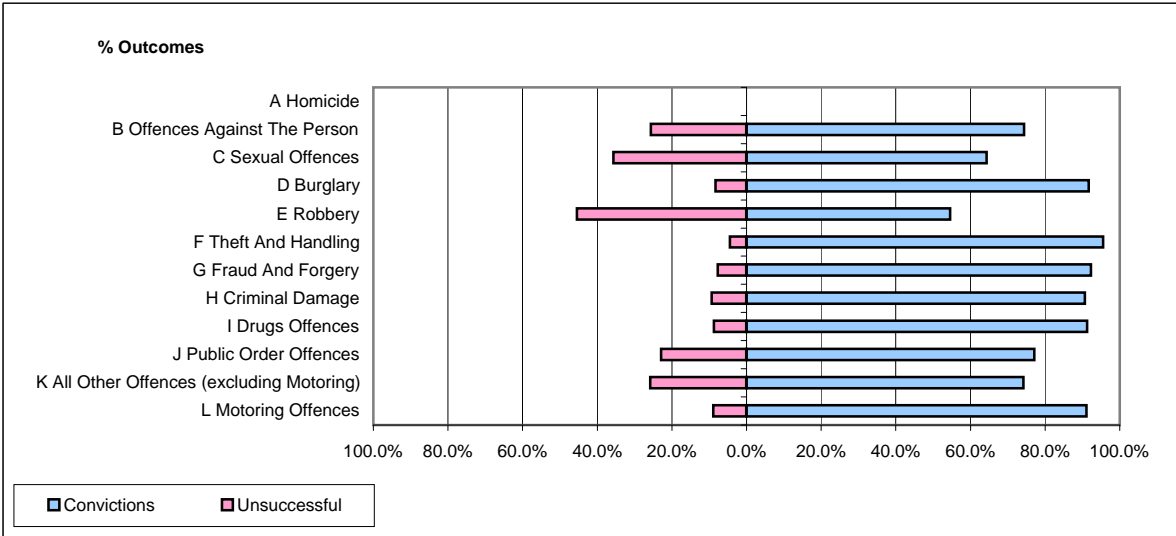


**CPS OUTCOMES BY PRINCIPAL OFFENCE CATEGORY**

**November 2008**

**P06-Cleveland**



	Convictions		Unsuccessful	
	Number of Defendants	%	Number of Defendants	%
<b>A Homicide</b>	<b>0</b>	<b>0</b>	<b>0</b>	<b>0</b>
<b>B Offences Against The Person</b>	<b>116</b>	<b>74.4%</b>	<b>40</b>	<b>25.6%</b>
<b>C Sexual Offences</b>	<b>9</b>	<b>64.3%</b>	<b>5</b>	<b>35.7%</b>
<b>D Burglary</b>	<b>44</b>	<b>91.7%</b>	<b>4</b>	<b>8.3%</b>
<b>E Robbery</b>	<b>6</b>	<b>54.5%</b>	<b>5</b>	<b>45.5%</b>
<b>F Theft And Handling</b>	<b>255</b>	<b>95.5%</b>	<b>12</b>	<b>4.5%</b>
<b>G Fraud And Forgery</b>	<b>12</b>	<b>92.3%</b>	<b>1</b>	<b>7.7%</b>
<b>H Criminal Damage</b>	<b>68</b>	<b>90.7%</b>	<b>7</b>	<b>9.3%</b>
<b>I Drugs Offences</b>	<b>73</b>	<b>91.3%</b>	<b>7</b>	<b>8.8%</b>
<b>J Public Order Offences</b>	<b>108</b>	<b>77.1%</b>	<b>32</b>	<b>22.9%</b>
<b>K All Other Offences (excluding Motoring)</b>	<b>46</b>	<b>74.2%</b>	<b>16</b>	<b>25.8%</b>
<b>L Motoring Offences</b>	<b>173</b>	<b>91.1%</b>	<b>17</b>	<b>8.9%</b>
<b>Admin Finalisations</b>	<b>0</b>	<b>0.0%</b>	<b>8</b>	<b>100.0%</b>
<b>TOTAL</b>	<b>910</b>	<b>85.5%</b>	<b>154</b>	<b>14.5%</b>