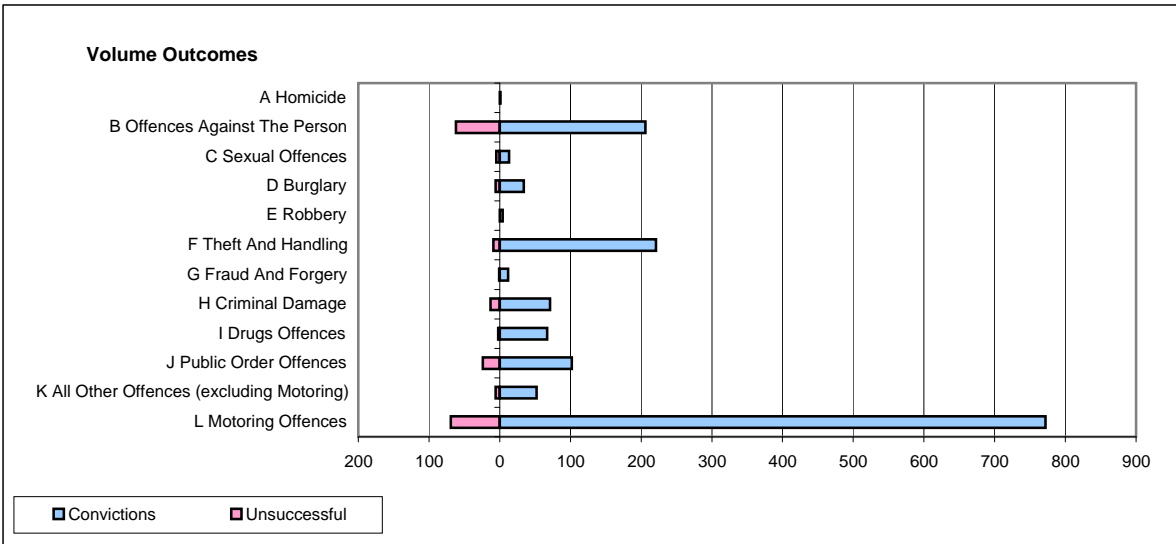
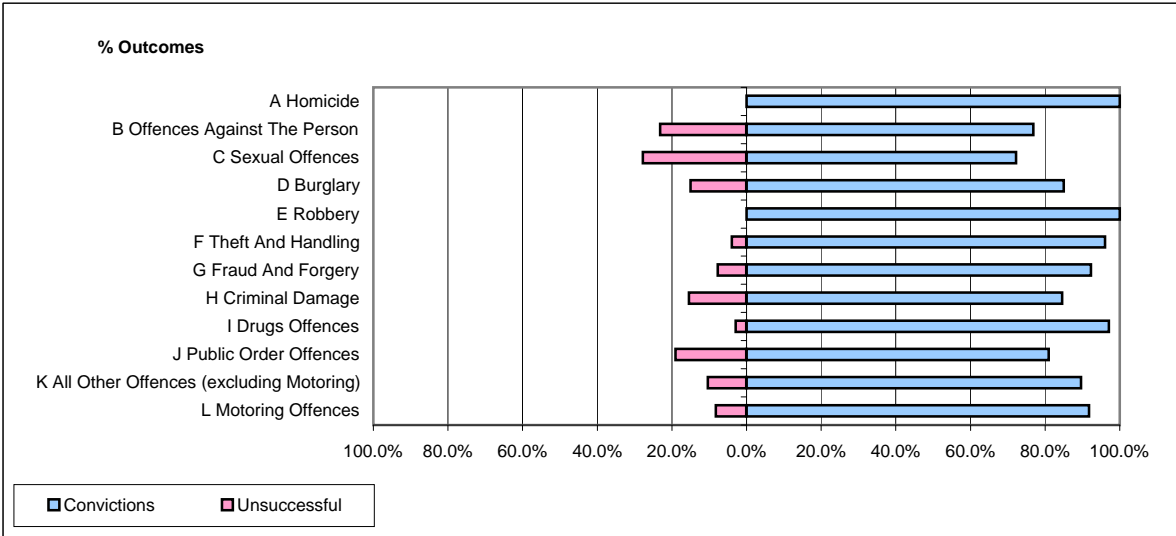


CPS OUTCOMES BY PRINCIPAL OFFENCE CATEGORY

November 2008

P04-Cheshire



	Convictions		Unsuccessful	
	Number of Defendants	%	Number of Defendants	%
A Homicide	1	100.0%	0	0.0%
B Offences Against The Person	206	76.9%	62	23.1%
C Sexual Offences	13	72.2%	5	27.8%
D Burglary	34	85.0%	6	15.0%
E Robbery	4	100.0%	0	0.0%
F Theft And Handling	221	96.1%	9	3.9%
G Fraud And Forgery	12	92.3%	1	7.7%
H Criminal Damage	71	84.5%	13	15.5%
I Drugs Offences	67	97.1%	2	2.9%
J Public Order Offences	102	81.0%	24	19.0%
K All Other Offences (excluding Motoring)	52	89.7%	6	10.3%
L Motoring Offences	772	91.8%	69	8.2%
Admin Finalisations	0	0.0%	21	100.0%
TOTAL	1,555	87.7%	218	12.3%