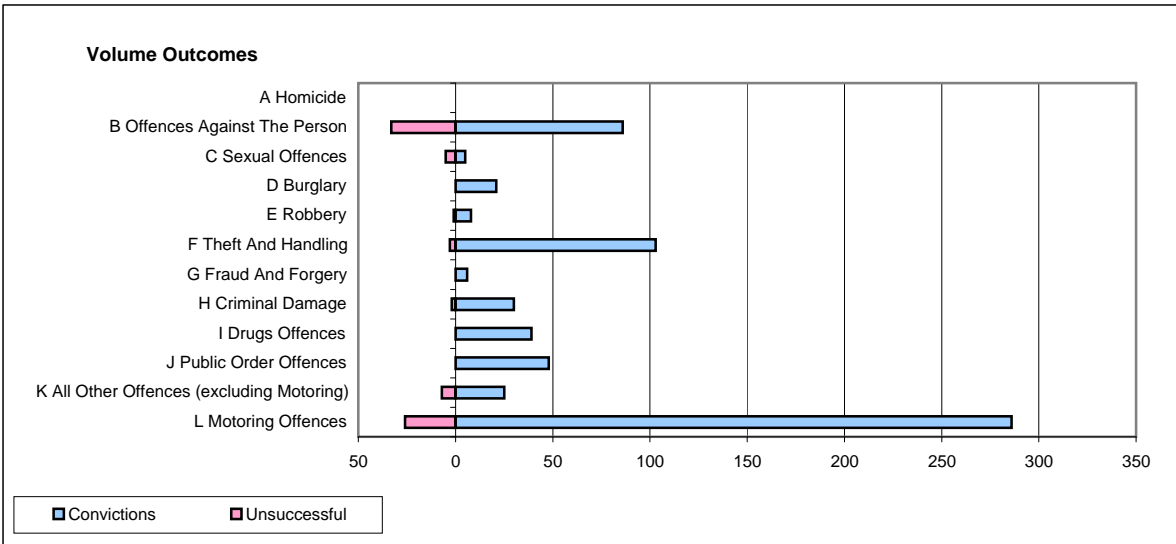
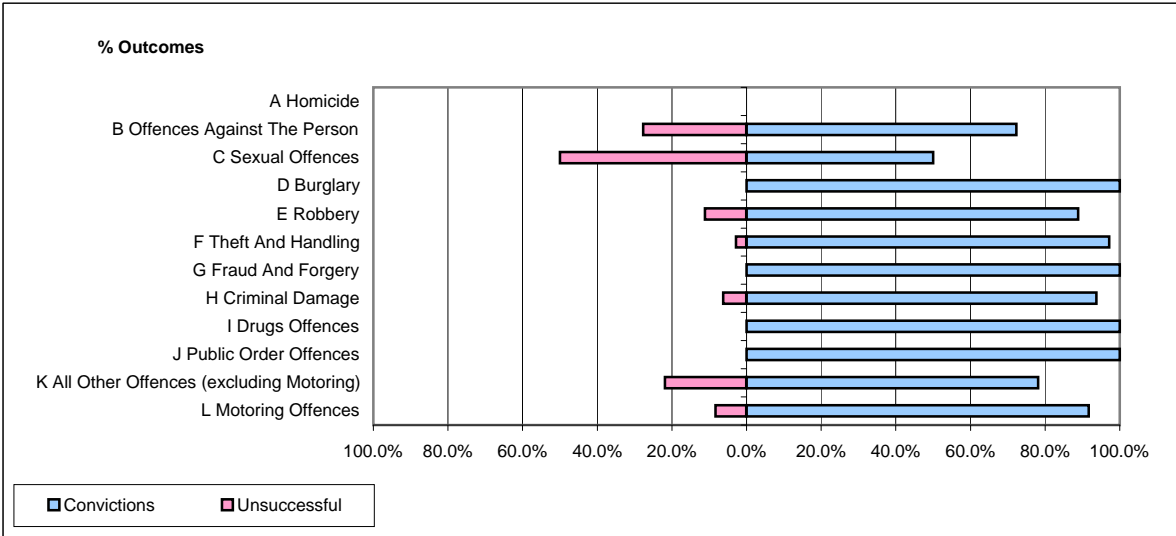


**CPS OUTCOMES BY PRINCIPAL OFFENCE CATEGORY**

**November 2008**

**P02-Bedfordshire**



	Convictions		Unsuccessful	
	Number of Defendants	%	Number of Defendants	%
<b>A Homicide</b>	<b>0</b>	<b>0</b>	<b>0</b>	<b>0</b>
<b>B Offences Against The Person</b>	<b>86</b>	<b>72.3%</b>	<b>33</b>	<b>27.7%</b>
<b>C Sexual Offences</b>	<b>5</b>	<b>50.0%</b>	<b>5</b>	<b>50.0%</b>
<b>D Burglary</b>	<b>21</b>	<b>100.0%</b>	<b>0</b>	<b>0.0%</b>
<b>E Robbery</b>	<b>8</b>	<b>88.9%</b>	<b>1</b>	<b>11.1%</b>
<b>F Theft And Handling</b>	<b>103</b>	<b>97.2%</b>	<b>3</b>	<b>2.8%</b>
<b>G Fraud And Forgery</b>	<b>6</b>	<b>100.0%</b>	<b>0</b>	<b>0.0%</b>
<b>H Criminal Damage</b>	<b>30</b>	<b>93.8%</b>	<b>2</b>	<b>6.3%</b>
<b>I Drugs Offences</b>	<b>39</b>	<b>100.0%</b>	<b>0</b>	<b>0.0%</b>
<b>J Public Order Offences</b>	<b>48</b>	<b>100.0%</b>	<b>0</b>	<b>0.0%</b>
<b>K All Other Offences (excluding Motoring)</b>	<b>25</b>	<b>78.1%</b>	<b>7</b>	<b>21.9%</b>
<b>L Motoring Offences</b>	<b>286</b>	<b>91.7%</b>	<b>26</b>	<b>8.3%</b>
<b>Admin Finalisations</b>	<b>0</b>	<b>0.0%</b>	<b>7</b>	<b>100.0%</b>
<b>TOTAL</b>	<b>657</b>	<b>88.7%</b>	<b>84</b>	<b>11.3%</b>