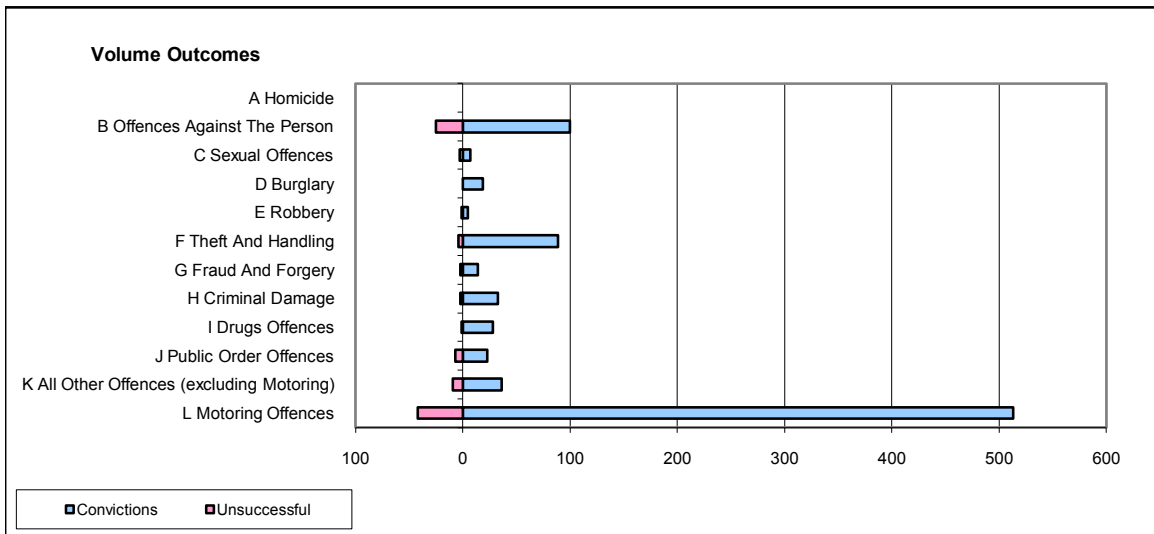
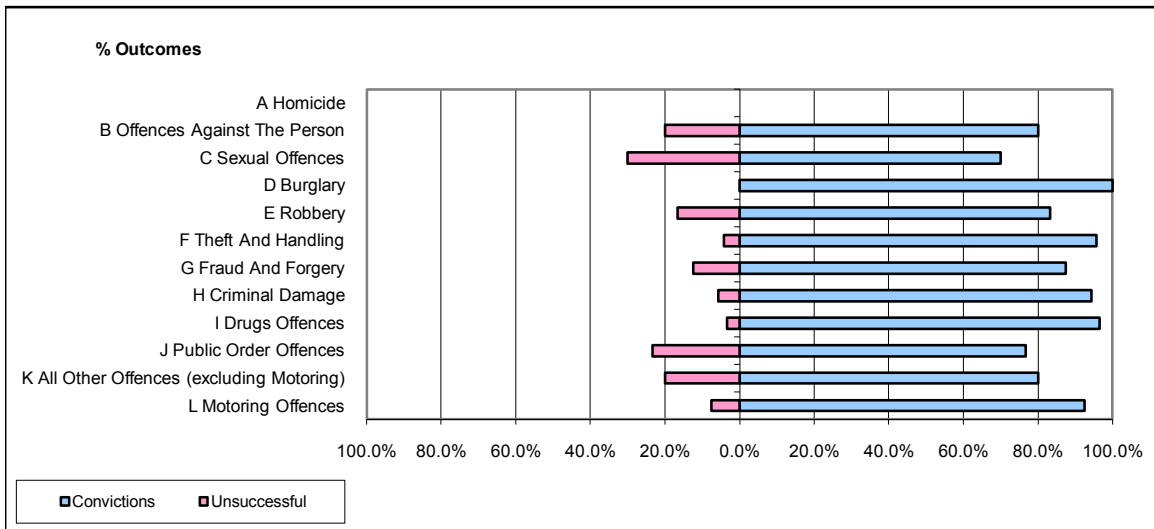


**CPS OUTCOMES BY PRINCIPAL OFFENCE CATEGORY**

**October 2008**

**P43-Wiltshire**



	Convictions		Unsuccessful	
	Number of Defendants	%	Number of Defendants	%
<b>A Homicide</b>	0	0	0	0
<b>B Offences Against The Person</b>	100	80.0%	25	20.0%
<b>C Sexual Offences</b>	7	70.0%	3	30.0%
<b>D Burglary</b>	19	100.0%	0	0.0%
<b>E Robbery</b>	5	83.3%	1	16.7%
<b>F Theft And Handling</b>	89	95.7%	4	4.3%
<b>G Fraud And Forgery</b>	14	87.5%	2	12.5%
<b>H Criminal Damage</b>	33	94.3%	2	5.7%
<b>I Drugs Offences</b>	28	96.6%	1	3.4%
<b>J Public Order Offences</b>	23	76.7%	7	23.3%
<b>K All Other Offences (excluding Motoring)</b>	36	80.0%	9	20.0%
<b>L Motoring Offences</b>	513	92.4%	42	7.6%
<b>Admin Finalisations</b>	0	0.0%	11	100.0%
<b>TOTAL</b>	<b>867</b>	<b>89.0%</b>	<b>107</b>	<b>11.0%</b>