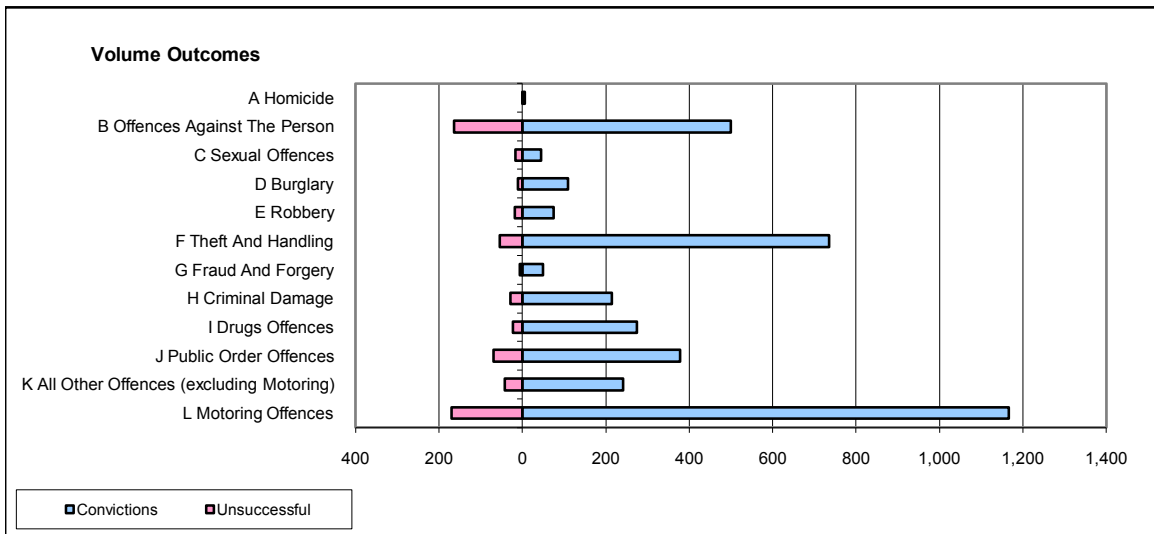
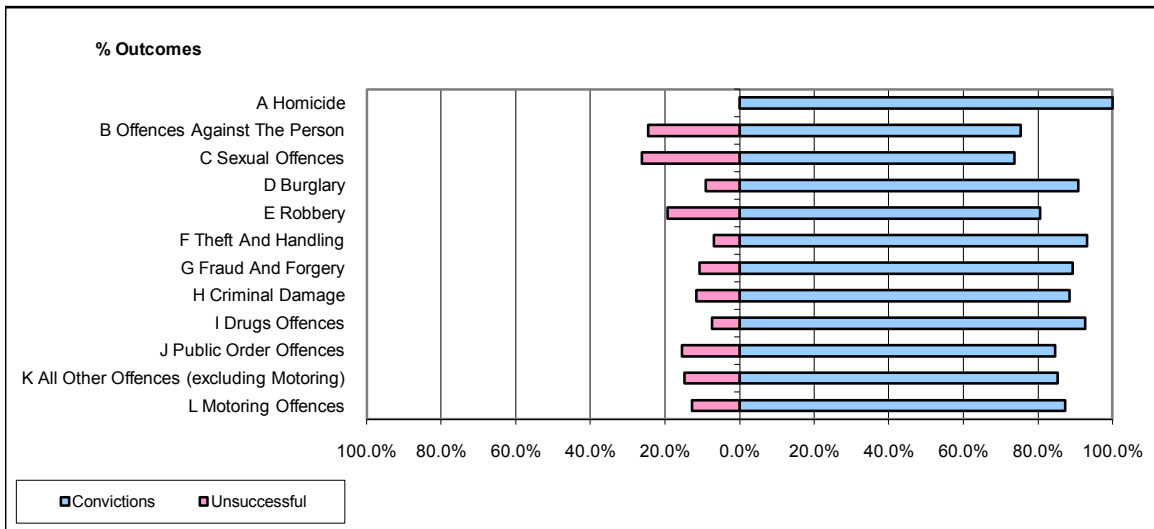


CPS OUTCOMES BY PRINCIPAL OFFENCE CATEGORY

October 2008

P41-WestMidlands



	Convictions		Unsuccessful	
	Number of Defendants	%	Number of Defendants	%
A Homicide	6	100.0%	0	0.0%
B Offences Against The Person	500	75.4%	163	24.6%
C Sexual Offences	45	73.8%	16	26.2%
D Burglary	109	90.8%	11	9.2%
E Robbery	75	80.6%	18	19.4%
F Theft And Handling	735	93.2%	54	6.8%
G Fraud And Forgery	50	89.3%	6	10.7%
H Criminal Damage	214	88.4%	28	11.6%
I Drugs Offences	275	92.6%	22	7.4%
J Public Order Offences	378	84.6%	69	15.4%
K All Other Offences (excluding Motoring)	242	85.2%	42	14.8%
L Motoring Offences	1,166	87.3%	170	12.7%
Admin Finalisations	0	0.0%	57	100.0%
TOTAL	3,795	85.3%	656	14.7%