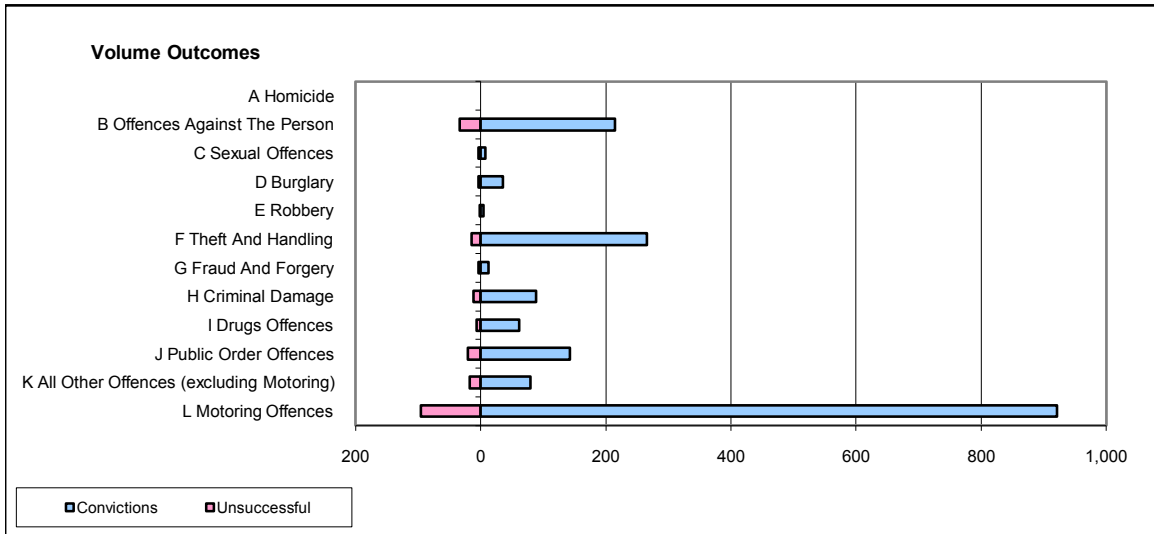
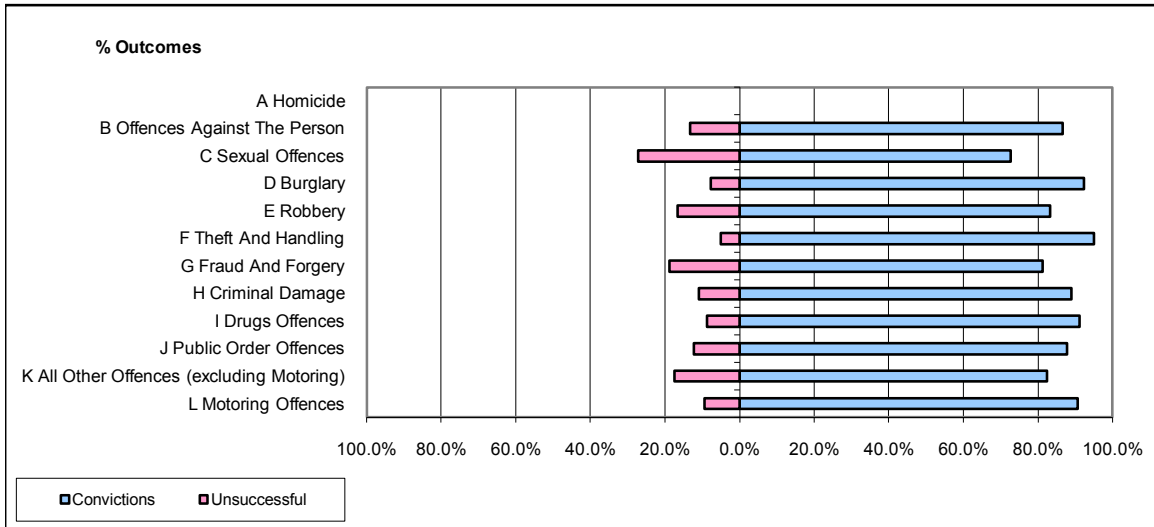


CPS OUTCOMES BY PRINCIPAL OFFENCE CATEGORY

October 2008

P40-WestMercia



	Convictions		Unsuccessful	
	Number of Defendants	%	Number of Defendants	%
A Homicide	0	0	0	0
B Offences Against The Person	215	86.7%	33	13.3%
C Sexual Offences	8	72.7%	3	27.3%
D Burglary	36	92.3%	3	7.7%
E Robbery	5	83.3%	1	16.7%
F Theft And Handling	266	95.0%	14	5.0%
G Fraud And Forgery	13	81.3%	3	18.8%
H Criminal Damage	89	89.0%	11	11.0%
I Drugs Offences	62	91.2%	6	8.8%
J Public Order Offences	143	87.7%	20	12.3%
K All Other Offences (excluding Motoring)	80	82.5%	17	17.5%
L Motoring Offences	921	90.6%	95	9.4%
Admin Finalisations	0	0.0%	19	100.0%
TOTAL	1,838	89.1%	225	10.9%