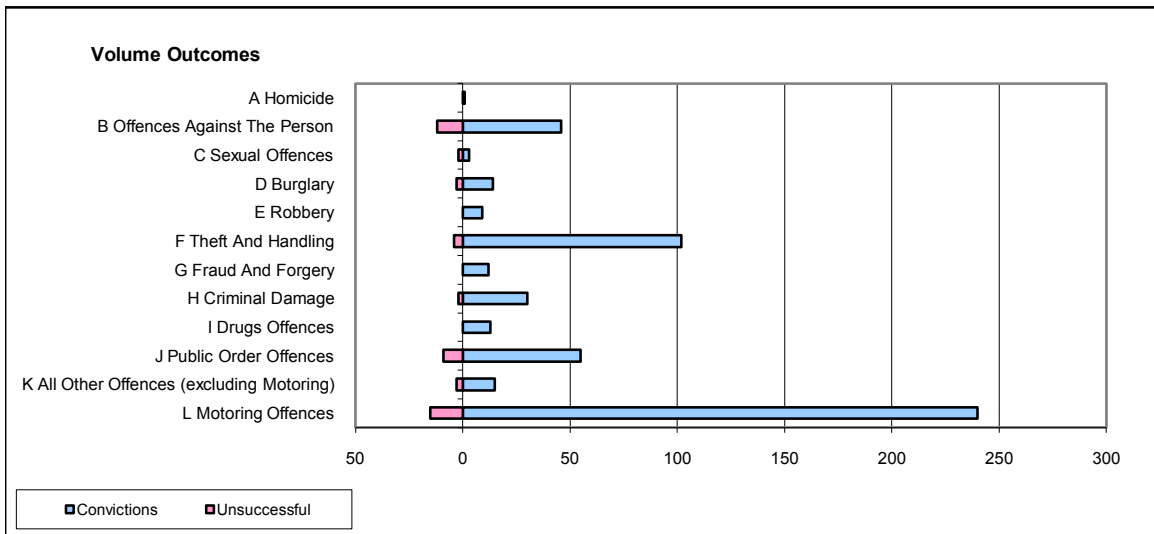
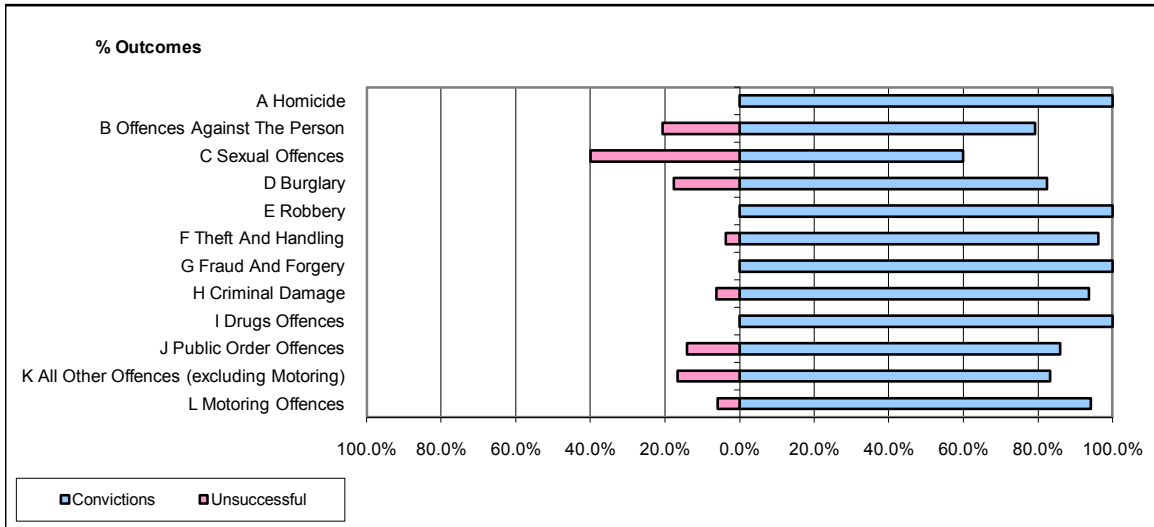


CPS OUTCOMES BY PRINCIPAL OFFENCE CATEGORY

October 2008

P39-Warwickshire



	Convictions		Unsuccessful	
	Number of Defendants	%	Number of Defendants	%
A Homicide	1	100.0%	0	0.0%
B Offences Against The Person	46	79.3%	12	20.7%
C Sexual Offences	3	60.0%	2	40.0%
D Burglary	14	82.4%	3	17.6%
E Robbery	9	100.0%	0	0.0%
F Theft And Handling	102	96.2%	4	3.8%
G Fraud And Forgery	12	100.0%	0	0.0%
H Criminal Damage	30	93.8%	2	6.3%
I Drugs Offences	13	100.0%	0	0.0%
J Public Order Offences	55	85.9%	9	14.1%
K All Other Offences (excluding Motoring)	15	83.3%	3	16.7%
L Motoring Offences	240	94.1%	15	5.9%
Admin Finalisations	0	0.0%	3	100.0%
TOTAL	540	91.1%	53	8.9%