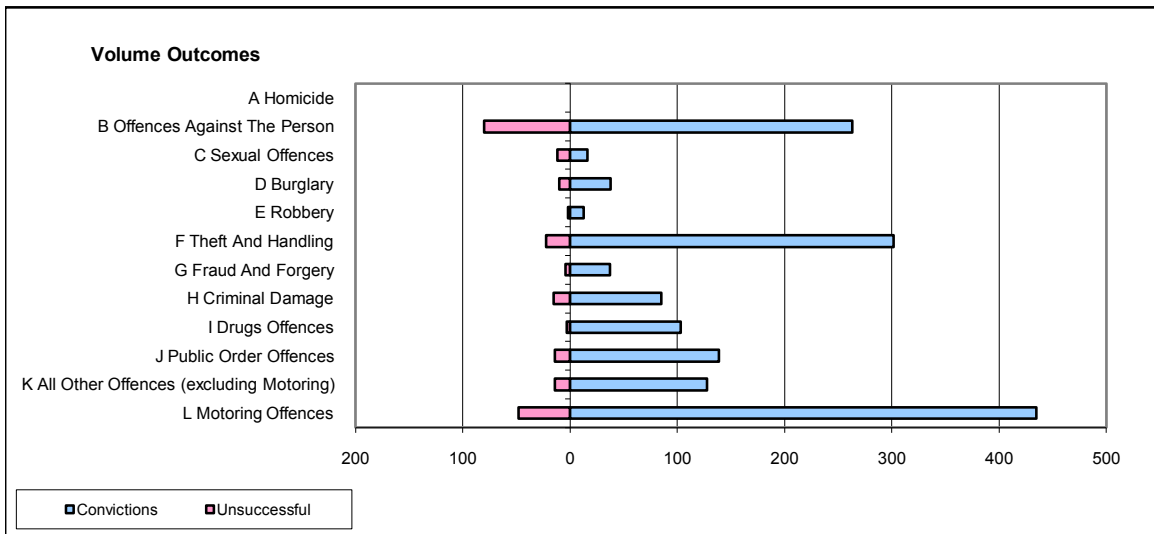
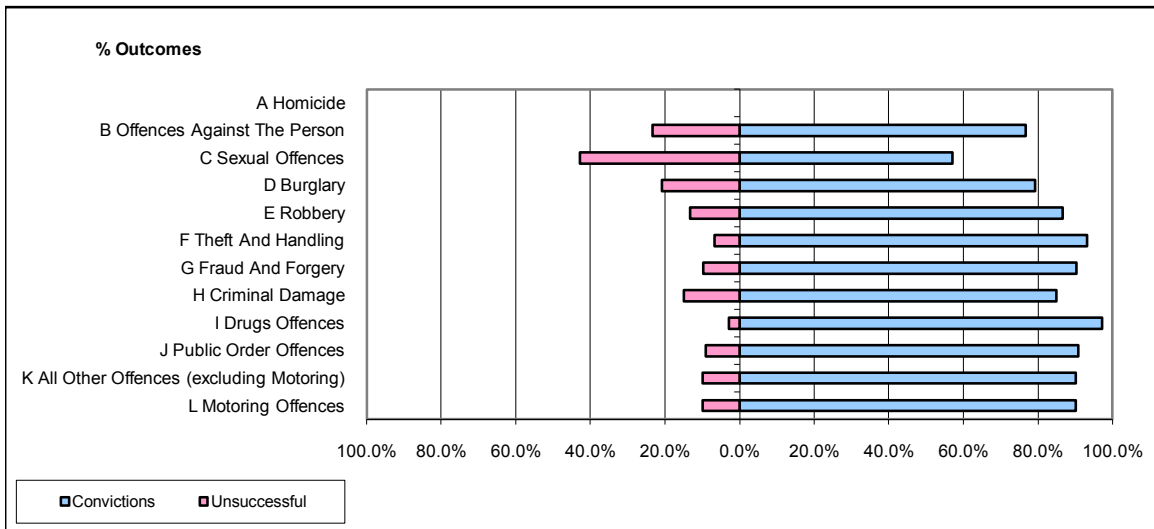


CPS OUTCOMES BY PRINCIPAL OFFENCE CATEGORY

October 2008

P37-Sussex



	Convictions		Unsuccessful	
	Number of Defendants	%	Number of Defendants	%
A Homicide	0	0	0	0
B Offences Against The Person	263	76.7%	80	23.3%
C Sexual Offences	16	57.1%	12	42.9%
D Burglary	38	79.2%	10	20.8%
E Robbery	13	86.7%	2	13.3%
F Theft And Handling	302	93.2%	22	6.8%
G Fraud And Forgery	37	90.2%	4	9.8%
H Criminal Damage	85	85.0%	15	15.0%
I Drugs Offences	103	97.2%	3	2.8%
J Public Order Offences	139	90.8%	14	9.2%
K All Other Offences (excluding Motoring)	128	90.1%	14	9.9%
L Motoring Offences	435	90.1%	48	9.9%
Admin Finalisations	0	0.0%	23	100.0%
TOTAL	1,559	86.3%	247	13.7%